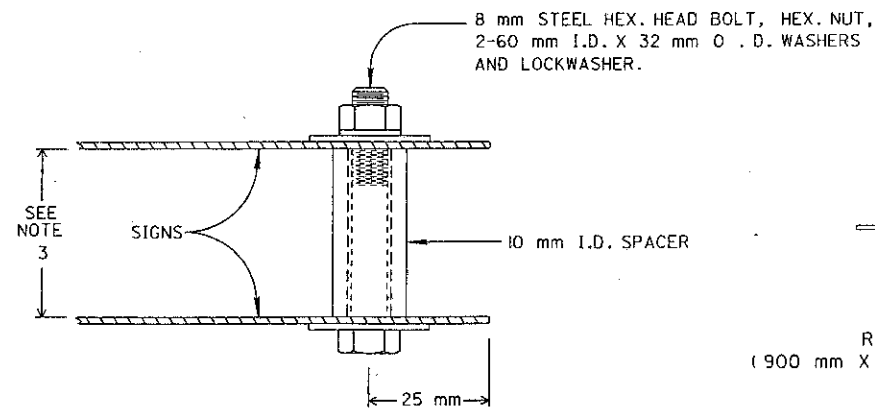
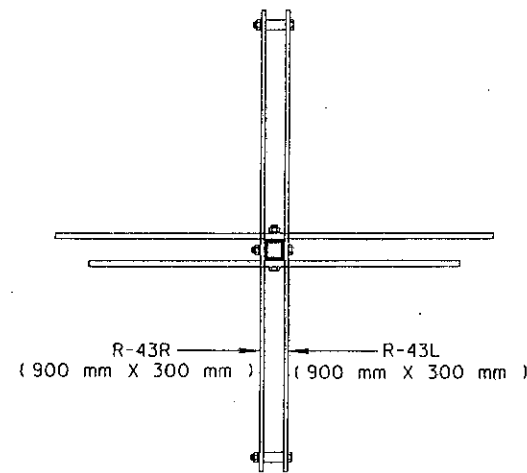
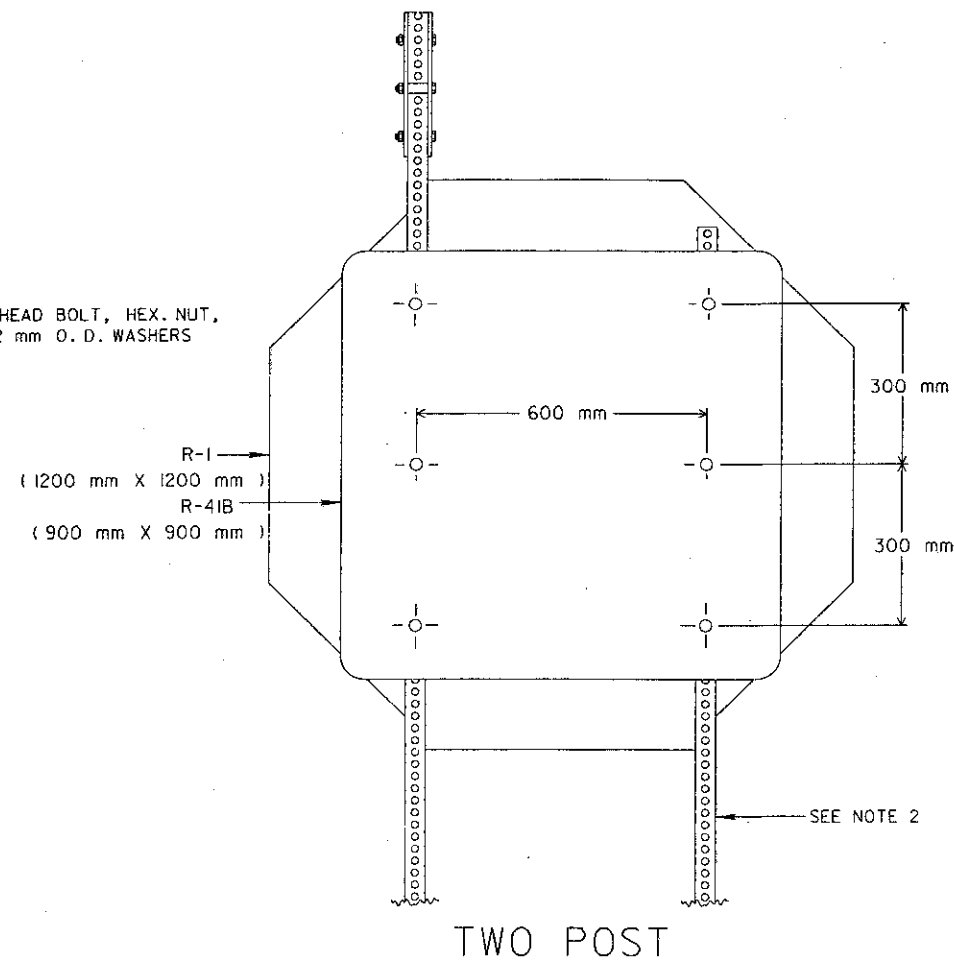
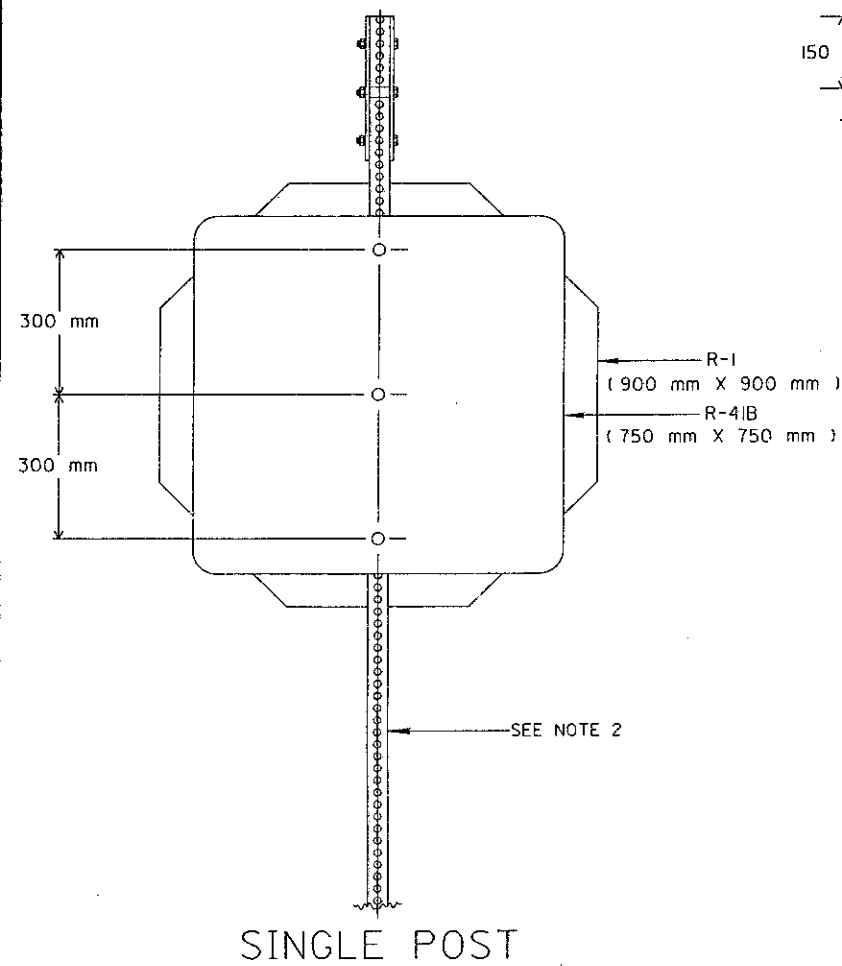
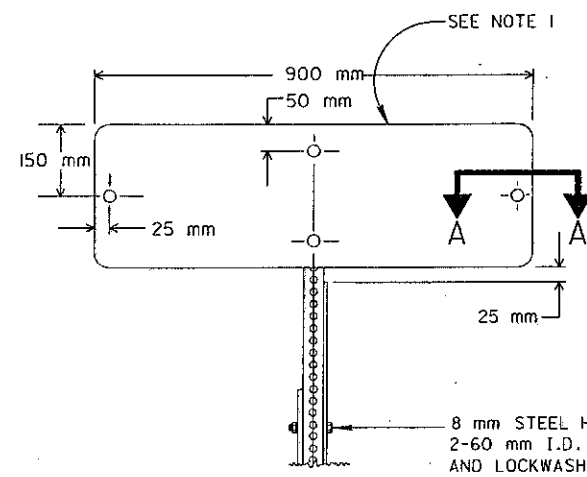
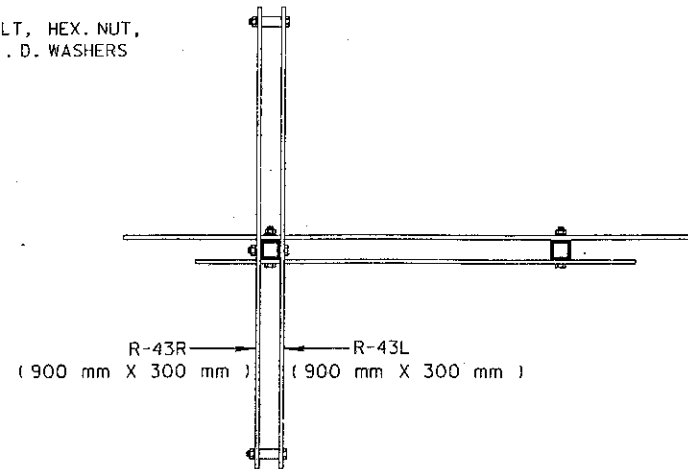


NOTES

1. IN SPECIAL SITUATIONS, A 1200 mm X 450 mm R-43L(R) SIGN MAY BE USED IN LIEU OF THE 900 mm X 300 mm R-43L(R) SIGN.
2. ALL SUPPORTS SHALL BE SQUARE TUBULAR STEEL.
3. LENGTH OF SPACER SHALL BE EQUAL TO POST SIZE.
4. FOR POST(S) INSTALLATION DETAILS, SEE STANDARD DRAWING TC-41.20M.



SECTION A-A



M E T R I C

BUREAU OF DESIGN SERVICES
DIVISION OF HIGHWAYS
OHIO DEPARTMENT OF TRANSPORTATION

TRAFFIC CONTROL

DATE
07/01/94

" ONE WAY " SIGN
SUPPORT DETAILS

STANDARD
CONSTRUCTION
DRAWING

TC-41.50M

APPROVED *Jay C. ...* ENGR. OF DESIGN SERVICES