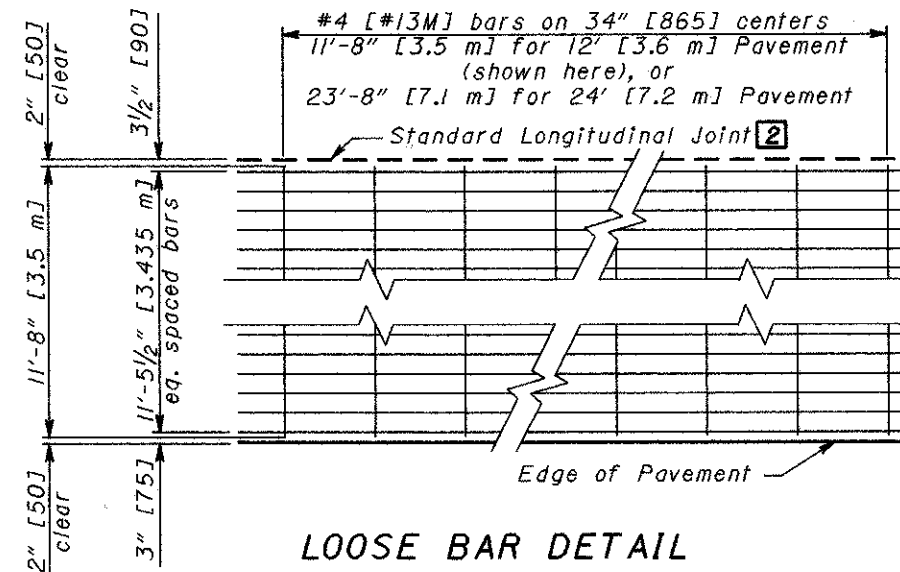
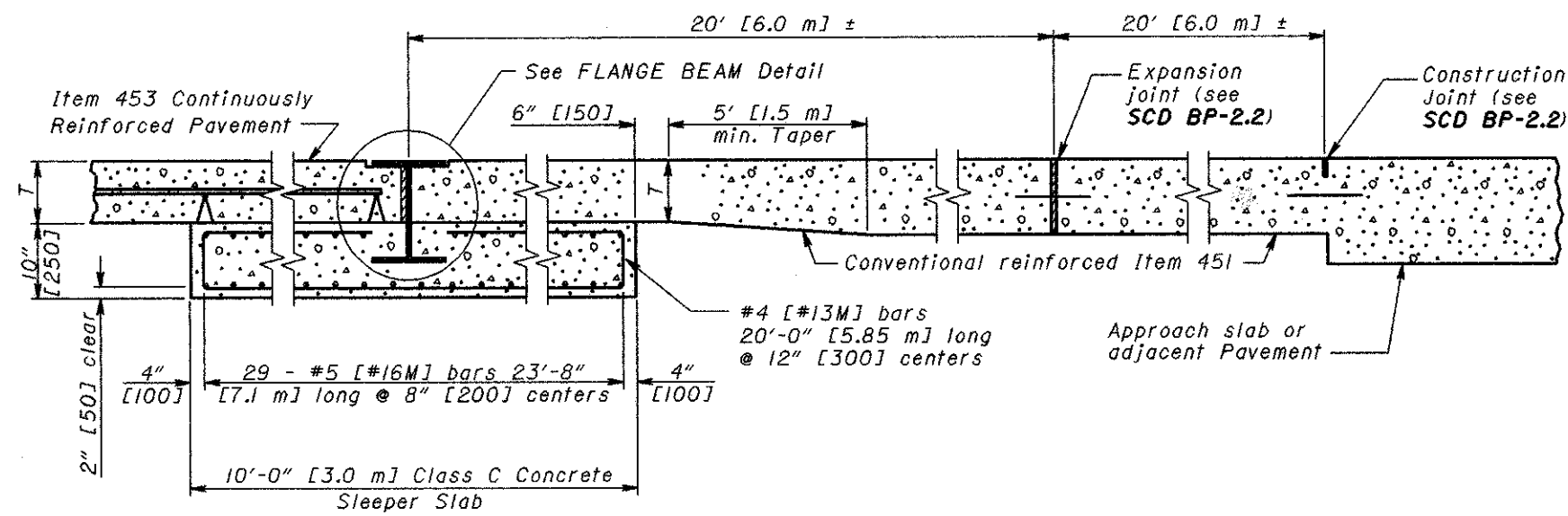


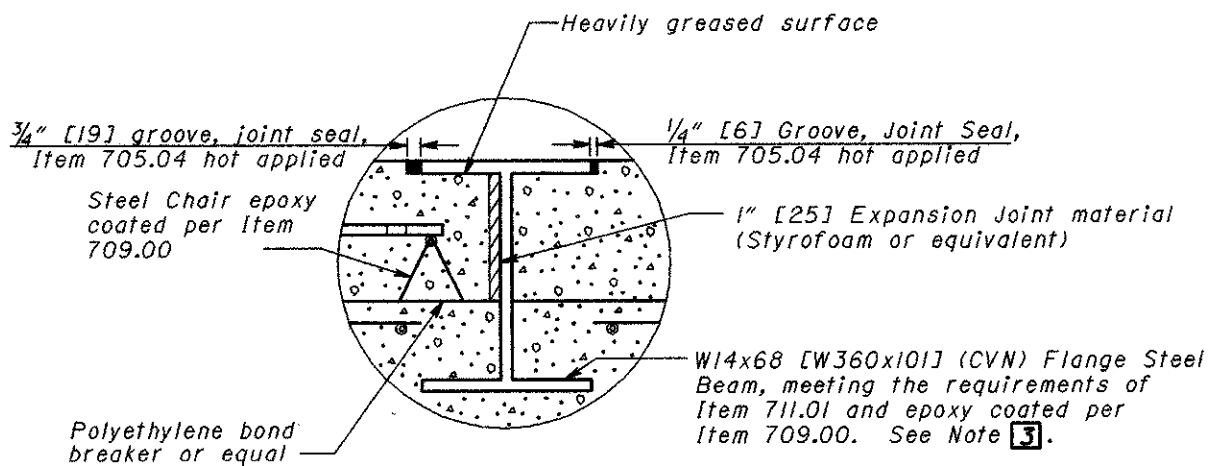
PLAN



LOOSE BAR DETAIL

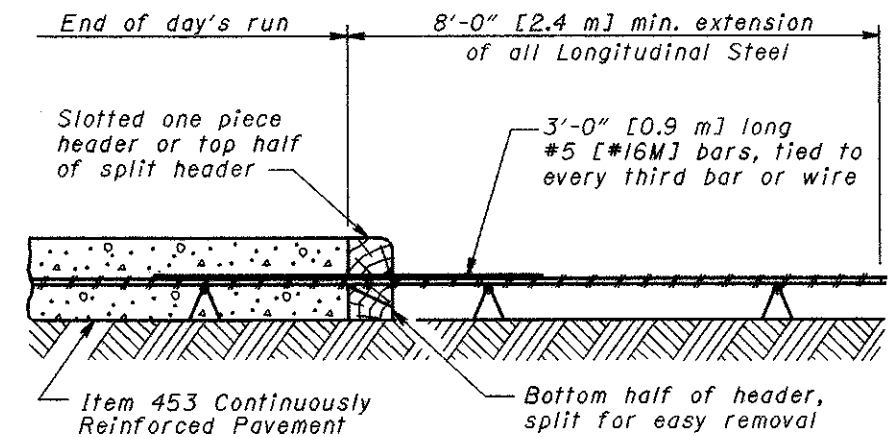


FLANGE BEAM JOINT



FLANGE BEAM DETAIL

STEEL REQUIREMENTS		
T	Bar Size	No. Bars per 12' [3.6 m] Lane
8" [200]	#5 [#16M]	23
9" [230]	#6 [#19M]	18
10" [250]	#6 [#19M]	20
11" [280]	#6 [#19M]	22
12" [300]	#7 [#22M]	18
13" [330]	#7 [#22M]	20
14" [360]	#7 [#22M]	21



CONSTRUCTION JOINT

NOTES

REINFORCING STEEL: All steel shall be placed in the concrete so that the longitudinal steel is located between a minimum cover of 2 1/2" [65] and a maximum depth of T/2.

ALL LONGITUDINAL LAPS: Laps shall be tied so as to provide continuous longitudinal reinforcing.

ITEM 709.03 BARS: All bars shall be epoxy coated per Item 709.00 and shall be set on chairs ahead of the paving operation. Minimum bar length is 40' [12.2 m].

LEGEND

- [1] No lap shall occur within 8' [2.4 m] ahead or 3' [0.9 m] behind a construction joint in the direction of paving.
- [2] If 23'-8" [7.2 m] bars are used, omit tie bars.
- [3] Weld 3/8" [10] plates on ends of beam. The plates shall have 5/8" [16] holes for drainage just above the sleeper slab.

THIS DRAWING REPLACES BP-1.2M DATED 10-28-94.

STANDARD ROADWAY CONSTRUCTION DRAWING
ROADWAY ENGINEERING SERVICES
REVISIONS
M. EVANS
D. FOCKE
DATE
7-28-00
ROADWAY DESIGN ENGINEER