

LOT 63 MERCHANTS SURVEY

WILLOUGHBY CORNER LTD.
AN OHIO LIMITED LIABILITY COMPANY
#970015922
5-15-97
27A-30-04

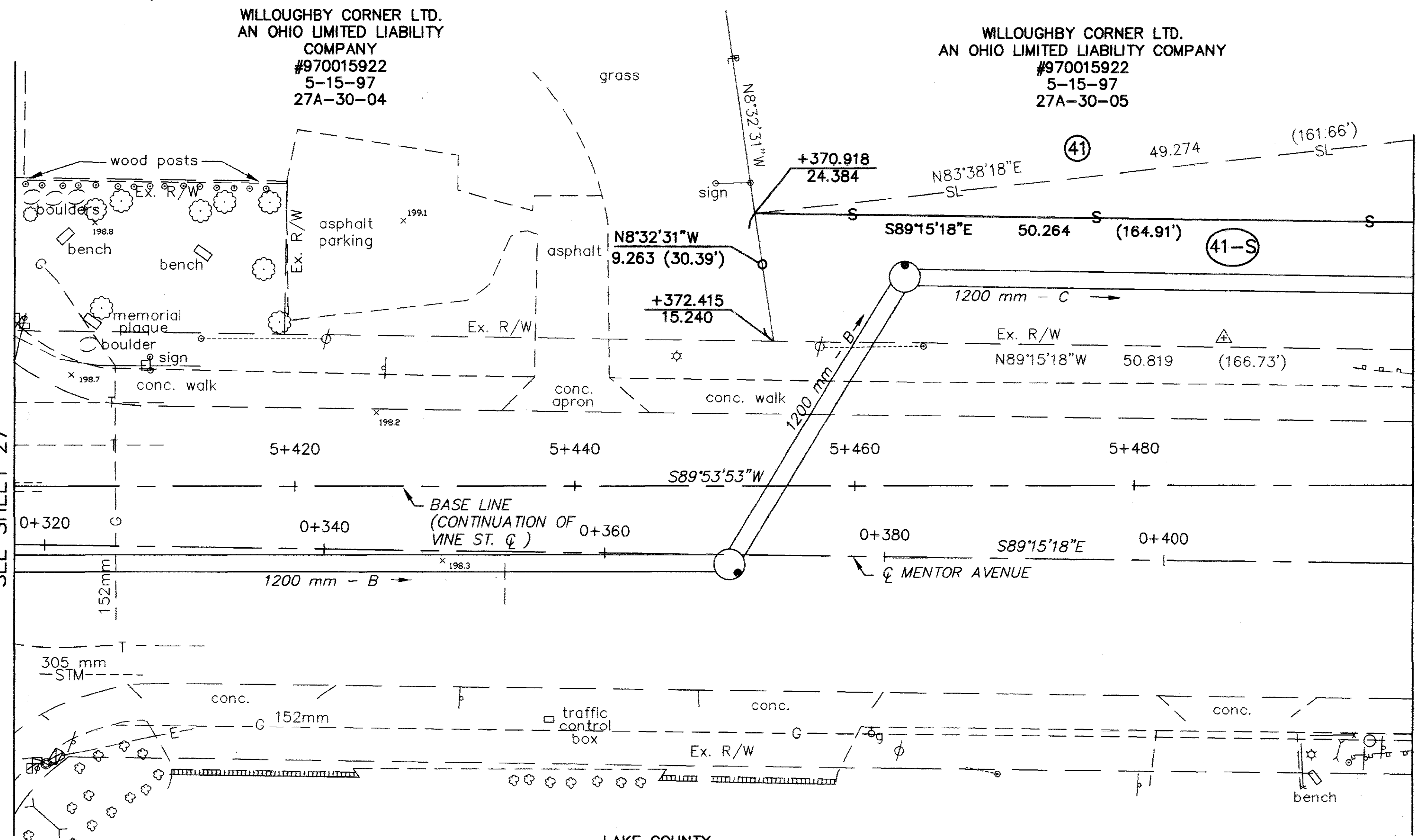
WILLOUGHBY CORNER LTD.
AN OHIO LIMITED LIABILITY COMPANY
#970015922
5-15-97
27A-30-05

LAKE COUNTY
WILLOUGHBY TOWNSHIP
T-10N & R-10W
CITY OF WILLOUGHBY

MERCHANTS SURVEY

MATCH LINE STA. 0+317.851 (MENTOR AVE.)
MATCH LINE STA. 5+400 (BASE LINE)
SEE SHEET 27

MATCH LINE STA. 5+500 (BASE LINE)
MATCH LINE STA. 0+417.851 (MENTOR AVE.)
SEE SHEET 29



NOTES: BASIS OF BEARING FOR THIS PROJECT IS AS ESTABLISHED ON PRIOR PROJECT PLANS LAK-2-0.00.
BASIS OF STATIONING FOR THIS PROJECT IS AS ESTABLISHED ON PRIOR PROJECT PLANS LAK-20-5.54 FOR ROADWAY EAST OF ERIE STREET.
EXISTING RIGHT OF WAY LOCATION AND WIDTH DETERMINED USING RIGHT OF WAY PLAN SH. NOS. 79 AND 80 FROM PRIOR PROJECT PLANS LAK-20-5.54.

REV.	DATE	DESCRIPTION