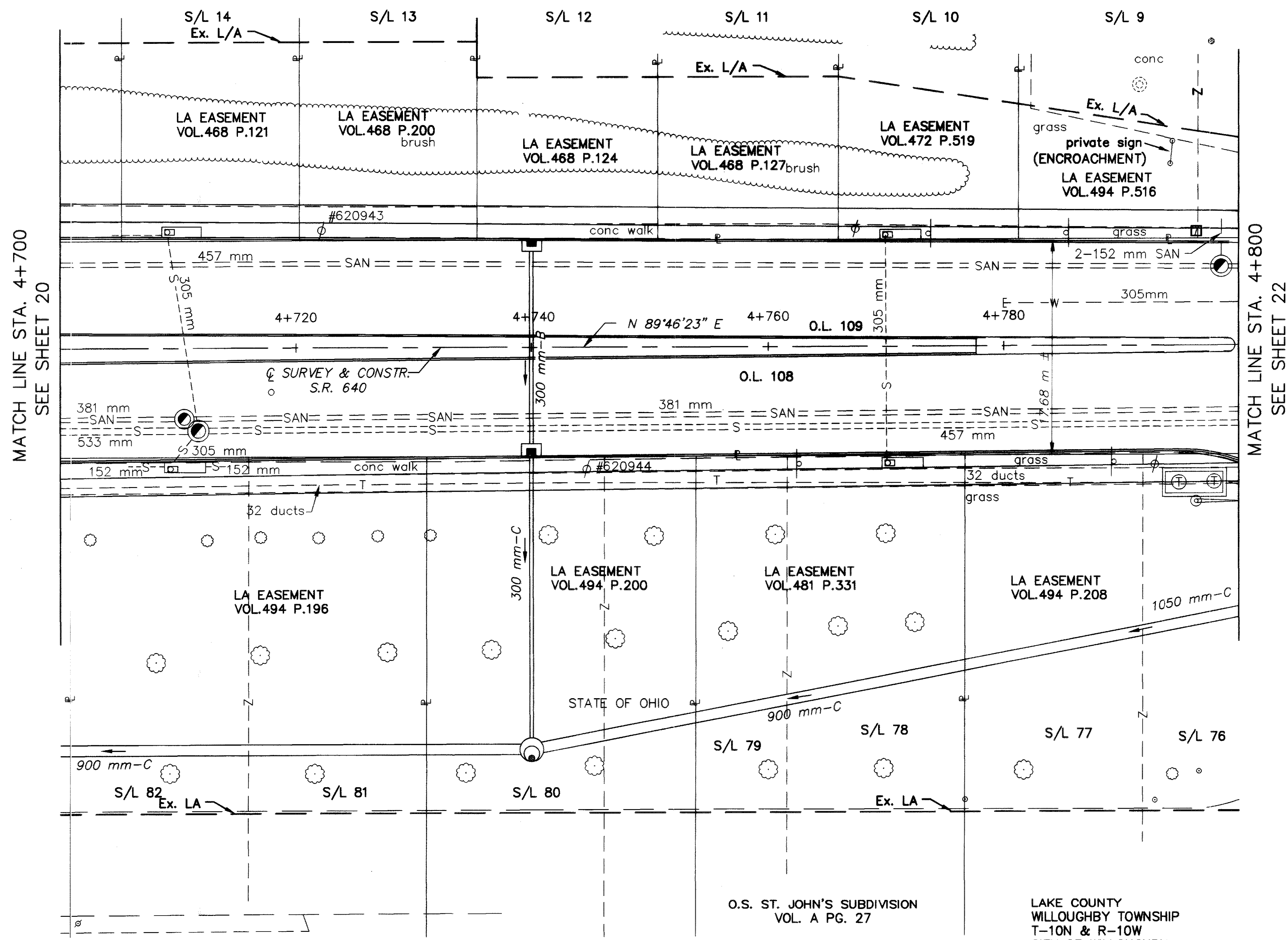


E.J. DICKEY'S LAND  
SECOND SURVEY  
VOL. 8 PG. 43



MATCH LINE STA. 4+700  
SEE SHEET 20

MATCH LINE STA. 4+800  
SEE SHEET 22

NOTES: BASIS OF BEARING FOR THIS PROJECT IS AS ESTABLISHED ON PRIOR PROJECT PLANS LAK-2-0.00.

EXISTING RIGHT OF WAY LOCATION AND WIDTH DETERMINED USING RIGHT OF WAY PLAN SH. NOS. 24 AND 25 FROM PRIOR PROJECT PLAN LAK-640-2.56.

North Industrial Parkway

O.S. ST. JOHN'S SUBDIVISION  
VOL. A PG. 27

LAKE COUNTY  
WILLOUGHBY TOWNSHIP  
T-10N & R-10W  
CITY OF WILLOUGHBY

PID NO. 13722

STATE JOB NO. 124390

RIGHT OF WAY PLAN  
STA. 4+700 TO STA. 4+800

LAK-640-3.444(2.14)

21 / 29

REV.	DATE	DESCRIPTION

213T  
214