

1:200
RATIO IN METERS

PID NO.
13722

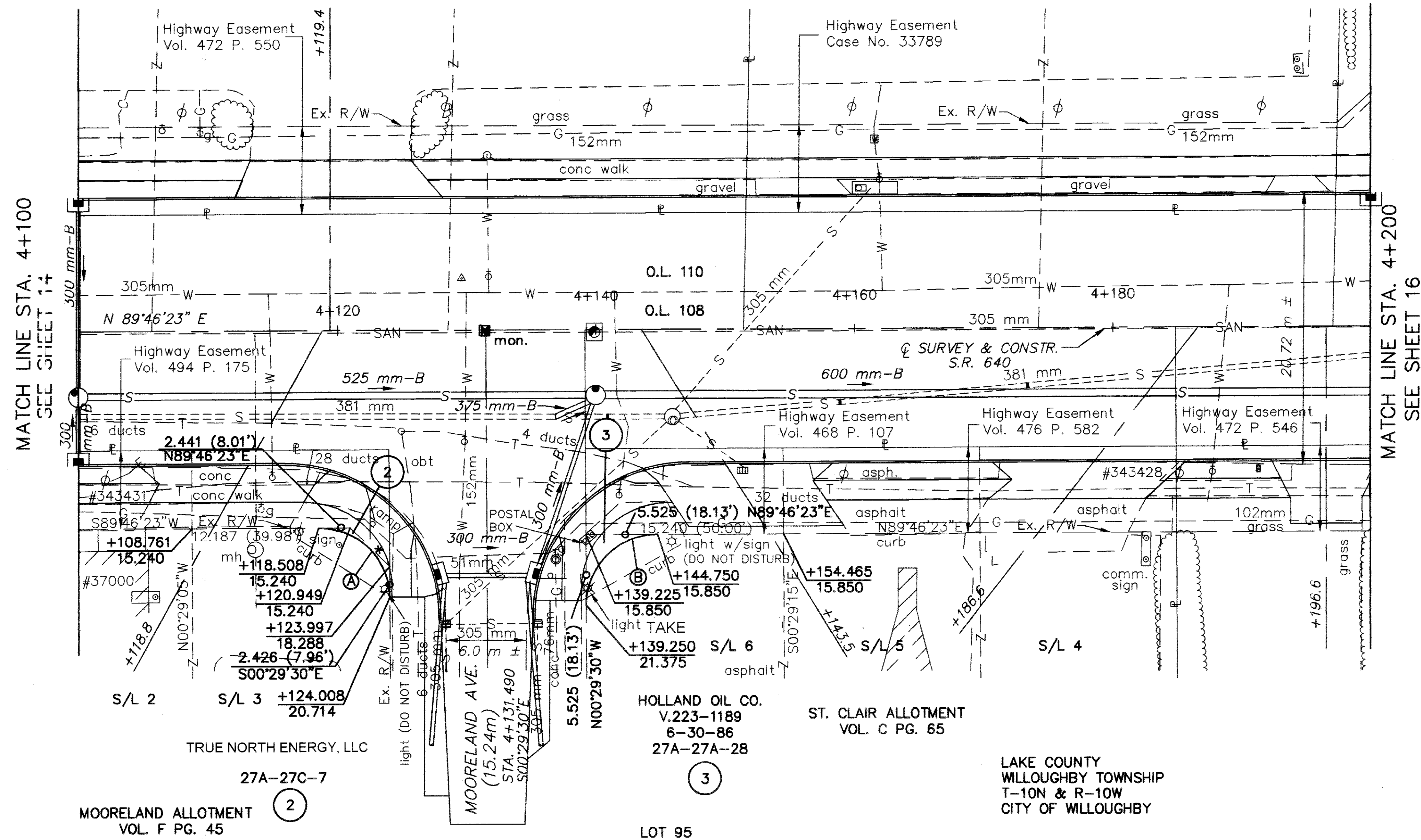
STATE JOB NO.
124390

RIGHT OF WAY PLAN
STA. 4+100 TO STA. 4+200

LAK-640-3.444(2.14)

15/29

213N
214



MATCH LINE STA. 4+100
SEE SHEET 14

MATCH LINE STA. 4+200
SEE SHEET 16

NOTE: BASIS OF BEARING FOR THIS PROJECT IS AS ESTABLISHED ON PRIOR PROJECT LAK-2-0.00.

EXISTING RIGHT OF WAY LOCATION AND WIDTH DETERMINED USING RIGHT OF WAY PLAN SH. NO. 24 FROM PRIOR PROJECT PLAN LAK-640-2.56.

DIMENSIONS SHOWN ABOVE:
* 4.311 (14.14') S45°13'37"E

RIGHT OF WAY CURVE DATA

CURVE	RADIUS	LENGTH	LENGTH	CHORD BEARING
A	5.500m (18.04')	8.614m (28.25')	7.760m (25.45')	N45°21'38"W
B	5.500m (18.04')	8.664m (28.42')	7.796m (25.57')	S44°38'34"W

REV.	DATE	DESCRIPTION	DATE OF COMPLETION
1	5/99	CHANGED LIGHT TO TAKE PCL 3	