



1:200
RATIO IN METERS

PID NO.
13722

STATE JOB NO.
124390

RIGHT OF WAY PLAN
STA. 3+600 TO STA. 3+700

LAK-640-3.444(2.14)

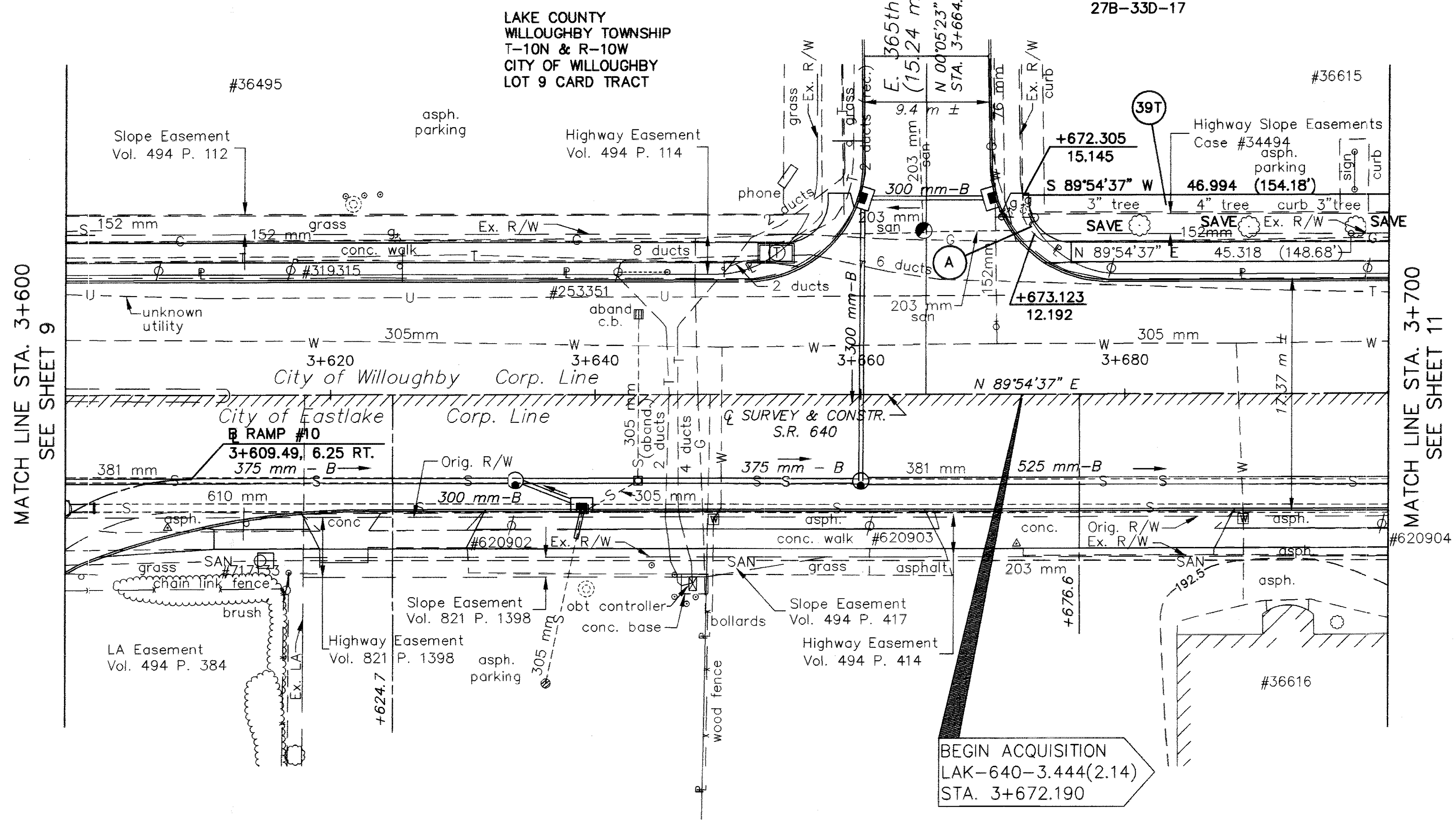
10/29

2131
214

SEE SHEET 161

39
BDFM CO.
V.3-273
1-19-83
27B-33D-17

A
R=6.096
Δ=29°07'29"
L=3.100
C=3.066
CB=S15°33'39"E



MATCH LINE STA. 3+600
SEE SHEET 9

MATCH LINE STA. 3+700
SEE SHEET 11

BEGIN ACQUISITION
LAK-640-3.444(2.14)
STA. 3+672.190

LAKE COUNTY
WILLOUGHBY TOWNSHIP
T-10N & R-10W
CITY OF EASTLAKE
LOT 9 CARD TRACT

NOTES: BASIS OF BEARING FOR THIS PROJECT IS AS ESTABLISHED ON PRIOR PROJECT PLANS LAK-2-0.00.

EXISTING RIGHT OF WAY LOCATION AND WIDTH DETERMINED USING RIGHT OF WAY PLAN SH. NO. 131 FROM PRIOR PROJECT PLANS LAK-2-0.00.

REV.	DATE	DESCRIPTION