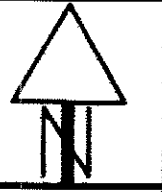


LAK-640-3.444(2.14)

CITY OF EASTLAKE
CITY OF WILLOUGHBY
LAKE COUNTY
T-10N & R-10W

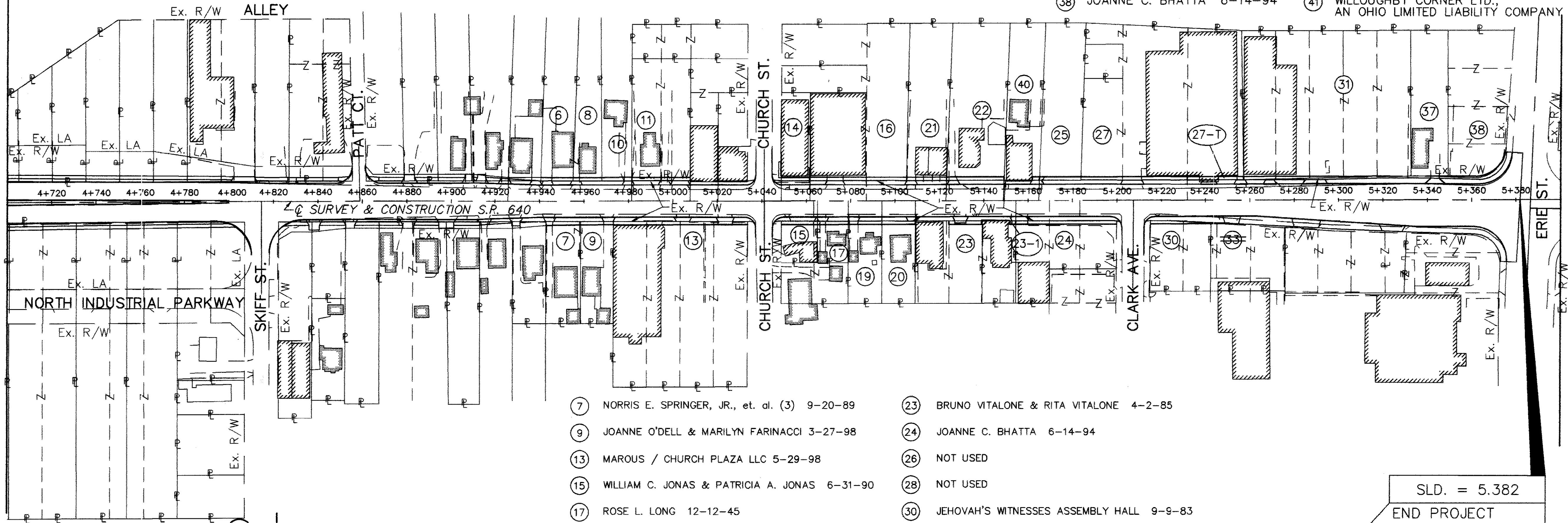


1:1000
RATIO IN METERS

- ⑥ ROBERT E. & ANITA DISTLER 1-2-96
- ⑧ ROBERT E. & ANITA DISTLER 1-2-96
- ⑩ JOHN R. MROZEK 11-14-86
- ⑪ RONALD M. & VALERIE L. BARE 2-24-98
- ⑫ NOT USED
- ⑭ FRANK J. & KATHLEEN L. KUCHAR, TR. 10-28-94
- ⑯ K&M ENTERPRISES 6-23-81
- ⑰ NOT USED
- ⑳ LAWRENCE C. KIMBALL & PHRANIA KIMBALL 11-29-93
- ㉑ A.J.L. LTD. 11-20-97

- ㉒ JEHOVAH'S WITNESSES ASSEMBLY HALL, INC. 9-9-75
- ㉓ THE GREATER CLEVELAND CONGREGATION OF JEHOVAH'S WITNESSES, INC. 4-18-74
- ㉔ NOT USED
- ㉕ WICK MOTORS CORPORATION, AN OHIO CORPORATION 11-10-71
- ㉖ NOT USED
- ㉗ NOT USED
- ㉘ NOT USED
- ㉙ NOT USED
- ㉚ NOT USED
- ㉛ C.B.V. LTD. 9-3-98
- ㉜ GERALDINE M. HERMAN 1-5-56
- ㉝ JOANNE C. BHATTA 6-14-94
- ㉞ WILLOUGHBY CORNER LTD., AN OHIO LIMITED LIABILITY COMPANY 5-15-97

MATCH LINE STA. 4+700
SEE SHEET 3



MATCH LINE STA. 0+317.851 (☐ MENTOR AVE.)
MATCH LINE STA. 5+400 (BASE LINE)

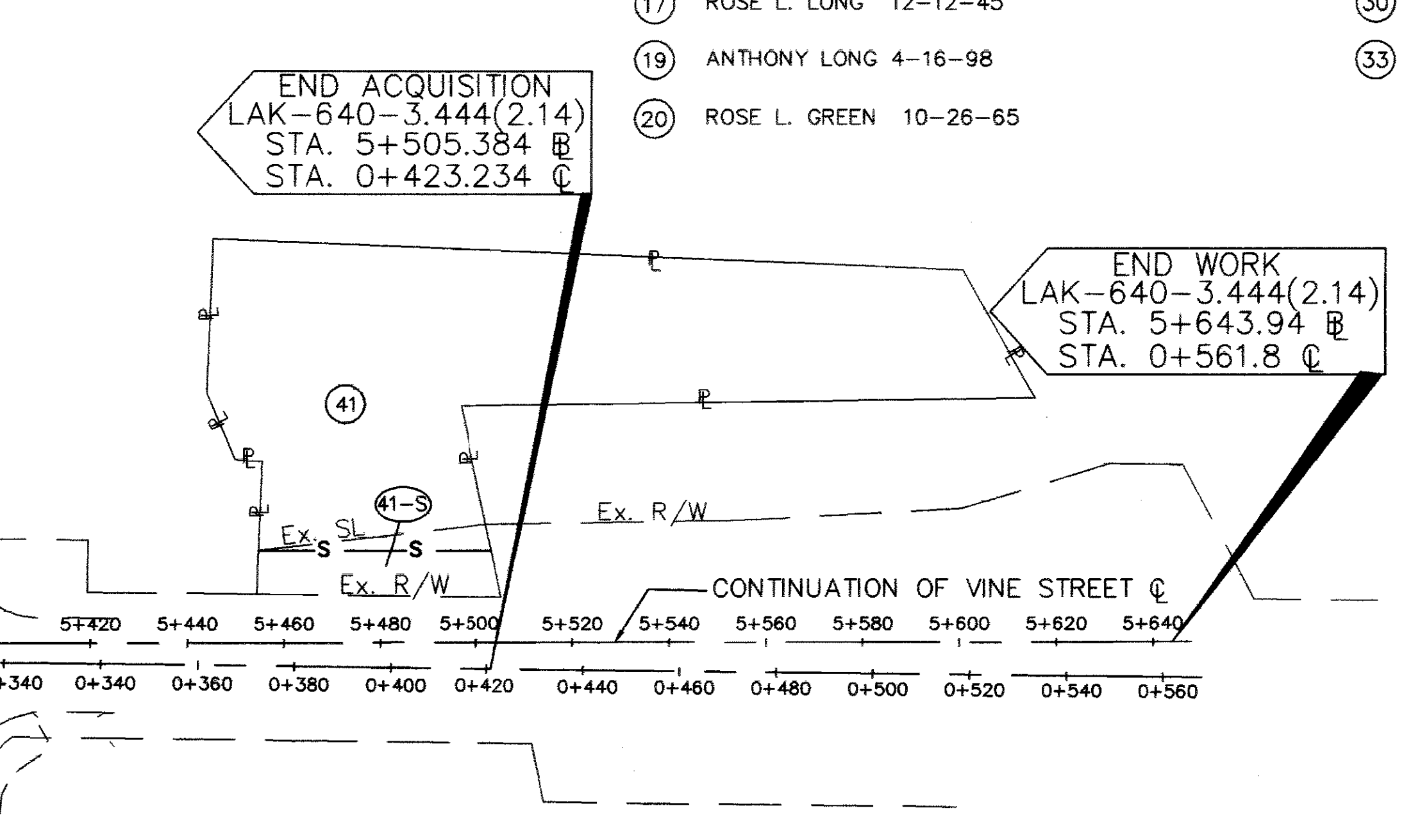
- ⑦ NORRIS E. SPRINGER, JR., et. al. (3) 9-20-89
- ⑨ JOANNE O'DELL & MARILYN FARINACCI 3-27-98
- ⑬ MAROUS / CHURCH PLAZA LLC 5-29-98
- ⑮ WILLIAM C. JONAS & PATRICIA A. JONAS 6-31-90
- ⑰ ROSE L. LONG 12-12-45
- ⑲ ANTHONY LONG 4-16-98
- ⑳ ROSE L. GREEN 10-26-65
- ㉓ BRUNO VITALONE & RITA VITALONE 4-2-85
- ㉔ JOANNE C. BHATTA 6-14-94
- ㉖ NOT USED
- ㉘ NOT USED
- ㉛ JEHOVAH'S WITNESSES ASSEMBLY HALL 9-9-83
- ㉞ THE OHIO BELL TELEPHONE COMPANY 10-1-74
NOT USED

END ACQUISITION
LAK-640-3.444(2.14)
STA. 5+505.384 ☐
STA. 0+423.234 ☐

END WORK
LAK-640-3.444(2.14)
STA. 5+643.94 ☐
STA. 0+561.8 ☐

SLD. = 5.382
END PROJECT
LAK-640-3.444(2.14)
STA. 5+381.8

MATCH LINE STA. 0+317.851 (☐ MENTOR AVE.)
MATCH LINE STA. 5+400 (BASE LINE)



STRUCTURE KEY:

- RESIDENTIAL BUILDING
- COMMERCIAL BUILDING

10/14/98	PL,R/W,LA,LOT LINES,etc.
04/24/2000	Parcel 33 is no longer needed and is now marked Not Used.
REV.	DATE DESCRIPTION
	DATE OF COMPLETION

PID NO. 13722

STATE JOB NO. 124390

PROPERTY MAP STA. 4+700 TO STA. 5+643.94

LAK-640-3.444(2.14)

4 / 29

213C
214