

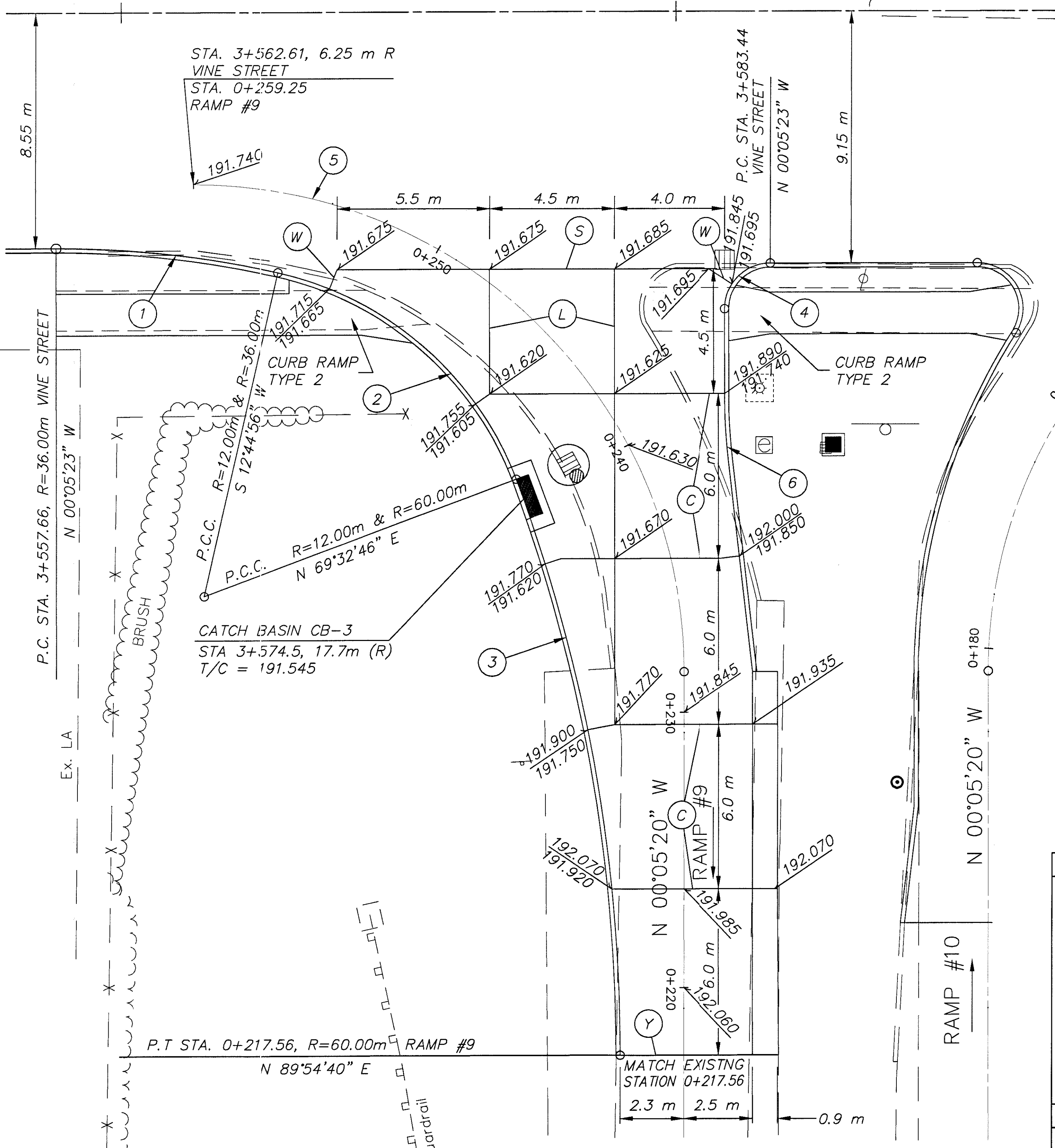
VINE STREET N 89°54'37" E

3+560

3+580

3+600

STA. 3+562.61, 6.25 m R  
VINE STREET  
STA. 0+259.25  
RAMP #9



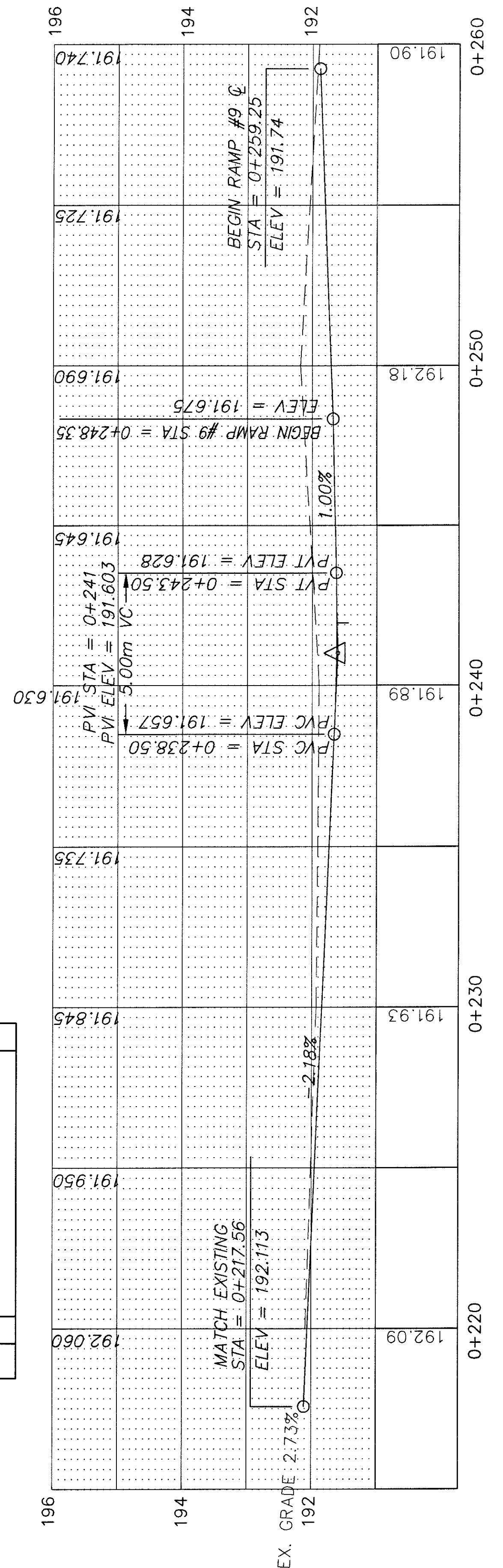
LEGEND

- (C) CONTRACTION JOINT AS PER B.P.-2.2M
- (L) LONGITUDINAL JOINT AS PER B.P.-2.1M
- (S) LONGITUDINAL JOINT AS PER B.P.-2.1M WITHOUT TIE BARS
- (W) EXPANSION JOINT AS PER B.P.-2.2M WITHOUT TIE BARS
- (Y) BUTT JOINT, TYPE Y, AS PER B.P.-2.5M

202	203	203	203	608	608	255	304	451	830	660
PAVEMENT REMOVED	EXCAVATION, NOT INCLUDING EMBANKMENT CONSTRUCTION	EMBANKMENT	SUBGRADE COMPACTION	100 mm CONC. WALK	CURB RAMP TYPE 2	FULL DEPTH PAVEMENT SAWING	150 mm AGGREGATE BASE AS PER PLAN	230 mm REINFORCED CONCRETE PAVEMENT	CURB TYPE, 2A	SODDING, UNSTAKED AS PER PLAN
S.M.	C.M.	C.M.	S.M.	S.M.	EA.	m	C.M.	S.M.	m	S.M.
452.20	41.2	12.6	461.51	20.14	2	4.80	69.23	461.51	56.59	42.8

CURVE DATA TO FACE OF CURB

①	②	③	④	⑤	⑥
$\Delta = 12^{\circ}50'19''$	$\Delta = 56^{\circ}47'50''$	$\Delta = 20^{\circ}21'51''$	$\Delta = 90^{\circ}00'00''$	$\Delta = 90^{\circ}00'00''$	$\Delta = 6^{\circ}30'22''$
R = 36.000 m	R = 12.000 m	R = 60.000 m	R = 1.650 m	R = 17.680 m	R = 20.000 m
T = 4.050 m	T = 6.488 m	T = 10.776 m	T = 1.650 m	T = 17.680 m	T = 1.137 m
L = 8.067 m	L = 11.895 m	L = 21.325 m	L = 2.592 m	L = 27.772 m	L = 2.271 m
C = 8.050 m	C = 11.414 m	C = 21.213 m	C = 2.334 m	C = 25.003 m	C = 2.270 m
E = 0.227 m	E = 1.642 m	E = 0.960 m	E = 0.684 m	E = 7.323 m	E = 0.032 m



EXTRA AREA RAMP #9

LAK-640-3.444