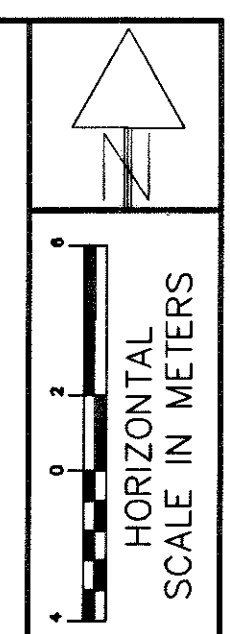
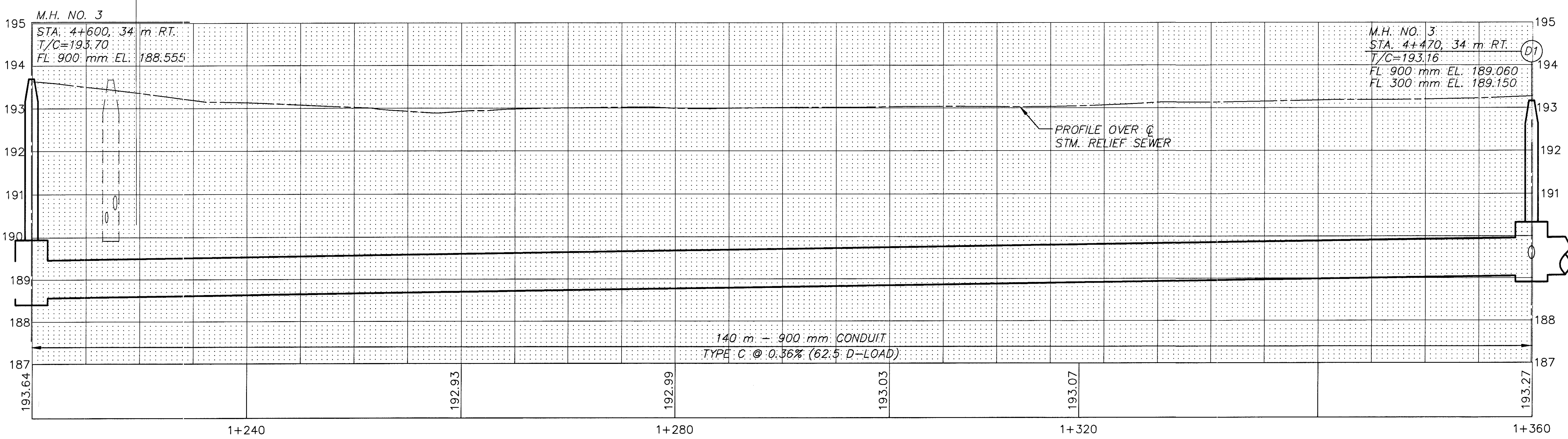
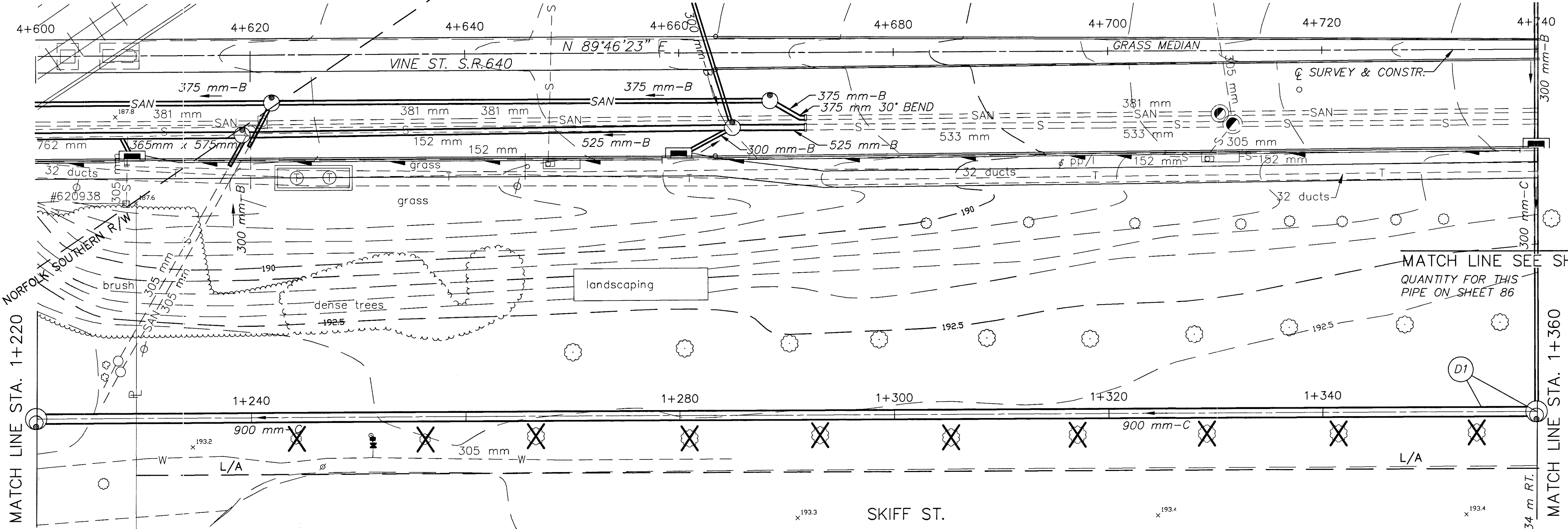


SEE SHEET 105 FOR ESTIMATED DRAINAGE QUANTITIES



CALC. BY:  
CHECKED BY:

CITY OF WILLOUGHBY, LAKE COUNTY, OHIO  
PROPOSED STORM RELIEF SEWER  
STA. 4+600 TO STA. 4+740

LAK-640-3.444