

CITY OF WILLOUGHBY
ONE PUBLIC SQUARE
WILLOUGHBY, OHIO

**STORM WATER
900mm(36")DIA.
GRAVITY
STORM SEWER**

PIPE DEPTH: 4.0M
(13.12') BELOW
THIS POINT

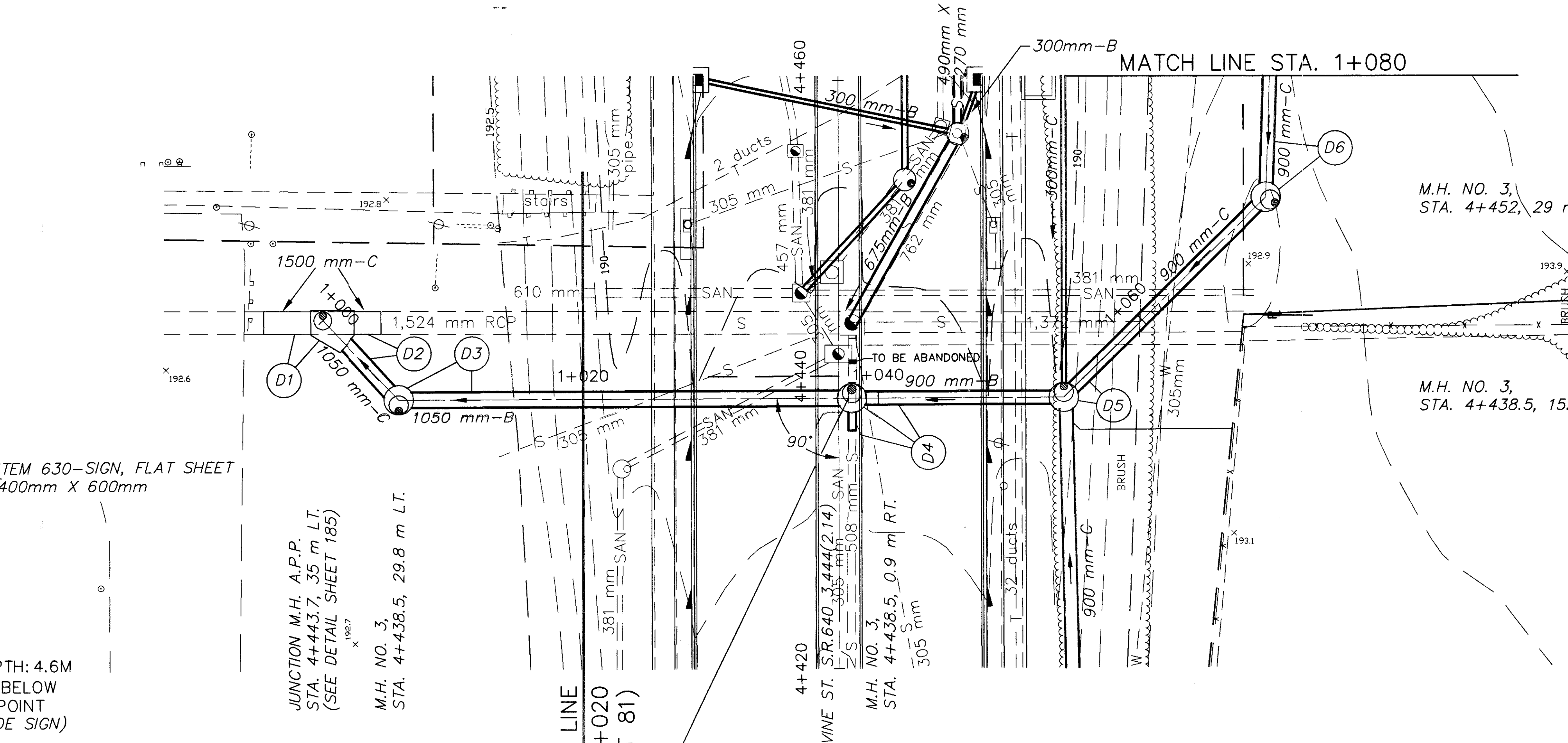
IN CASE OF EMERGENCY CALL
CITY OF WILLOUGHBY SERVICE DEPT
(440) 951-2800

ITEM 630-SIGN, FLAT SHEET
400mm X 600mm

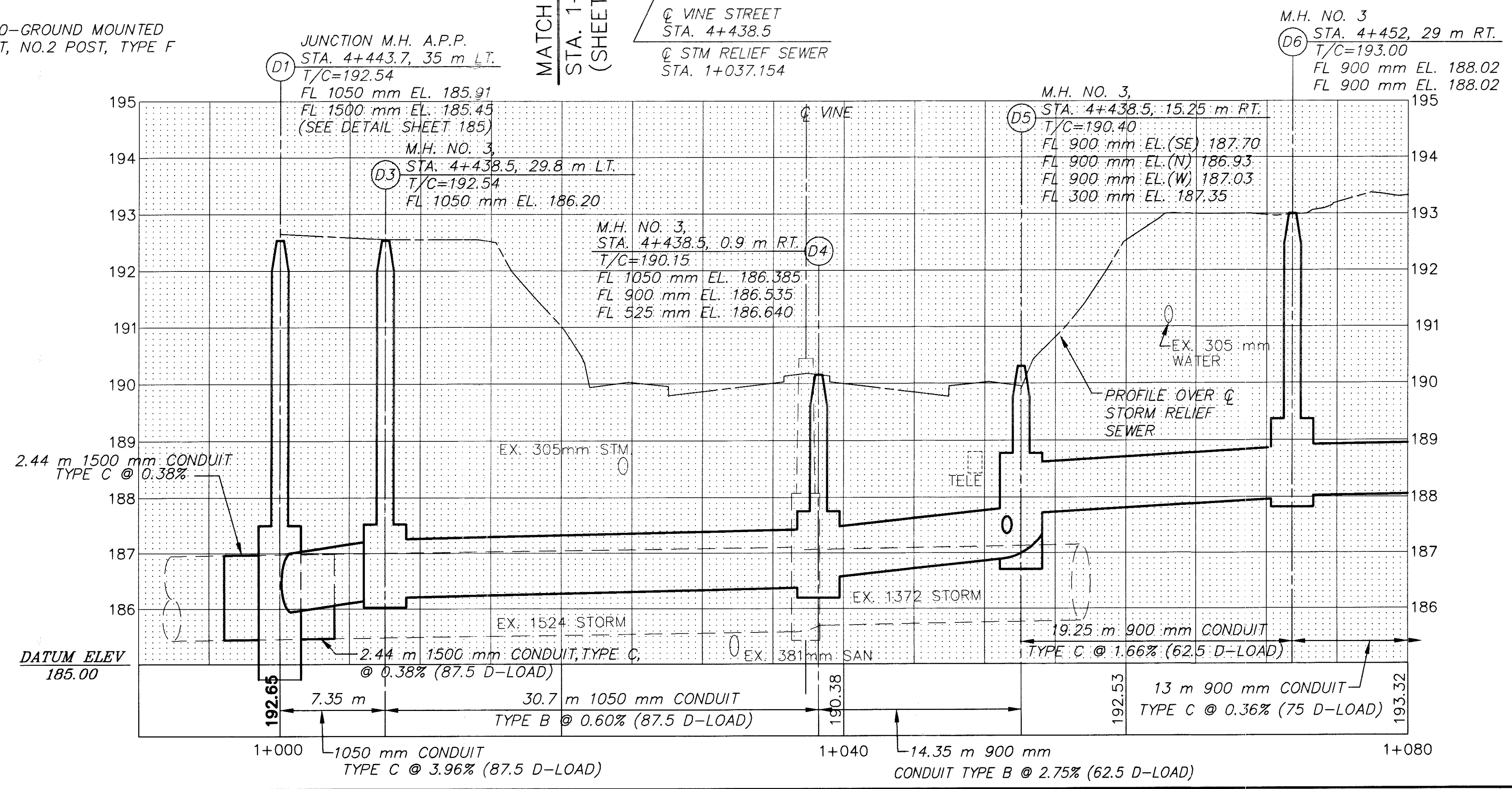
PIPE DEPTH: 4.6M
(15.1') BELOW
THIS POINT
(EAST SIDE SIGN)

ITEM 630-GROUND MOUNTED
SUPPORT, NO.2 POST, TYPE F

**SIGN DETAIL
FOR
CROSSING**
(WEST SIDE SIGN SHOWN)
(SEE SHEET 102 FOR LOCATIONS)



SEE SHT. 105 FOR ESTIMATED
DRAINAGE QUANTITIES.
SEE SHT. 185 FOR JUNCTION
CHAMBER DETAILS.



CITY OF WILLOUGHBY, LAKE COUNTY, OHIO

**PROPOSED STORM RELIEF SEWER
STA. 4+420 TO STA. 4+460**

LAK-640-3.444

