

SEE SHEET 139 FOR CATCH BASIN CROSS-OVERS
 SEE SHEET 202 FOR WATER WORK QUANTITIES
 SEE SHEET 60 FOR CONNECTION QUANTITIES
 SEE SHEET 61 FOR DRIVE QUANTITIES
 SEE SHEET 96 FOR ESTIMATED DRAINAGE QUANTITIES
 SEE SHEET 202 FOR UTILITY RELOCATION
 SEE SHEET 183A FOR DRAINAGE DETAILS

LEGEND

- W --- EX. WATER LINE
- SAN --- EX. SANITARY LINE
- G --- EX. GAS LINE
- S --- EX. STORM LINE
- T --- EX. TELEPHONE LINE

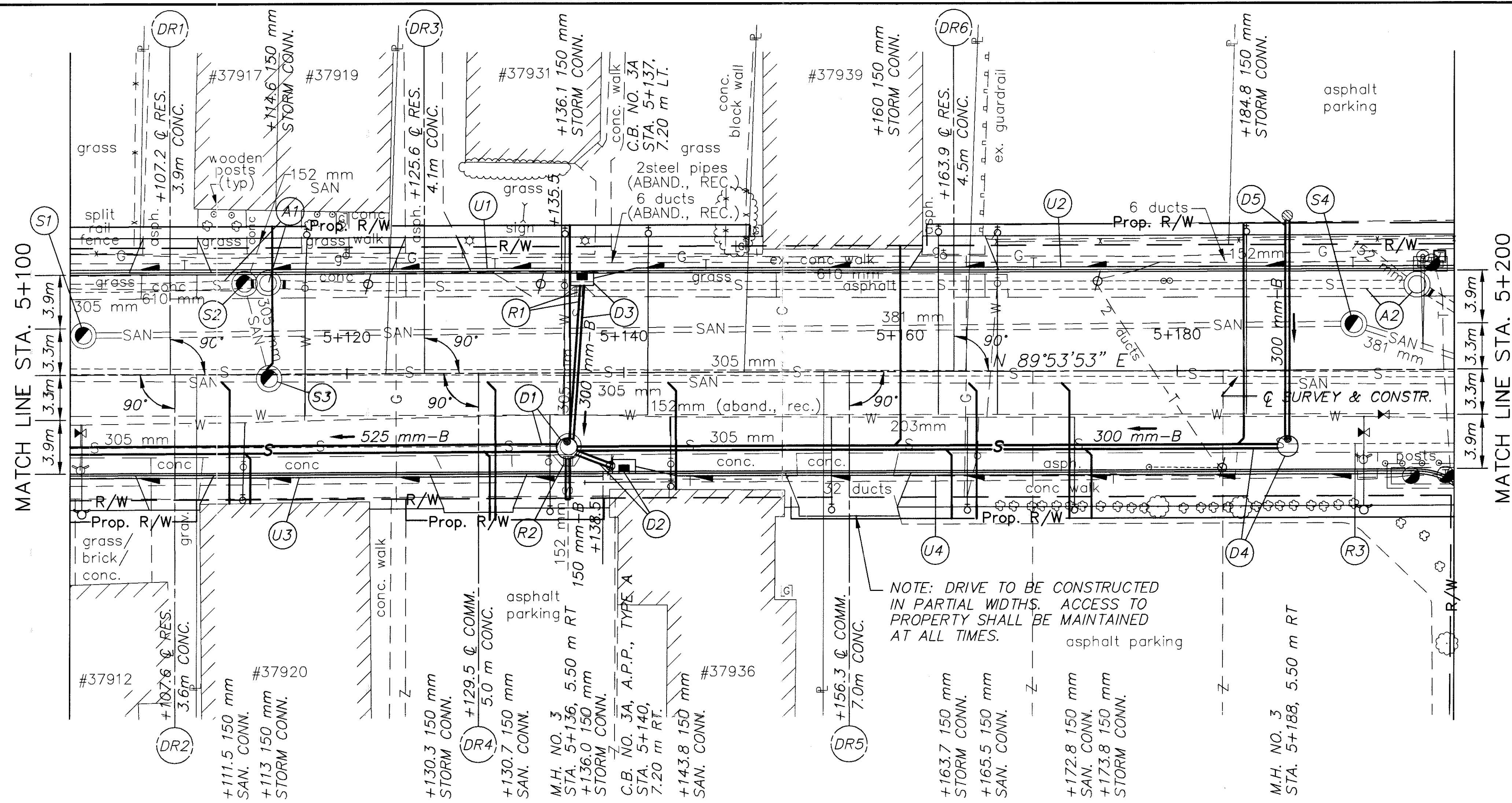
BENCH MARK: ELEV. 196.541
 STA. 5+100.74, OFFSET 6.94 m RT.
 HYDRANT
 TOP STEM

BENCH MARK: ELEV. 197.958
 STA. 5+193.45, OFFSET 6.48 m RT.
 HYDRANT
 TOP STEM

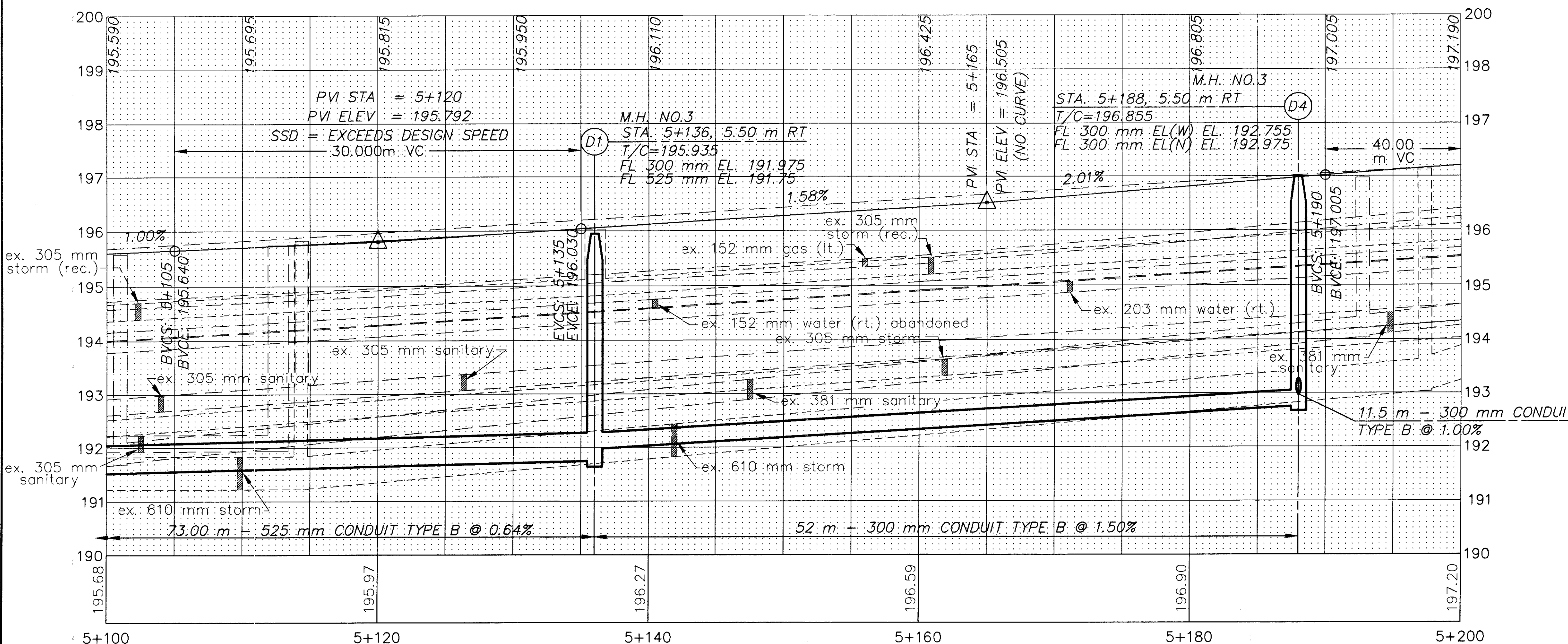
(*) 707.41 NON-PERFORATED,
 ASTM D-3034 SDR 35,
 707.33 OR 707.42

UNDERDRAINS

REFERENCE NUMBER	STATION		SIDE	603		605		BENDS AND BRANCHES FOR INFORMATION ONLY
	FROM	TO		150 mm CONDUIT, TYPE F (*)	150 mm SHALLOW PIPE UNDERDRAIN WITH FABRIC WRAP	150 mm X 45°		
	E ELEV.	E ELEV.					METER	
U1	5+100	5+135.5	L					
	195.445	194.815				35.5		
U2	5+137	5+200	L	3		60		1
	194.84	195.92						
U3	5+100	5+138.5	R			38.5		
	195.445	194.815						
U4	5+140	5+200	R	3		57		1
	194.84	195.92						
TOTALS CARRIED TO SHEET 96				6		191		2



NOTE: DRIVE TO BE CONSTRUCTED IN PARTIAL WIDTHS. ACCESS TO PROPERTY SHALL BE MAINTAINED AT ALL TIMES.



PLAN AND PROFILE SHEET
 STA. 5+100 TO STA. 5+200 S.R.: 640
 LAK-640-3.444
 93
 214