

SEE SHEET 92 FOR ESTIMATED DRAINAGE QUANTITIES.
 SEE SHEET 201 FOR WATERWORK QUANTITIES.
 SEE SHEETS 131, 134 FOR CATCH BASIN CROSSOVER PROFILES.
 SEE SHEET 61 FOR DRIVEWAY QUANTITIES.
 SEE SHEET 201 FOR UTILITY RELOCATION
 SEE SHEET 60 FOR CONNECTION SCHEDULE
 SEE SHEET 56 FOR ITEM 202-FENCE REMOVED FOR STORAGE, A.P.P.
 SEE SHEET 183A FOR DRAINAGE DETAILS

LEGEND

- W --- EX. WATER LINE
- SAN --- EX. SANITARY LINE
- G --- EX. GAS LINE
- S --- EX. STORM LINE
- T --- EX. TELEPHONE LINE

BENCH MARK: ELEV. 195.127
 STA. 4+910.40, OFFSET 6.82 m RT.
 HYDRANT
 TOP STEM

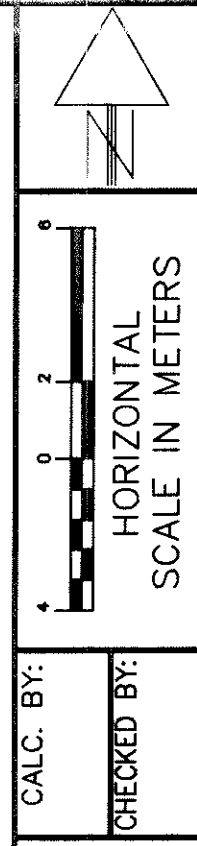
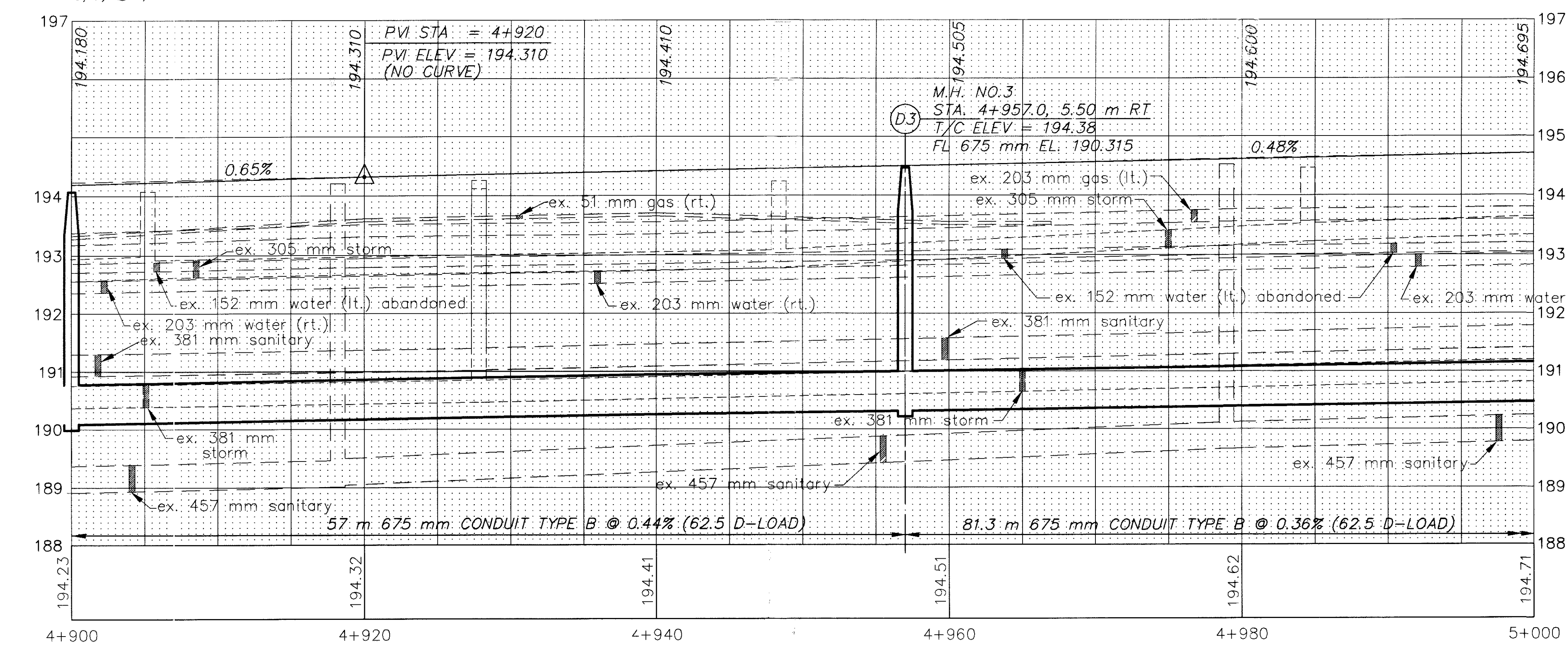
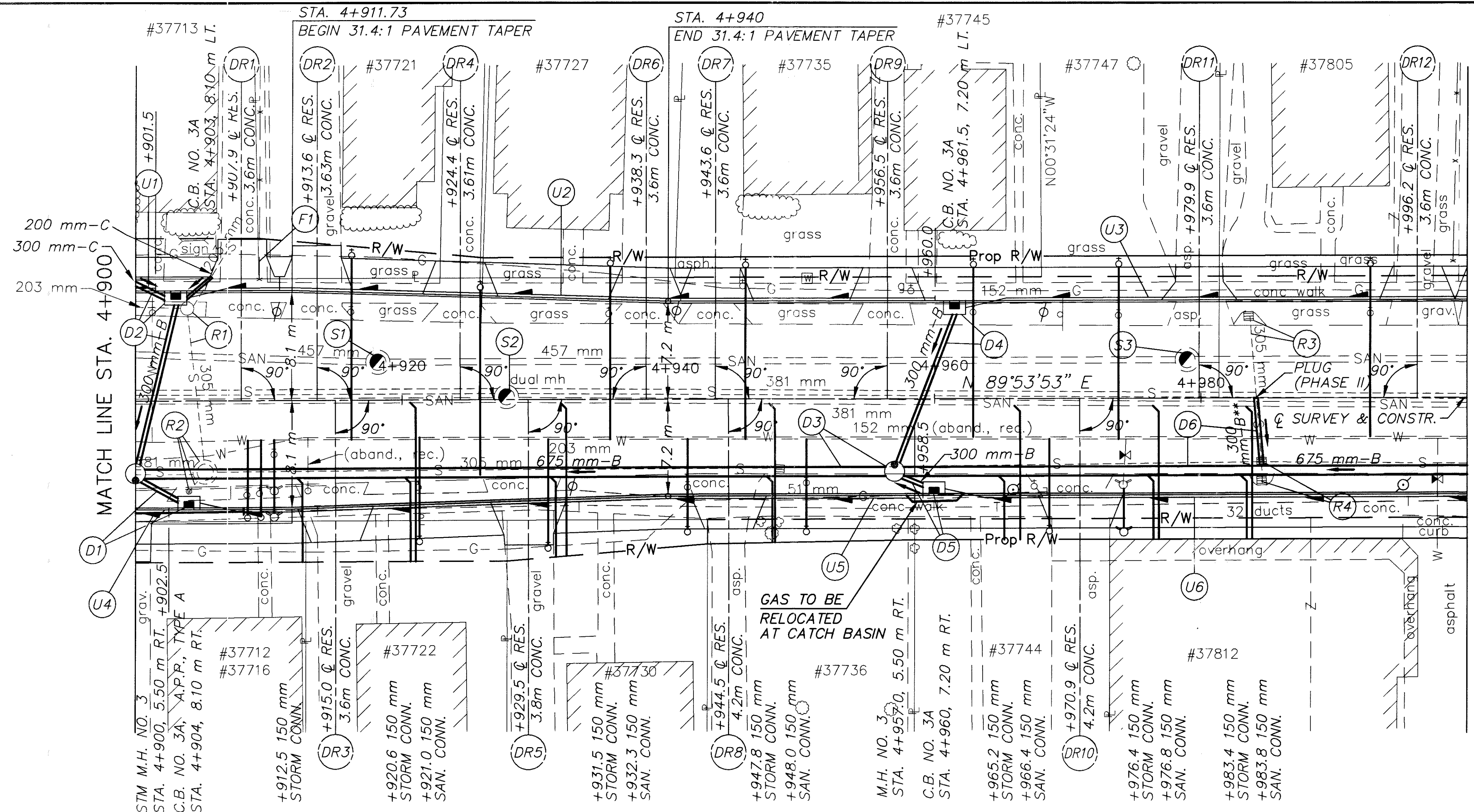
BENCH MARK: ELEV. 195.444
 STA. 4+974.14, OFFSET 6.54 m RT.
 HYDRANT
 TOP STEM

(*) 707.41 NON-PERFORATED,
 ASTM D-3034 SDR 35,
 707.33 OR 707.42

** PIPE TO BE INSTALLED TO MAINTAIN POSITIVE
 DRAINAGE FROM THE NORTH SIDE OF VINE ST.
 DURING PHASE I CONSTRUCTION. PIPE SHALL
 BE ABANDONED BY PLUGGING DURING PHASE II
 CONSTRUCTION.

UNDERDRAINS

REFERENCE NUMBER	STATION		SIDE	603		605		BENDS AND BRANCHES FOR INFORMATION ONLY
	FROM	TO		150 mm CONDUIT, TYPE F (*)	150 mm SHALLOW PIPE UNDERDRAIN WITH FABRIC WRAP	EACH		
	E ELEV.	E ELEV.					METER	
U1	4+900 192.895	4+901.5 192.920	L		1.5			
U2	4+903 192.940	4+960 193.235	L	3	54.0	1		
U3	4+961.5 193.230	5+000 193.430	L	3	35.5	1		
U4	4+900 192.895	4+902.5 192.910	R		2.5			
U5	4+904 192.920	4+958.5 193.230	R	3	51.5	1		
U6	4+960 193.235	5+000 193.430	R	3	37	1		
TOTALS CARRIED TO SHEET 92				12	182	4		



PLAN AND PROFILE SHEET
 STA. 4+900 TO STA. 5+000 S.R. 640

LAK-640-3.444