

SEE SHEET 159 FOR S.R.2 RAMP #15 EXTRA AREA
 SEE SHEET 76 FOR ESTIMATED DRAINAGE QUANTITIES
 SEE SHEET 195 FOR WATER WORK QUANTITIES
 SEE SHEETS 110, 111 FOR CATCH BASIN CROSS-OVERS
 SEE SHEET 195 FOR UTILITY RELOCATION

LEGEND

- W — EX. WATER LINE
- SAN — EX. SANITARY LINE
- G — EX. GAS LINE
- S — EX. STORM LINE
- T — EX. TELEPHONE LINE
- E — EX. ELECTRIC LINE
- C — EX. CABLE T.V.

(*) CRITICAL BRIDGE CLEARANCE
 STA. 3+850.127
 CLEARANCE = 4.96 m
 (SEE SHT. 193 FOR BRIDGE CLEARANCE)

2.85 m - ITEM 608: 100 mm CONCRETE WALK

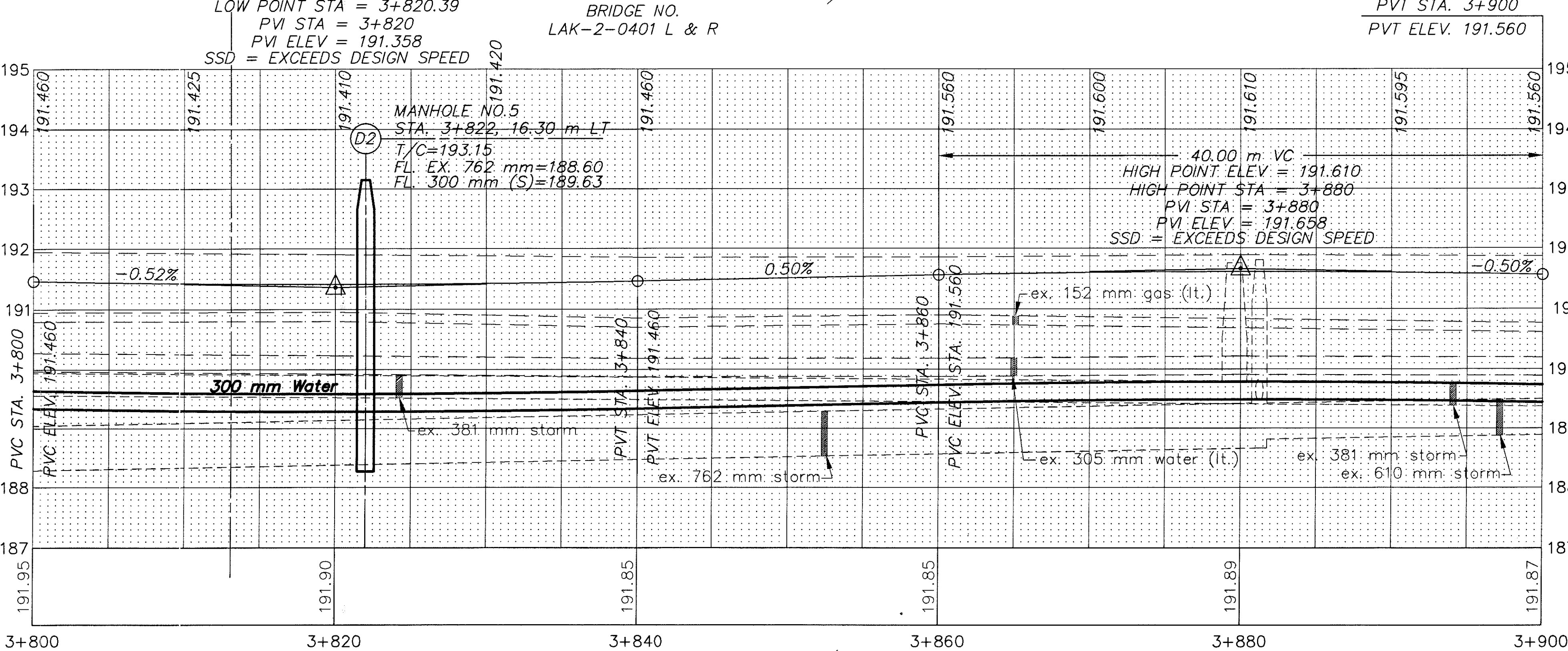
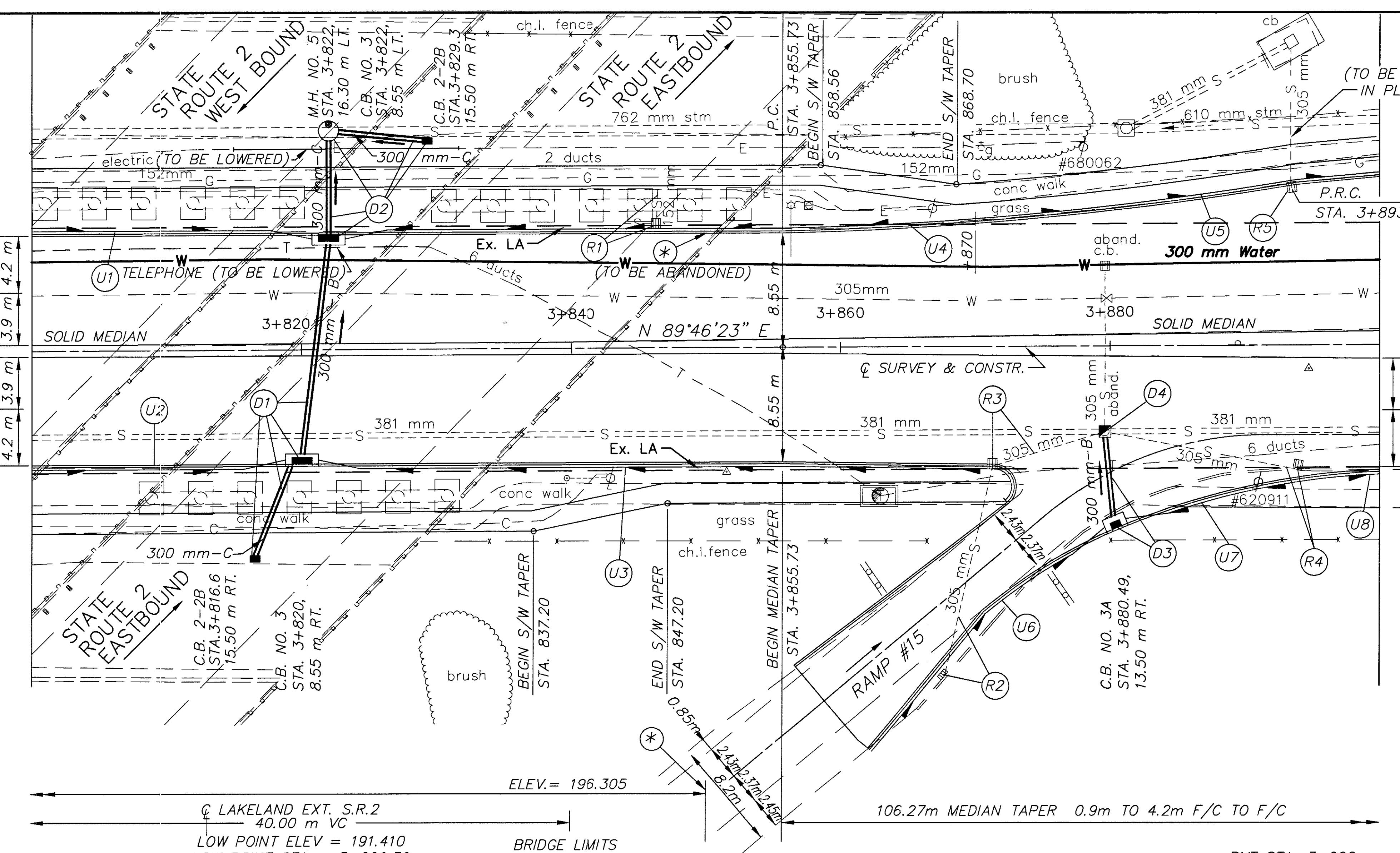
BENCH MARK: ELEV. 192.195
 STA. 3+856.71, OFFSET 10.38 m LT.
 S.E. BASE BOLT
 ROUTE 2 WEST SIGN

(*) 707.41 NON-PERFORATED,
 ASTM D-3034 SDR 35,
 707.33 OR 707.42

UNDERDRAINS						
REFERENCE NUMBER	STATION		SIDE	603		BENDS AND BRANCHES FOR INFORMATION ONLY 150 mm X 45°
				150 mm CONDUIT, TYPE F (*)	150 mm SHALLOW PIPE UNDERDRAIN WITH FABRIC WRAP	
	FROM ELEV.	TO ELEV.		METER	METER	
U1	3+800	3+822	L	3	19	1
	190.175	190.125				
U2	3+800	3+820	R	3	17	1
	190.175	190.125				
U3	3+820	3+872	R	3	52	1
	190.125	190.345				
U4	3+822	3+870	L	3	45	1
	190.125	190.31				
U5	3+870	3+900	L	3	30	
	190.31	190.205				
U6	3+86.2	3+880.15	R	3	22	1
	190.195	190.015				
U7	3+880.5	3+895	R	3	12	1
	190.015	190.28				
U8	3+89.5	3+900	R	3	5	
	190.28	190.275				
TOTALS CARRIED TO SHEET 76				18	202	6

MATCH LINE STA. 3+800

MATCH LINE STA. 3+900



CALC. BY: _____ CHECKED BY: _____
 PLAN AND PROFILE SHEET
 STA. 3+800 TO STA. 3+900 S.R. 640
 LAK-640-3.444
 73/214