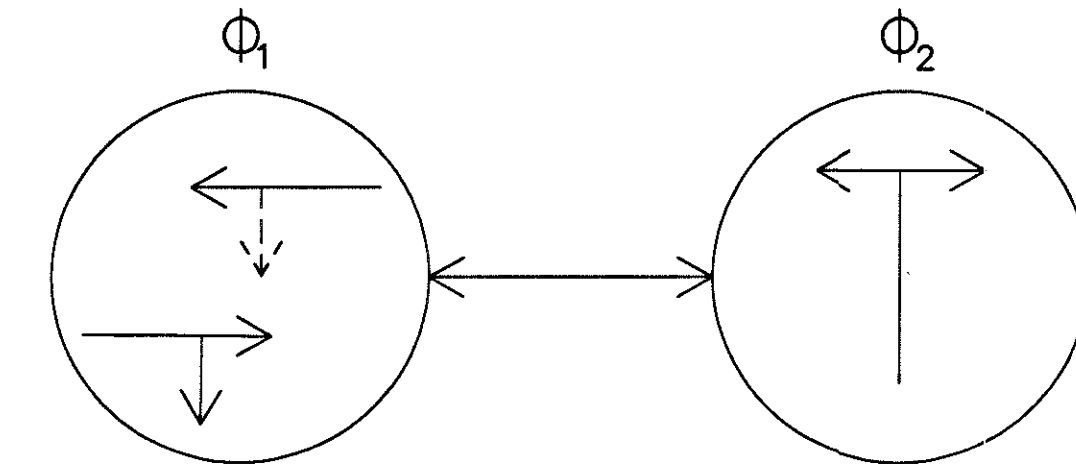


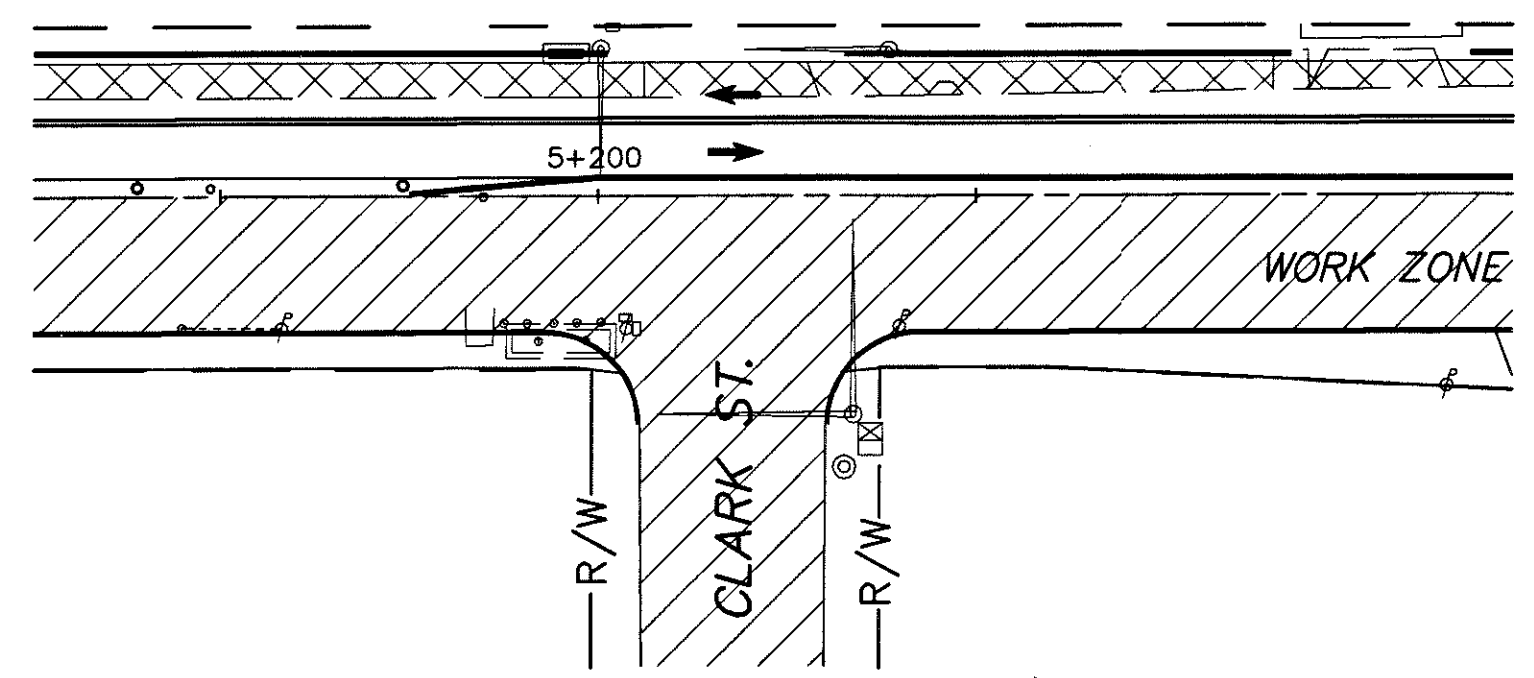
- NOTES:
- ALL EXISTING SIGNALS NOT IN USE IN EACH PHASE SHALL BE COVERED IN THE MANNER DESCRIBED IN 632.24
 - INSTALL TWO SIGNALS AND CABLE ON EXISTING MAST ARM
 - POWER SUPPLIED FROM EXISTING CONTROLLER
 - ALL SIGNALS TO BE COVERED IN PHASE I



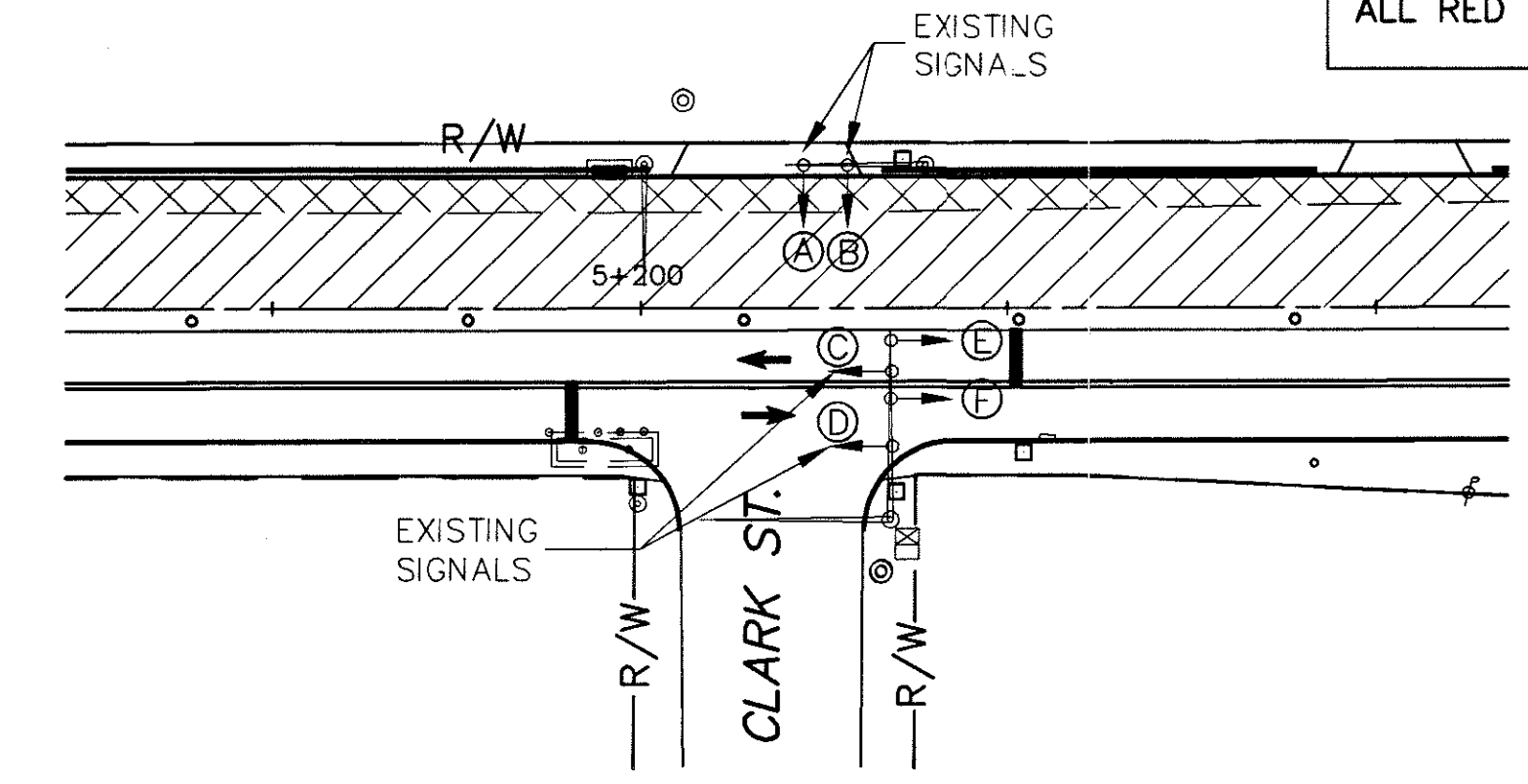
PHASING DIAGRAM

TIMING CHART

TRAFFIC SIGNAL INTERVAL	Φ ₁	Φ ₂
VEHICLE MAXIMUM	60	15
VEHICLE GREEN	60	15
MINIMUM YELLOW VEHICLE CLEARANCE	3	3
ALL RED VEHICLE CLEARANCE	2	2



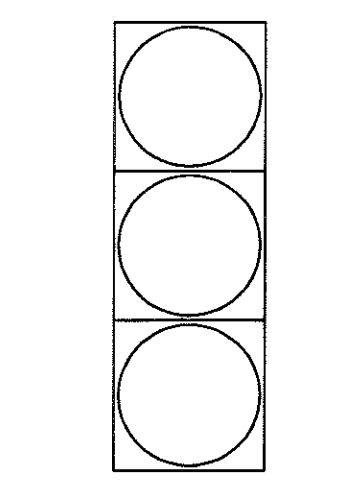
CLARK STREET PHASE I CONSTRUCTION
 * ALL EXISTING SIGNALS TO BE COVERED



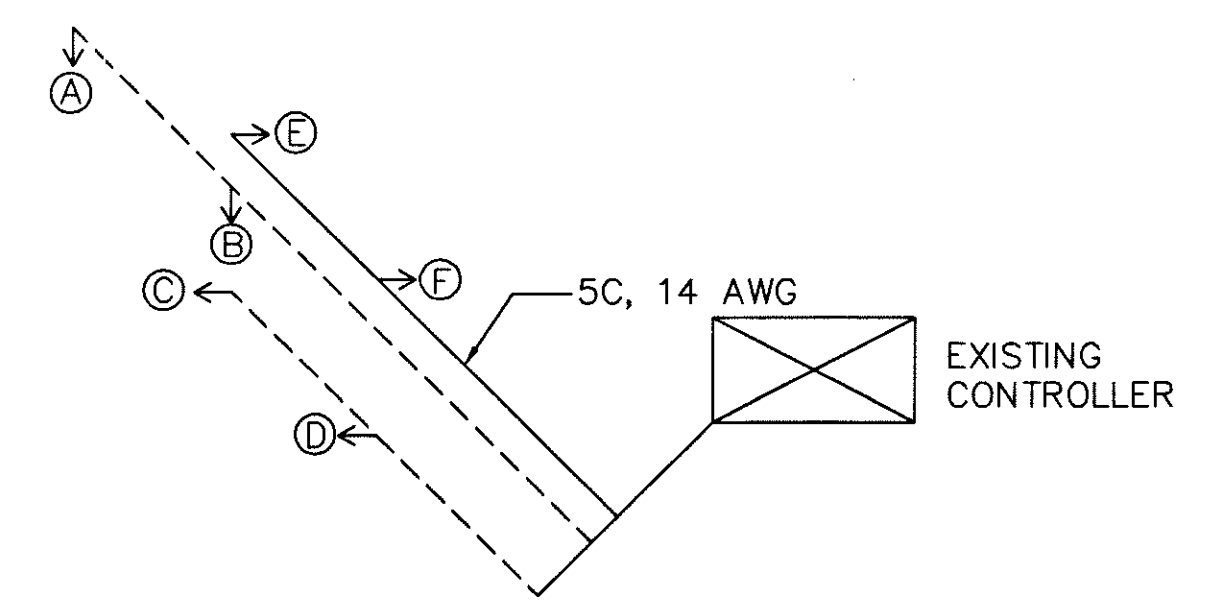
CLARK STREET PHASE II CONSTRUCTION

SUMMARY OF TEMPORARY SIGNAL QUANTITIES

ITEM	TOTAL	UNIT	DESCRIPTION
632	2	EA.	VEHICULAR SIGNAL HEADS, 3 SECTIONS, 300mm LENS, 1 WAY
632	21.5	METER	SIGNAL CABLE, 5 CONDUCTORS, NO HANG.



E, F
 SIGNAL HEADS



WIRING SCHEME
 *SIGNALS A, B, C, D ARE EXISTING