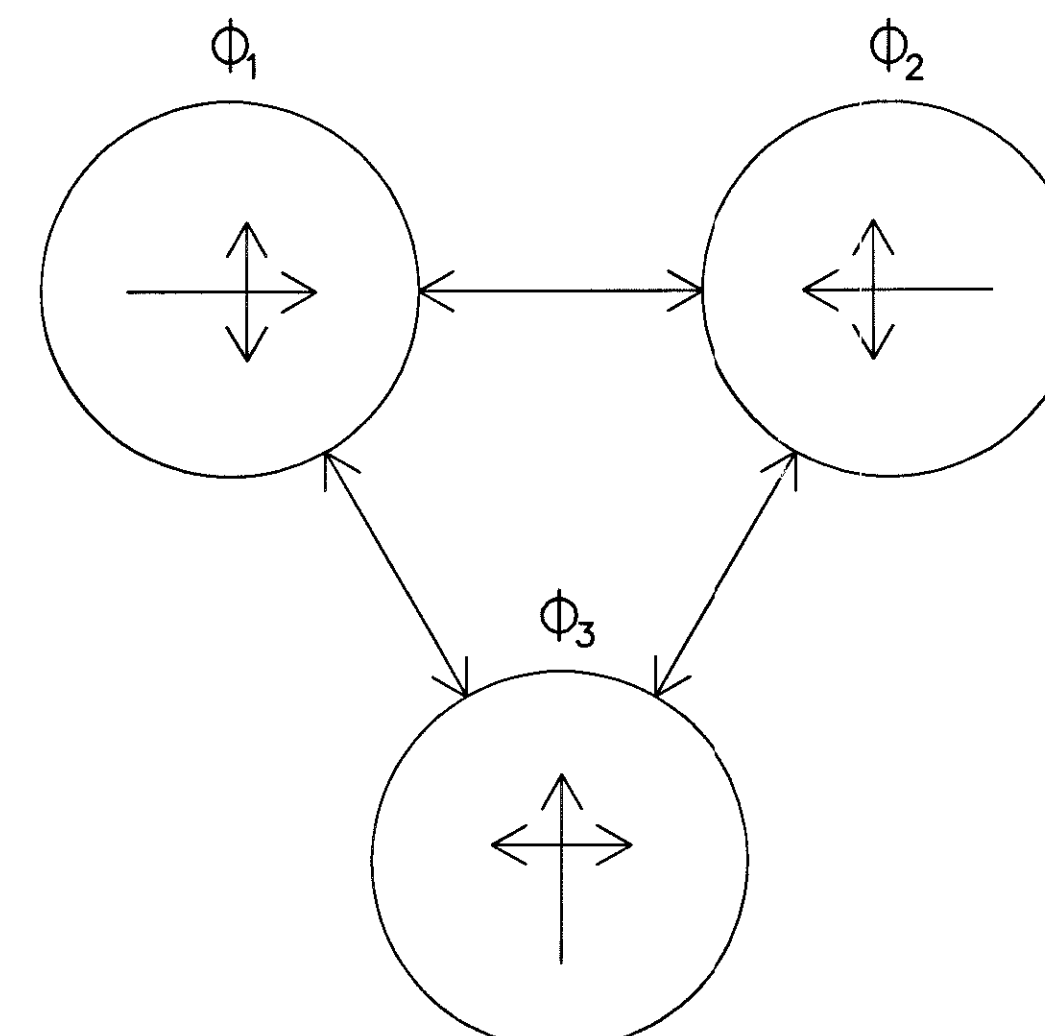


PHASING DIAGRAM

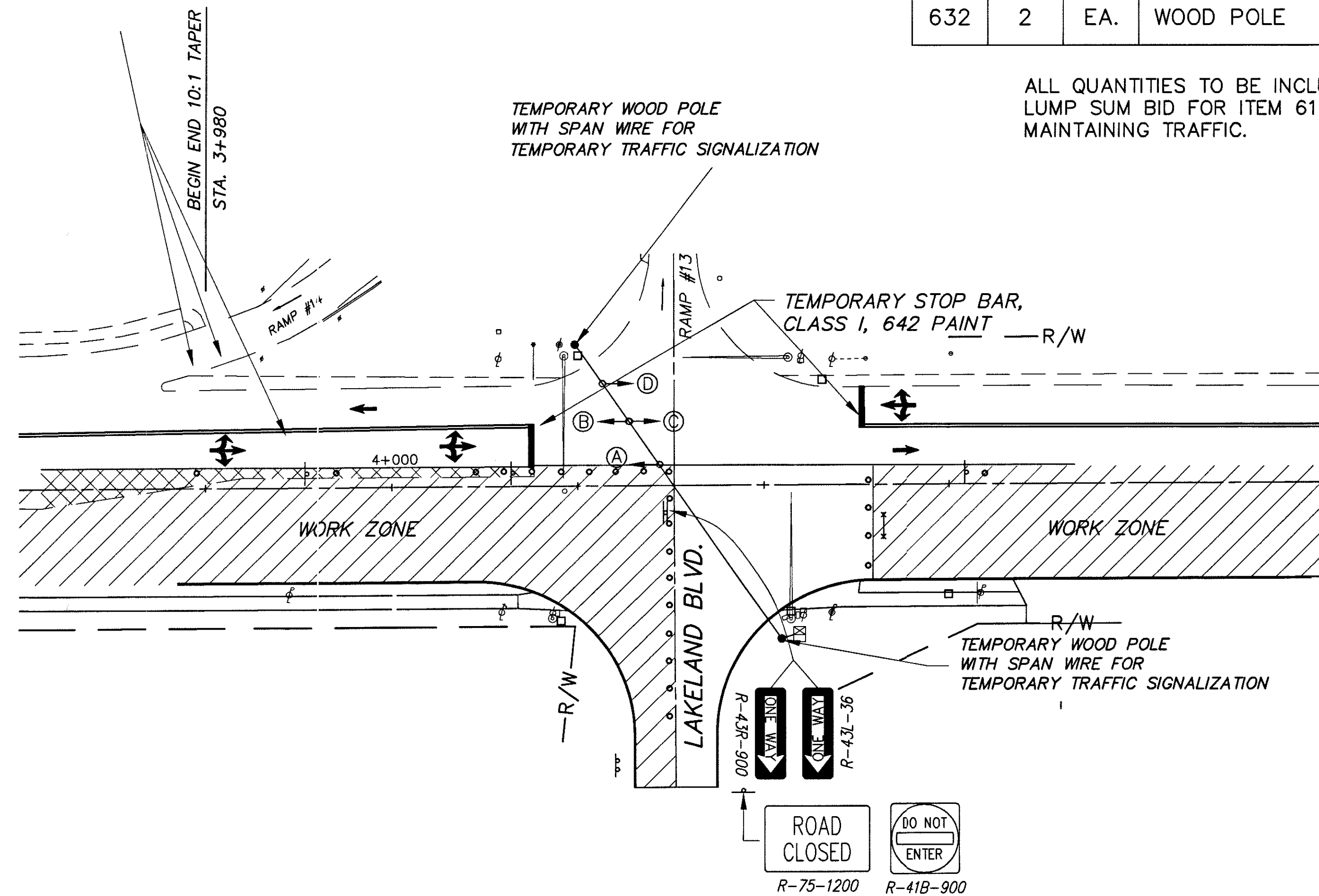
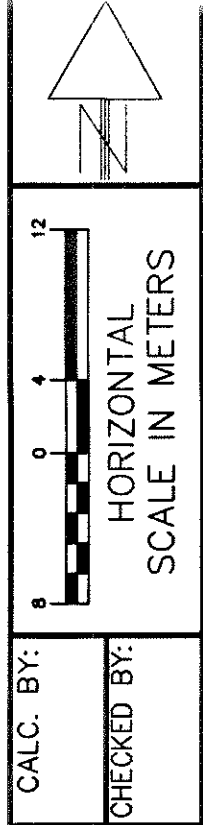
SUMMARY OF TEMPORARY SIGNAL QUANTITIES			
ITEM	TOTAL	UNIT	DESCRIPTION
625	2	METER	CONDUIT, 51mm, 713.04
625	2	METER	TRENCH
632	3	EA.	VEHICULAR SIGNAL HEADS, 3 SECTIONS, 300mm LENS, 1 WAY
632	3	EA.	VEHICULAR SIGNAL HEADS, 4 SECTIONS, 300mm LENS, 1 WAY
632	101	METER	SIGNAL CABLE, 5 CONDUCTORS, NO. 14 AWG.
632	2	EA.	WOOD POLE

ALL QUANTITIES TO BE INCLUDED IN LUMP SUM BID FOR ITEM 614, MAINTAINING TRAFFIC.

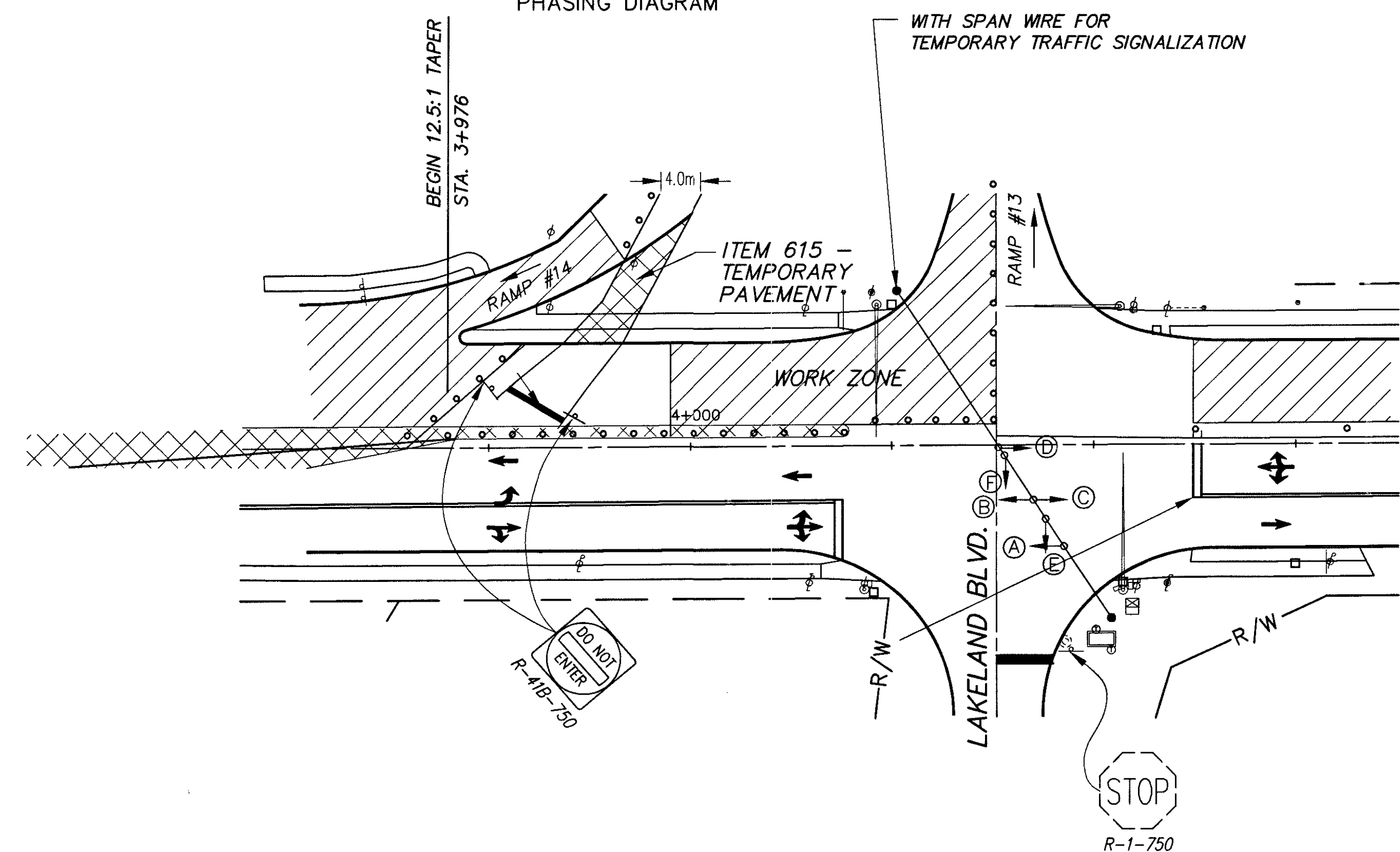


PHASING DIAGRAM

- NOTES:
- ALL EXISTING SIGNALS NOT IN USE IN EACH PHASE SHALL BE COVERED IN THE MANNER DESCRIBED IN 632.24
 - PROVIDE AND INSTALL TEMPORARY SIGNALS, CONDUIT, CABLE AND WOOD POLES
 - POWER SUPPLIED FROM EXISTING CONTROLLER



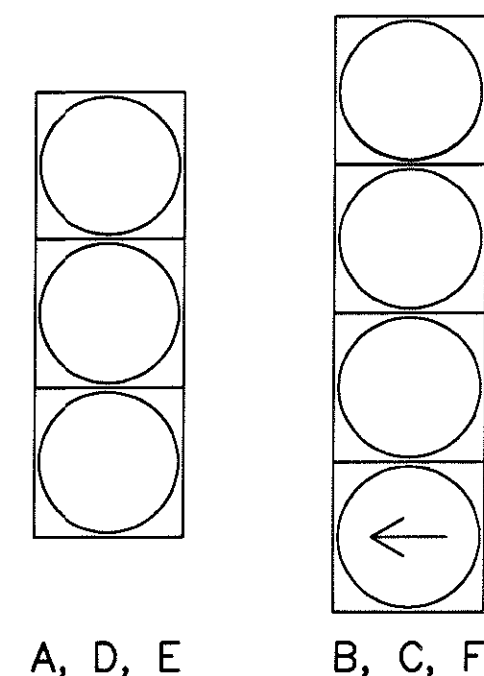
LAKELAND BOULEVARD PHASE I CONSTRUCTION



LAKELAND BOULEVARD PHASE II CONSTRUCTION

TIMING CHART

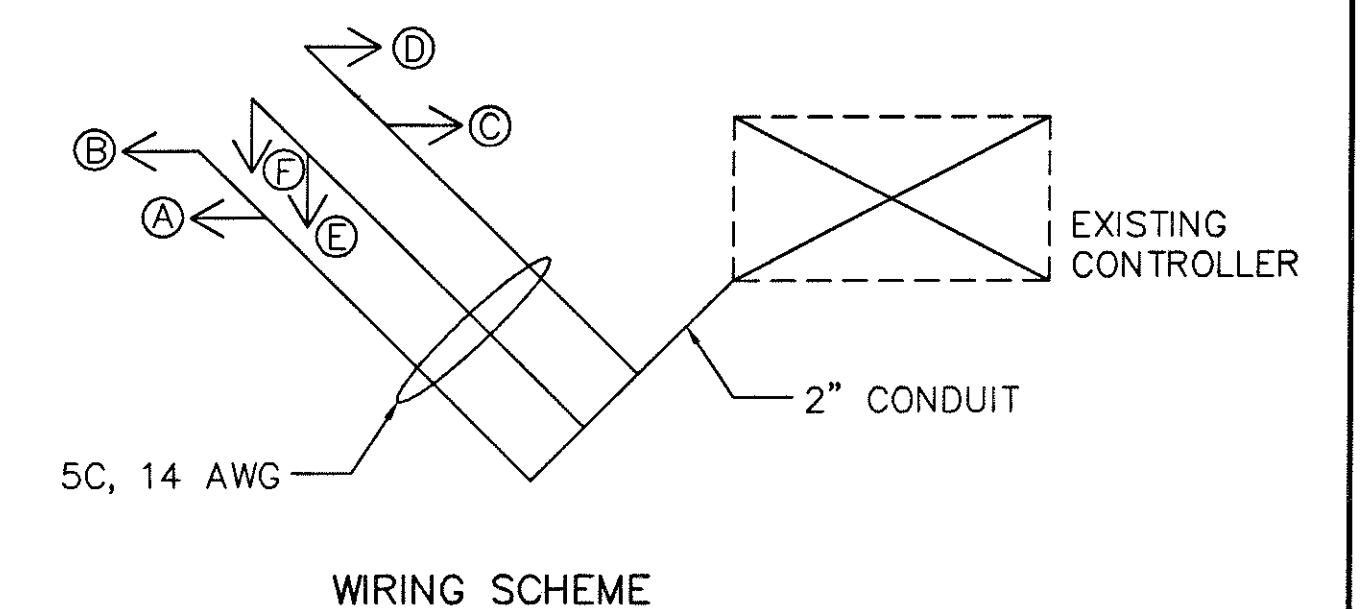
TRAFFIC SIGNAL INTERVAL	Φ ₁	Φ ₂
VEHICLE MAXIMUM	30	30
VEHICLE GREEN	30	30
MINIMUM YELLOW VEHICLE CLEARANCE	3	3
ALL RED VEHICLE CLEARANCE	2	2



SIGNAL HEADS

TIMING CHART

TRAFFIC SIGNAL INTERVAL	Φ ₁	Φ ₂	Φ ₃
VEHICLE MAXIMUM	30	30	15
VEHICLE GREEN	30	30	15
MINIMUM YELLOW VEHICLE CLEARANCE	3	3	3
ALL RED VEHICLE CLEARANCE	2	2	2



WIRING SCHEME

LAKELAND BOULEVARD
TEMPORARY SIGNALIZATION

LAK-640-3.444

50A
214