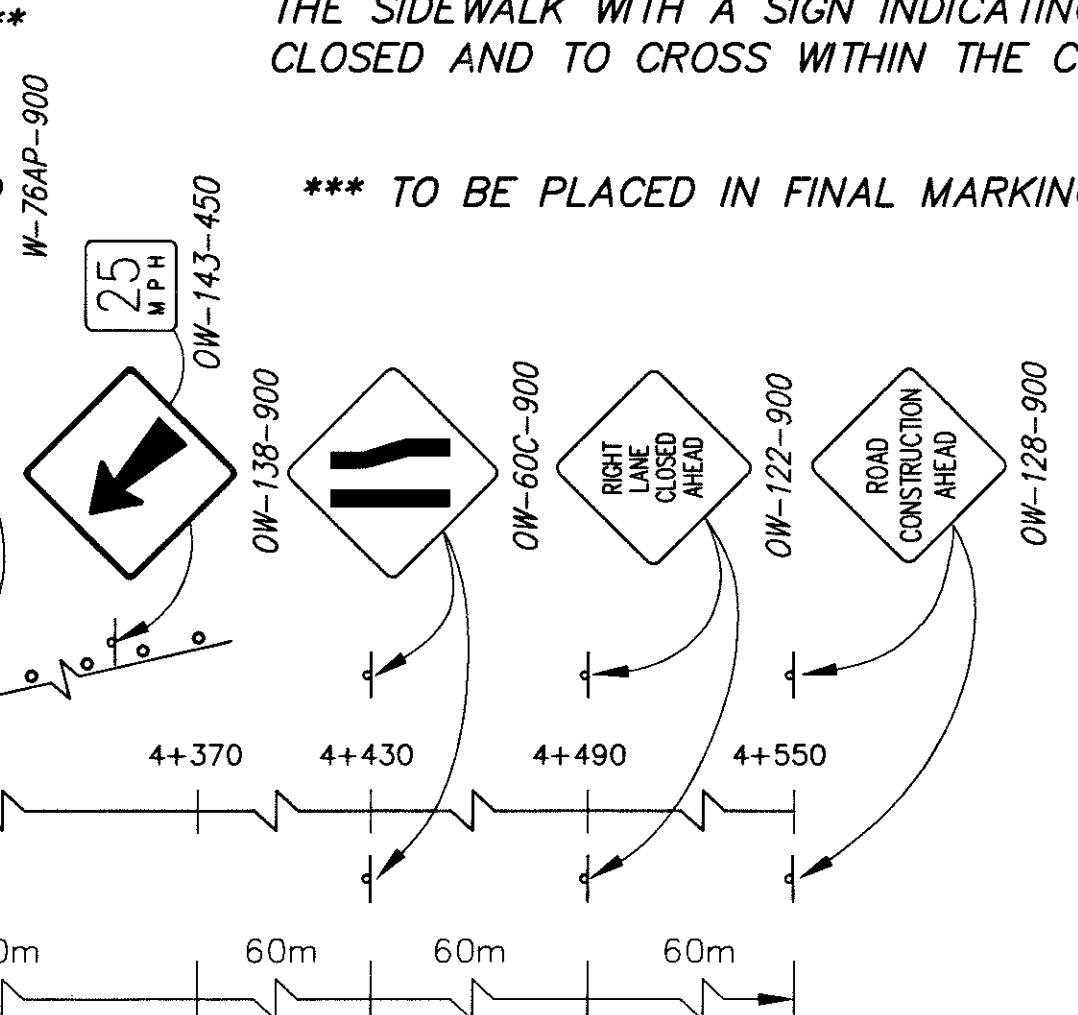


- TEMPORARY WHITE EDGE LINE, CLASS I, 740.06, TYPE I
- NOTES:
- BARRELS SHALL BE SPACED OUT ALONG ROADWAY AT 15m ON CENTER EXCEPT FOR TAPERS AND CLOSED INTERSECTIONS, WHERE THE BARRELS SHALL BE SPACED AT 3m ON CENTER. BARRELS SHALL NOT PROHIBIT ACCESS TO ANY INTERSECTION OR DRIVEWAY NOT UNDER CONSTRUCTION
 - EXISTING CONFLICTING SIGNS, SIGNALS AND PAVEMENT MARKING ON VINE STREET SHALL BE COVERED (SIGNS AND SIGNALS) OR REMOVED (PAVEMENT MARKINGS)
 - ALL INTERSECTIONS THAT ARE CLOSED DUE TO CONSTRUCTION SHALL HAVE EMERGENCY ACCESS MAINTAINED
 - MEDIAN SHALL BE COMPLETED AT THE END OF PHASE 2. SEE SHEET 34 FOR DETAILS.
 - SEE SHEET 51B FOR BEN-HUR MAINTENANCE OF TRAFFIC DETAIL

** CONTRACTOR SHALL ERECT A BARRICADE ACROSS THE SIDEWALK WITH A SIGN INDICATING SIDEWALK IS CLOSED AND TO CROSS WITHIN THE CROSSWALK.

*** TO BE PLACED IN FINAL MARKING POSITION



TEMPORARY WHITE EDGE LINE, CLASS I, 740.06, TYPE I

ITEM 615 TEMPORARY PAVEMENT IN PLACE FROM SECTION 1