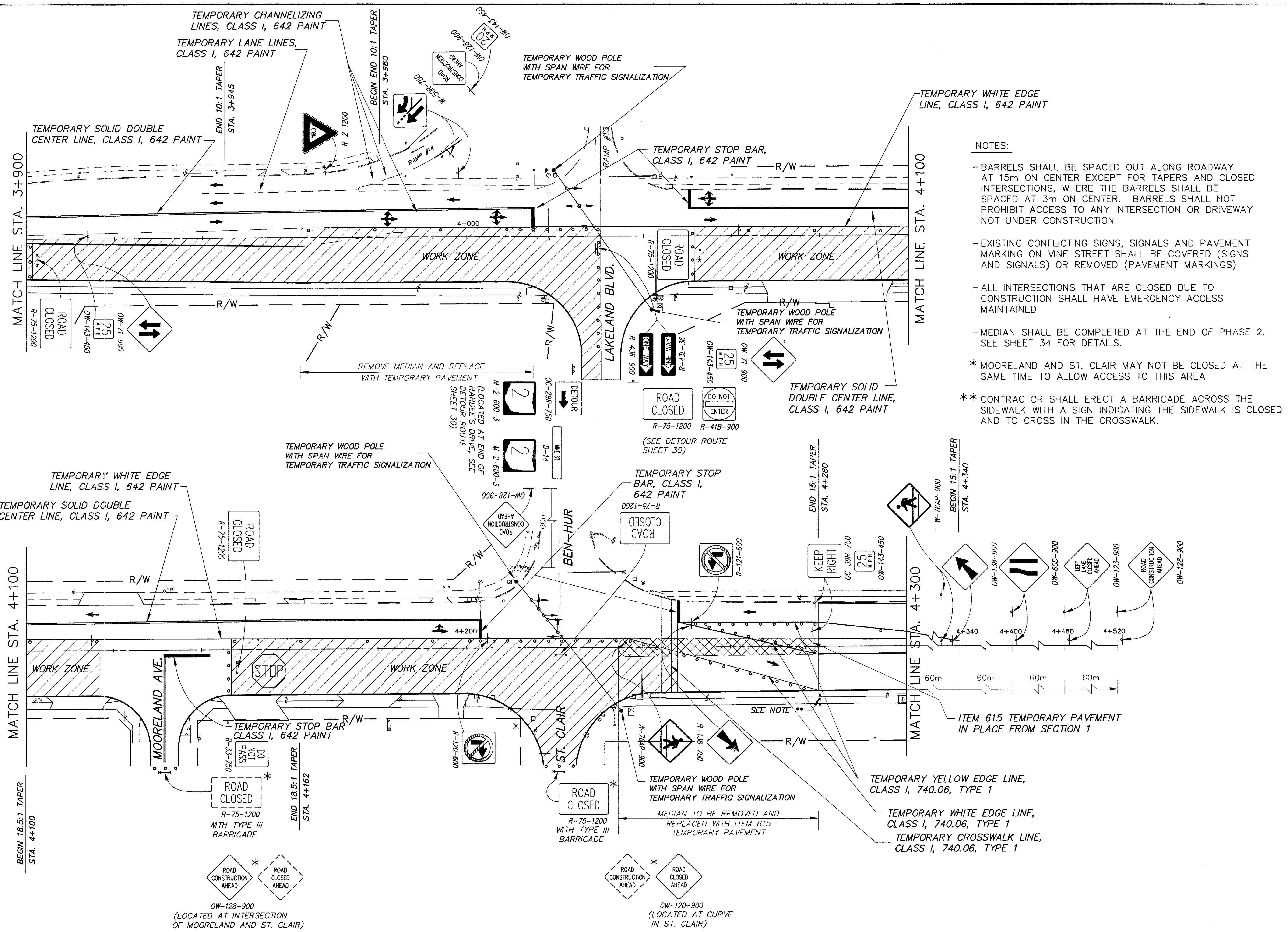


CALC. BY:
CHECKED BY:

MAINTENANCE OF TRAFFIC
SECTION 2 PHASE 1

LAK-640-3.444



- NOTES:**
- BARRELS SHALL BE SPACED OUT ALONG ROADWAY AT 15m ON CENTER EXCEPT FOR TAPERS AND CLOSED INTERSECTIONS, WHERE THE BARRELS SHALL BE SPACED AT 3m ON CENTER. BARRELS SHALL NOT PROHIBIT ACCESS TO ANY INTERSECTION OR DRIVEWAY NOT UNDER CONSTRUCTION
 - EXISTING CONFLICTING SIGNS, SIGNALS AND PAVEMENT MARKING ON VINE STREET SHALL BE COVERED (SIGNS AND SIGNALS) OR REMOVED (PAVEMENT MARKINGS)
 - ALL INTERSECTIONS THAT ARE CLOSED DUE TO CONSTRUCTION SHALL HAVE EMERGENCY ACCESS MAINTAINED
 - MEDIAN SHALL BE COMPLETED AT THE END OF PHASE 2. SEE SHEET 34 FOR DETAILS.
 - * MOORELAND AND ST. CLAIR MAY NOT BE CLOSED AT THE SAME TIME TO ALLOW ACCESS TO THIS AREA
 - ** CONTRACTOR SHALL ERECT A BARRICADE ACROSS THE SIDEWALK WITH A SIGN INDICATING THE SIDEWALK IS CLOSED AND TO CROSS IN THE CROSSWALK.

ITEM 615 TEMPORARY PAVEMENT IN PLACE FROM SECTION 1

OW-128-900
(LOCATED AT INTERSECTION OF MOORELAND AND ST. CLAIR)

OW-120-900
(LOCATED AT CURVE IN ST. CLAIR)