

TEMPORARY DOUBLE SOLID CENTER LINE, CLASS I, 740.06, TYPE I

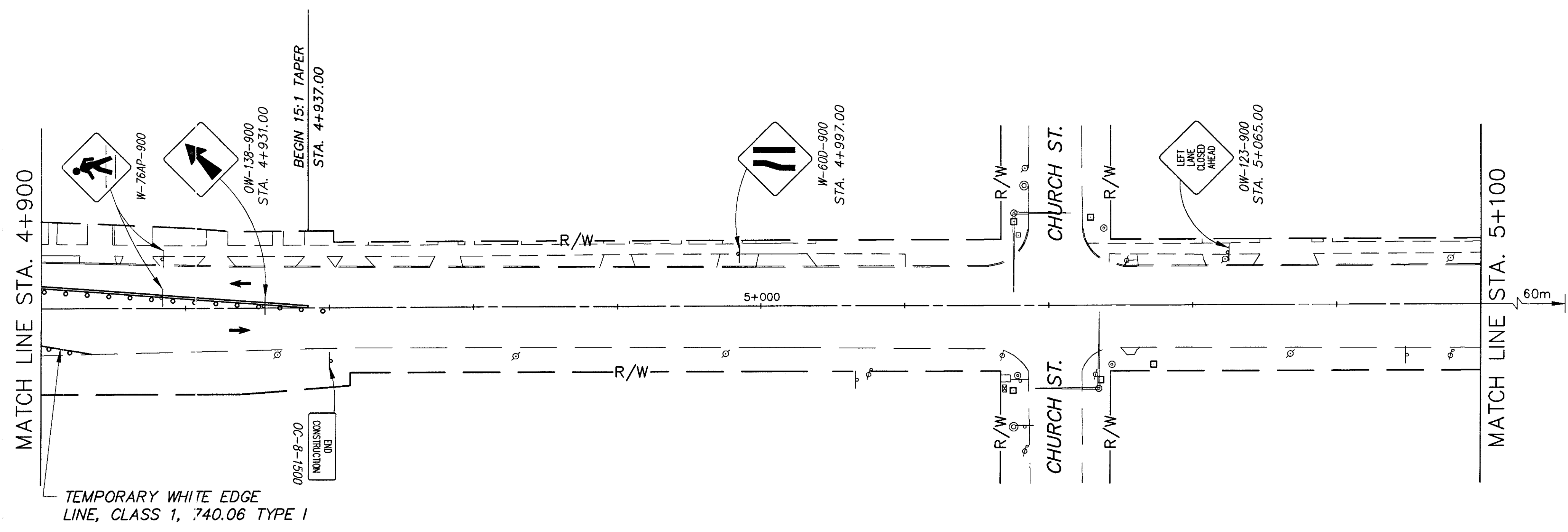
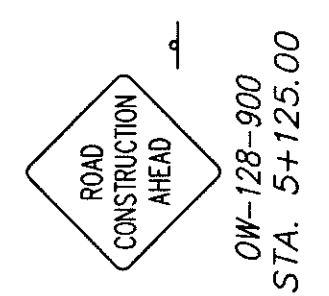
TEMPORARY WHITE EDGE LINE CLASS 1, 740.06, TYPE I

CONTRACTOR TO TAPER BACK TO EXISTING EDGE OF PAVEMENT WITH TEMPORARY PAVEMENT SEE DETAIL SHEET 51

NOTES:

- BARRELS SHALL BE SPACED OUT ALONG ROADWAY AT 15m ON CENTER EXCEPT FOR TAPERS AND CLOSED INTERSECTIONS, WHERE THE BARRELS SHALL BE SPACED AT 3m ON CENTER. BARRELS SHALL NOT PROHIBIT ACCESS TO ANY INTERSECTION OR DRIVEWAY NOT UNDER CONSTRUCTION
- EXISTING CONFLICTING SIGNS, SIGNALS AND PAVEMENT MARKING ON VINE STREET SHALL BE COVERED (SIGNS AND SIGNALS) OR REMOVED (PAVEMENT MARKINGS)
- ALL INTERSECTIONS THAT ARE CLOSED DUE TO CONSTRUCTION SHALL HAVE EMERGENCY ACCESS MAINTAINED
- MEDIAN SHALL BE COMPLETED AT THE END OF PHASE 2. SEE SHEET 32 FOR DETAILS.
- SEE SHEET 51B FOR SKIFF ROAD INTERSECTION DETAIL.

** CONTRACTOR TO ERECT A BARRICADE ACROSS THE SIDEWALK WITH A SIGN INDICATING THE SIDEWALK IS CLOSED AND TO CROSS IN THE CROSSWALK.



MAINTENANCE OF TRAFFIC SECTION 1 - PHASE 1

LAK-640-3.444