

SEE SHEET 92 FOR ESTIMATED DRAINAGE QUANTITIES.  
 SEE SHEET 201 FOR WATERWORK QUANTITIES.  
 SEE SHEETS 131, 134 FOR CATCH BASIN CROSSOVER PROFILES.  
 SEE SHEET 61 FOR DRIVEWAY QUANTITIES.  
 SEE SHEET 201 FOR UTILITY RELOCATION  
 SEE SHEET 60 FOR CONNECTION SCHEDULE  
 SEE SHEET 56 FOR ITEM 202-FENCE REMOVED FOR STORAGE, A.P.P.  
 SEE SHEET 183A FOR DRAINAGE DETAILS

**LEGEND**

- W --- EX. WATER LINE
- SAN --- EX. SANITARY LINE
- G --- EX. GAS LINE
- S --- EX. STORM LINE
- T --- EX. TELEPHONE LINE

BENCH MARK: ELEV. 195.127  
 STA. 4+910.40, OFFSET 6.82 m RT.  
 HYDRANT  
 TOP STEM

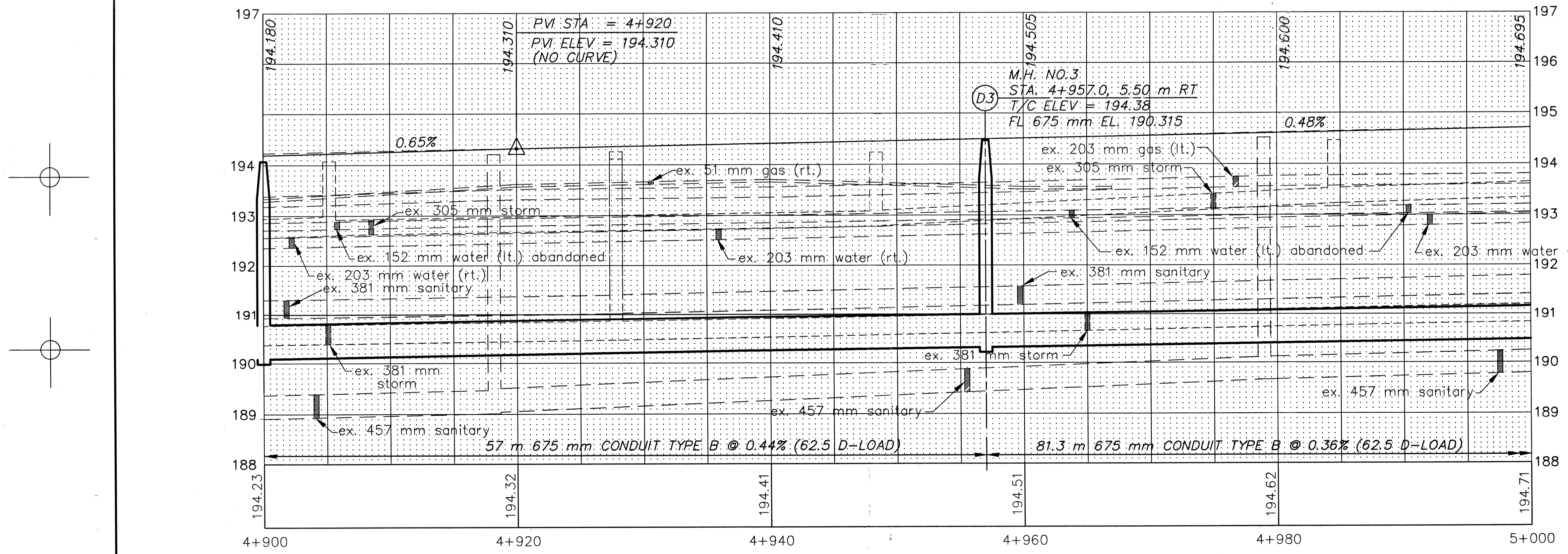
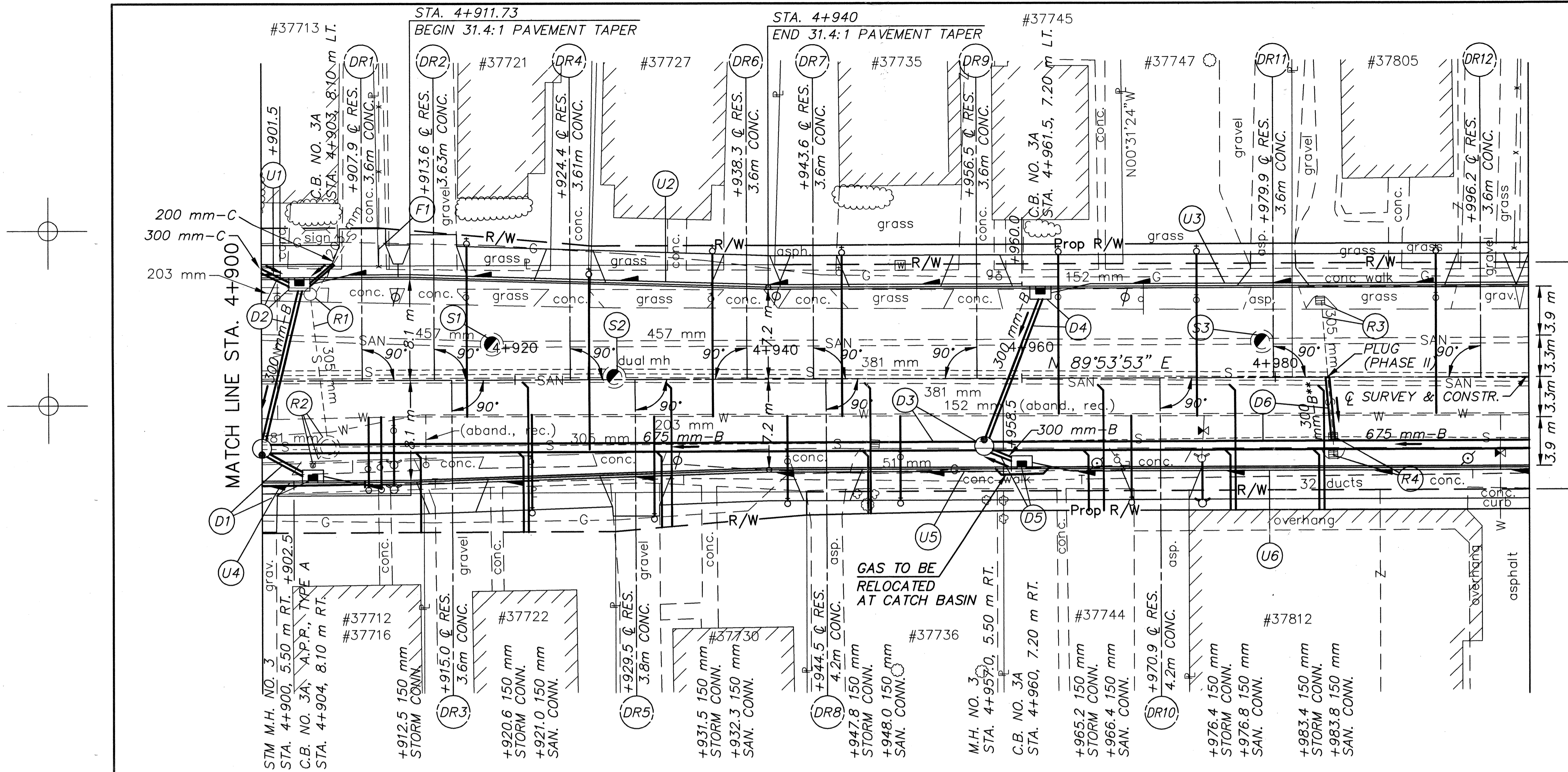
BENCH MARK: ELEV. 195.444  
 STA. 4+974.14, OFFSET 6.54 m RT.  
 HYDRANT  
 TOP STEM

(\* ) 707.41 NON-PERFORATED,  
 ASTM D-3034 SDR 35,  
 707.33 OR 707.42

\*\* PIPE TO BE INSTALLED TO MAINTAIN POSITIVE  
 DRAINAGE FROM THE NORTH SIDE OF VINE ST.  
 DURING PHASE I CONSTRUCTION. PIPE SHALL  
 BE ABANDONED BY PLUGGING DURING PHASE II  
 CONSTRUCTION.

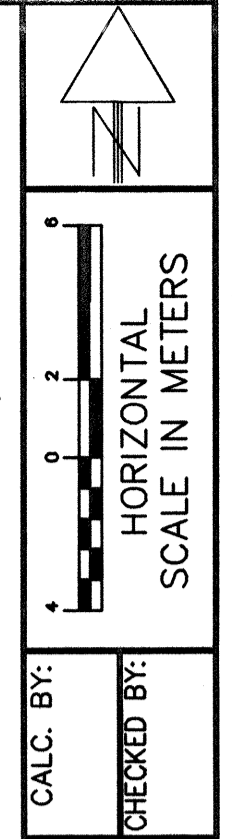
**UNDERDRAINS**

REFERENCE NUMBER	STATION		SIDE	CONDUIT		BENDS AND BRANCHES FOR INFORMATION ONLY 150 mm X 45°
	FROM	TO		150 mm CONDUIT, TYPE F (*)	150 mm SHALLOW PIPE UNDERDRAIN WITH FABRIC WRAP	
	E ELEV.	E ELEV.		METER	METER	
U1	4+900	4+901.5	L		1.5	
	192.895	192.920				
U2	4+903	4+960	L	3	54.0	1
	192.940	193.235				
U3	4+961.5	5+000	L	3	35.5	1
	193.230	193.430				
U4	4+900	4+902.5	R		2.5	
	192.895	192.910				
U5	4+904	4+958.5	R	3	51.5	1
	192.920	193.230				
U6	4+960	5+000	R	3	37	1
	193.235	193.430				
TOTALS CARRIED TO SHEET 92				12	182	4



MATCH LINE STA. 5+000

MATCH LINE STA. 4+900



PLAN AND PROFILE SHEET  
 STA. 4+900 TO STA. 5+000 S.R. 640

LAK-640-3.444