

SEE SHEET 169 FOR BEN-HUR ROAD EXTRA AREA  
 SEE SHEET 167 FOR ST. CLAIR ROAD EXTRA AREA  
 SEE SHEETS 117, 119, 181 FOR CATCH BASIN CROSS-OVERS  
 SEE SHEET 197 FOR WATER WORK QUANTITIES  
 SEE SHEET 60 FOR STORM CONNECTION QUANTITIES  
 SEE SHEET 79 FOR ESTIMATED DRAINAGE QUANTITIES  
 SEE SHEET 197 FOR UTILITY RELOCATIONS

\*\* PIPE TO BE INSTALLED TO MAINTAIN POSITIVE DRAINAGE DURING PHASE I CONSTRUCTION. THIS PIPE SHALL BE REMOVED AND THE CATCH BASIN BULKHEADED DURING PHASE II CONSTRUCTION.

**LEGEND**

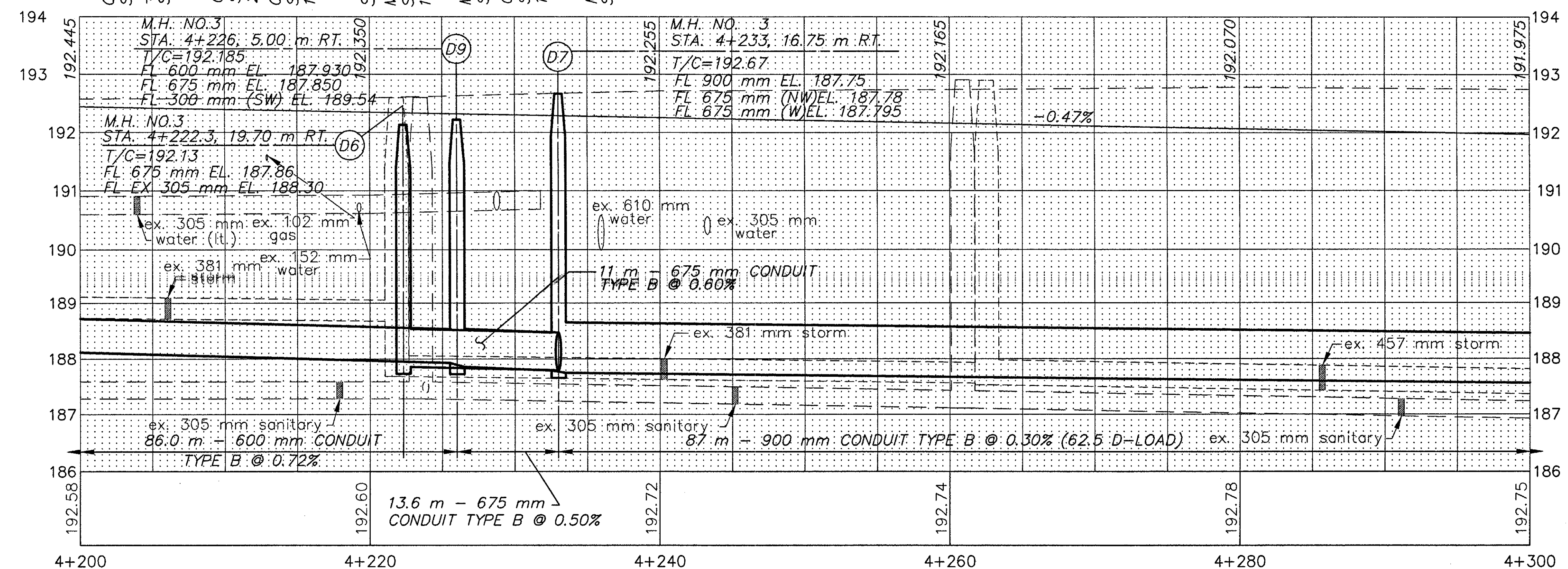
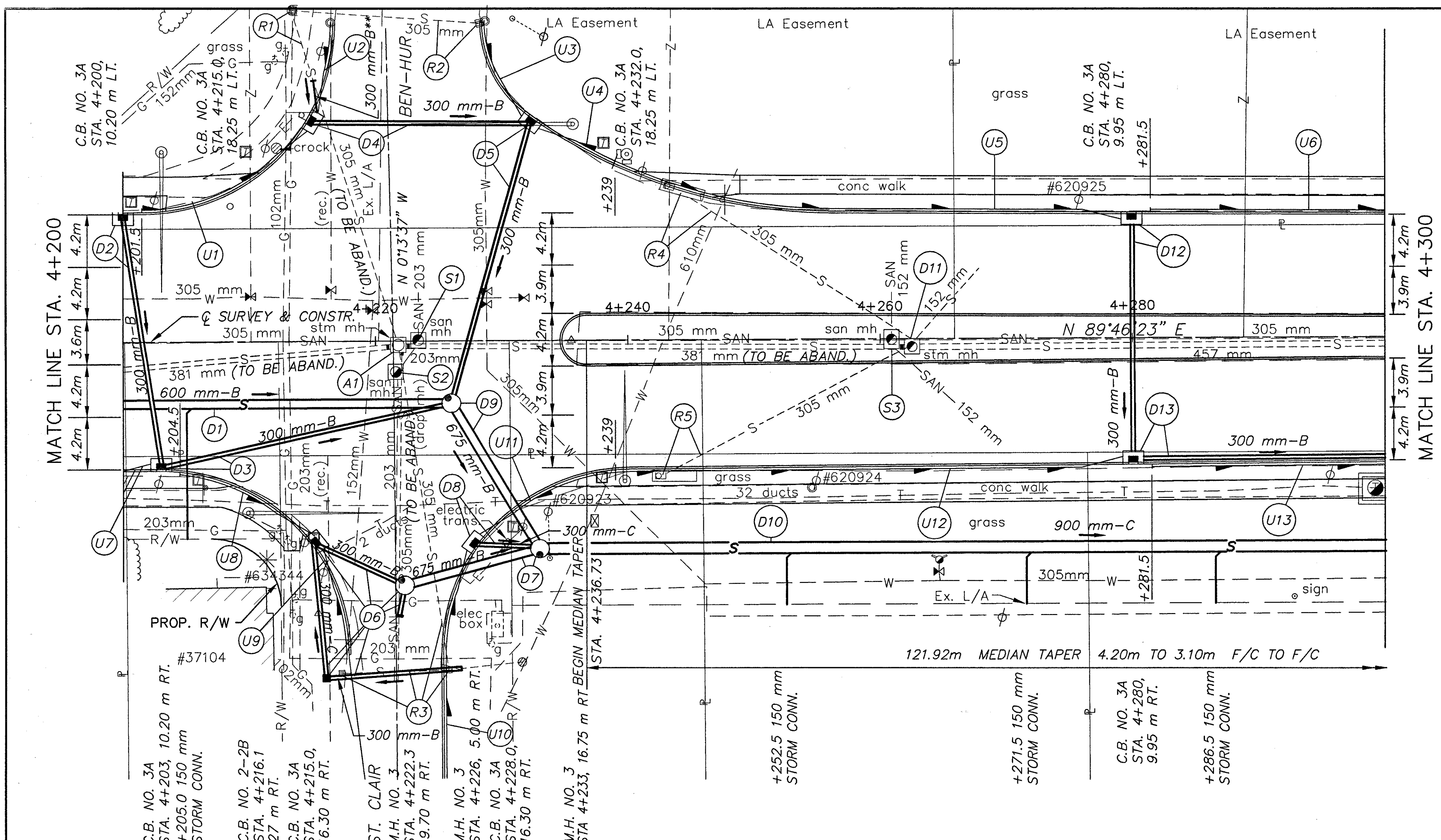
- W --- EX. WATER LINE
- SAN --- EX. SANITARY LINE
- G --- EX. GAS LINE
- S --- EX. STORM LINE
- T ---

BENCH MARK: ELEV. 193.519  
 STA. 4+240.0, OFFSET 36.6 m LT.  
 HYDRANT  
 TOP STEM

(\* ) 707.41 NON-PERFORATED,  
 ASTM D-3034 SDR 35,  
 707.33 OR 707.42

**UNDERDRAINS**

REFERENCE NUMBER	STATION		SIDE	603		BENDS AND BRANCHES FOR INFORMATION ONLY
	FROM	TO		150 mm CONDUIT, TYPE F (*)	605	
	E ELEV.	E ELEV.				
U1	4+201.5	4+215	L	3	14.6	1
	191.105	190.975				
U2	4+215	4+219.6	L	3	16.4	1
	190.975	191.37				
U3	4+229.9	4+232	L	3	11.1	1
	191.305	190.87				
U4	4+232	4+239	L	3	3.7	1
	190.87	190.940				
U5	4+239	4+280	L	3	38.8	1
	190.940	190.785				
U6	4+281.5	4+300	L	3	18.5	
	190.775	190.69				
U7	4+200	4+203	R	3		
	191.115	191.085				
U8	4+204.5	4+215	R	3	13.7	1
	191.015	190.800				
U9	4+215	4+217.7	R	3	6.4	1
	190.890	191.050				
U10	4+225.4	4+228	R	3	21.7	1
	191.24	190.90				
U11	4+228	4+239	R	3	9.5	1
	190.90	191.965				
U12	4+239	4+280	R	3	38	1
	190.965	190.785				
U13	4+281.5	4+300	R	3	18.5	
	190.775	190.69				
TOTALS CARRIED TO SHEET 79				33	210.9	10



PLAN AND PROFILE SHEET  
 STA. 4+200 TO STA. 4+300 S.R. 640  
 LAK-640-3.444  
 78/214