

SEE SHEET 165 FOR MOORELAND AVE. EXTRA AREA
 SEE SHEETS 114, 115, 181, 182 FOR CATCH BASIN CROSS-OVERS
 SEE SHEET 197 FOR WATER WORK QUANTITIES
 SEE SHEET 60 FOR STORM CONNECTION QUANTITIES
 SEE SHEET 61 FOR DRIVE QUANTITIES
 SEE SHEET 79 FOR ESTIMATED DRAINAGE QUANTITIES
 SEE SHEET 197 FOR UTILITY RELOCATION

** PIPE TO BE INSTALLED TO MAINTAIN POSITIVE DRAINAGE FROM EXIST. INLET BASIN ON NORTH SIDE OF VINE ST. DURING PHASE I CONSTRUCTION THIS PIPE SHALL BE ABANDONED BY PLUGGING DURING PHASE II CONSTRUCTION.

LEGEND

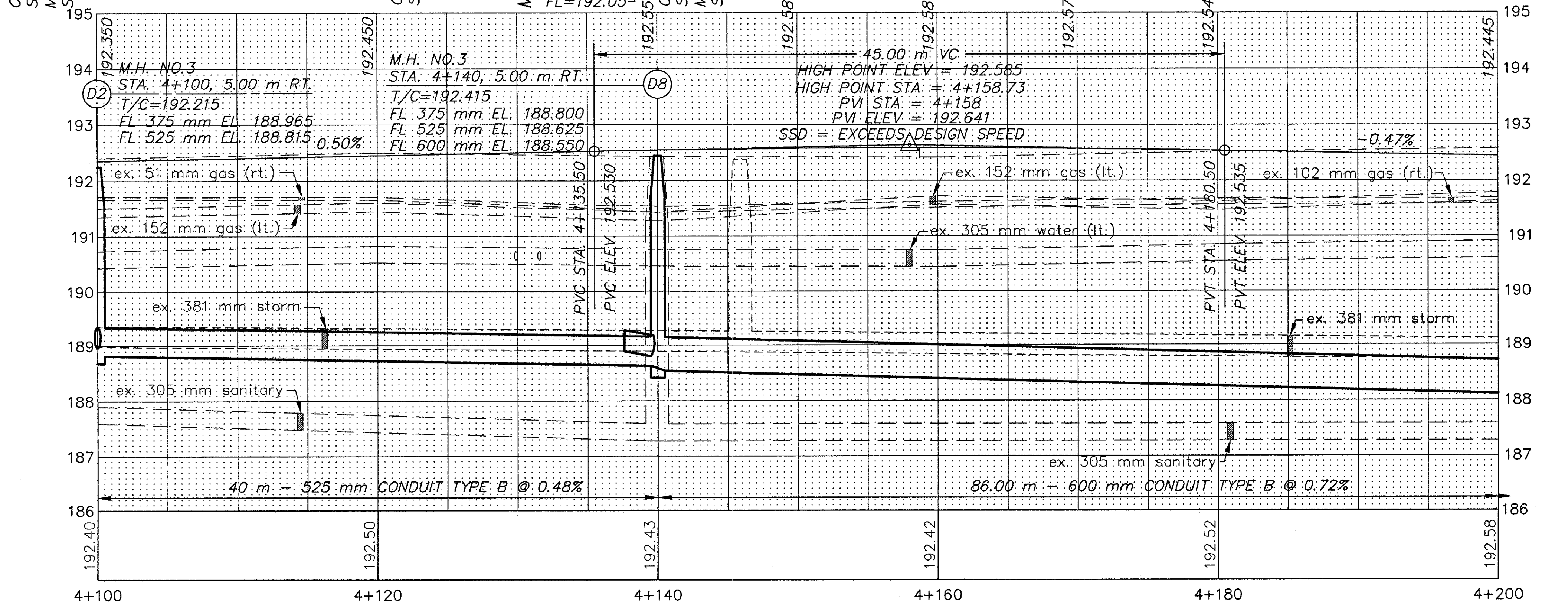
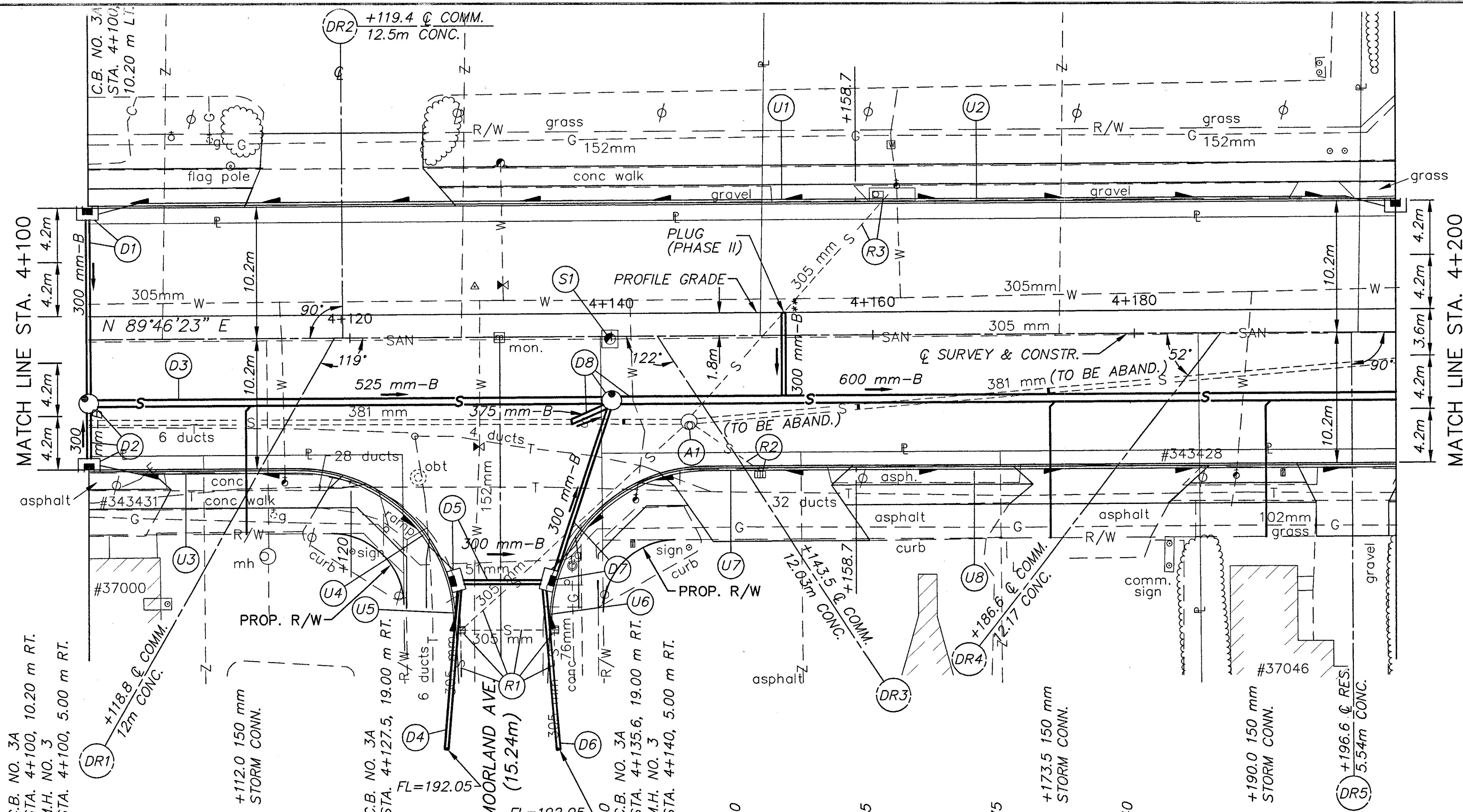
- W --- EX. WATER LINE
- SAN --- EX. SANITARY LINE
- G --- EX. GAS LINE
- S --- EX. STORM LINE
- T --- EX. TELEPHONE LINE
- C --- EX. CABLE LINE

BENCH MARK: ELEV. 193.237
 STA. 4+131.61, OFFSET 13.52 m LT.
 HYDRANT #372
 TOP STEM

(*) 707.41 NON-PERFORATED,
 ASTM D-3034 SDR 35,
 707.33 OR 707.42

UNDERDRAINS

REFERENCE NUMBER	STATION		SIDE	CONDUIT		BENDS AND BRANCHES FOR INFORMATION ONLY 150 mm X 45'
	FROM	TO		150 mm CONDUIT, TYPE F (*)	150 mm SHALLOW PIPE UNDERDRAIN WITH FABRIC WRAP	
	ELEV.	ELEV.		METER	METER	
U1	4+100	4+158.7	L	3	55.7	
	191.020	191.255				
U2	4+158.7	4+200	L	3	38.3	
	191.255	191.115				
U3	4+100	4+120	R	3	17.0	
	191.020	191.125				
U4	4+120	4+127.8	R	3	7.4	1
	191.125	190.995				
U5	4+127.8	4+127.8	R	3	1.5	1
	191.165	190.995				
U6	4+135.5	4+135.5	R	3	1.5	1
	191.165	190.995				
U7	4+135.5	4+158.7	R	3	23.6	1
	190.995	191.255				
U8	4+158.7	4+200	R		41.3	
	191.255	191.115				
TOTALS CARRIED TO SHEET 79				21	186.3	4



C.B. NO. 3A
 STA. 4+100, 10.20 m RT.
 M.H. NO. 3
 STA. 4+100, 5.00 m RT.

C.B. NO. 3A
 STA. 4+127.5, 19.00 m RT.
 FL=192.05

C.B. NO. 3A
 STA. 4+135.6, 19.00 m RT.
 M.H. NO. 3
 STA. 4+140, 5.00 m RT.

PROP. R/W

173.5 150 mm STORM CONN.

190.0 150 mm STORM CONN.

196.6 RES. 5.54m CONC.

MATCH LINE STA. 4+100

MATCH LINE STA. 4+200

PLAN AND PROFILE SHEET
 STA. 4+100 TO STA. 4+200 S.R.: 640
 LAK-640-3.444
 77/214