

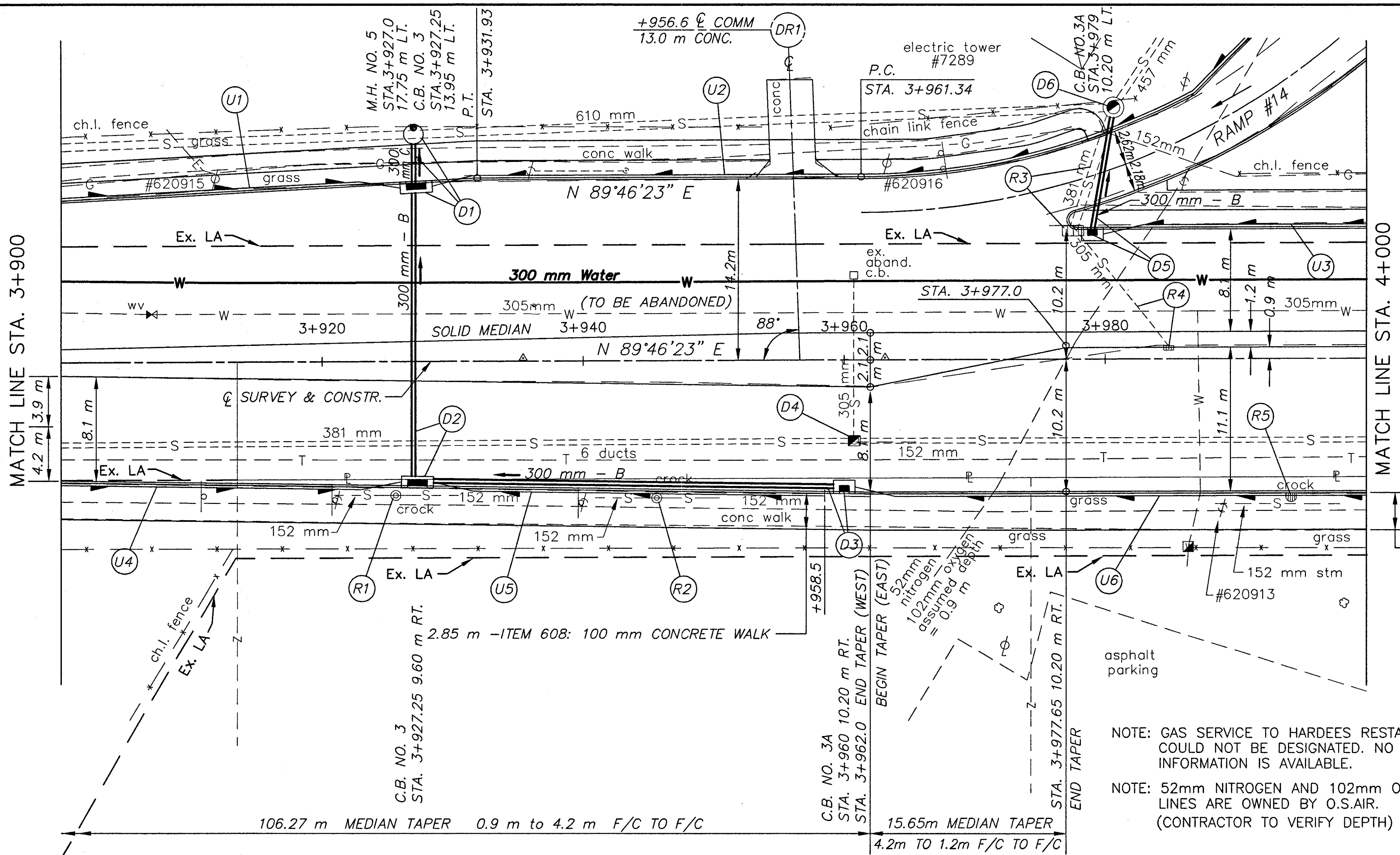
CALC. BY:
CHECKED BY:

PLAN AND PROFILE SHEET
STA. 3+900 TO STA. 4+000 S.R. 640

LAK-640-3.444

74
214

SEE SHEETS 157 FOR S.R.2 RAMP #14 EXTRA AREA
SEE SHEETS 112,181 FOR CATCH BASIN CROSS-OVERS
SEE SHEET 196 FOR WATER WORK QUANTITIES
SEE SHEET 61 FOR DRIVE QUANTITIES
SEE SHEET 76 FOR ESTIMATED DRAINAGE QUANTITIES
SEE SHEET 196 FOR UTILITY RELOCATION



LEGEND

- W --- EX. WATER LINE
- SAN --- EX. SANITARY LINE
- G --- EX. GAS LINE
- S --- EX. STORM LINE
- T --- EX. TELEPHONE LINE

BENCH MARK: ELEV. 192.195
STA. 3+856.71, OFFSET 10.38 m LT.
S.E. BASE BOLT
ROUTE 2 WEST SIGN

ITEM 608: 100 mm CONCRETE WALK

(*) 707.41 NON-PERFORATED,
ASTM D-3034 SDR 35,
707.33 OR 707.42

NOTE: GAS SERVICE TO HARDEES RESTAURANT
COULD NOT BE DESIGNATED. NO RECORD
INFORMATION IS AVAILABLE.

NOTE: 52mm NITROGEN AND 102mm OXYGEN
LINES ARE OWNED BY O.S.AIR.
(CONTRACTOR TO VERIFY DEPTH)

| REFERENCE NUMBER | | STATION | | UNDERDRAINS | | BENDS AND BRANCHES FOR INFORMATION ONLY |
|----------------------------|---|----------|----------|----------------------------|---|---|
| | | | | 603 | 605 | |
| | | FROM | TO | 150 mm CONDUIT, TYPE F (*) | 150 mm SHALLOW PIPE UNDERDRAIN WITH FABRIC WRAP | 150 mm X 45° |
| | | E ELEV. | E ELEV. | METER | METER | EACH |
| U1 | L | 3+900 | 3+927.25 | 3 | 24.25 | 1 |
| | | 190.205 | 190.06 | | | |
| U2 | L | 3+927.25 | 3+996.8 | 3 | 71.5 | 1 |
| | | 190.06 | 190.555 | | | |
| U3 | L | 3+979 | 4+000 | 3 | 18 | 1 |
| | | 190.445 | 190.52 | | | |
| U4 | R | 3+900 | 3+927.25 | 3 | 24.25 | 1 |
| | | 190.275 | 190.18 | | | |
| U5 | R | 3+927.25 | 3+958.5 | 3 | 28.25 | 1 |
| | | 190.18 | 190.31 | | | |
| U6 | R | 3+960 | 4+000 | 3 | 37 | 1 |
| | | 190.32 | 190.52 | | | |
| TOTALS CARRIED TO SHEET 76 | | | | 18 | 203.25 | 6 |

