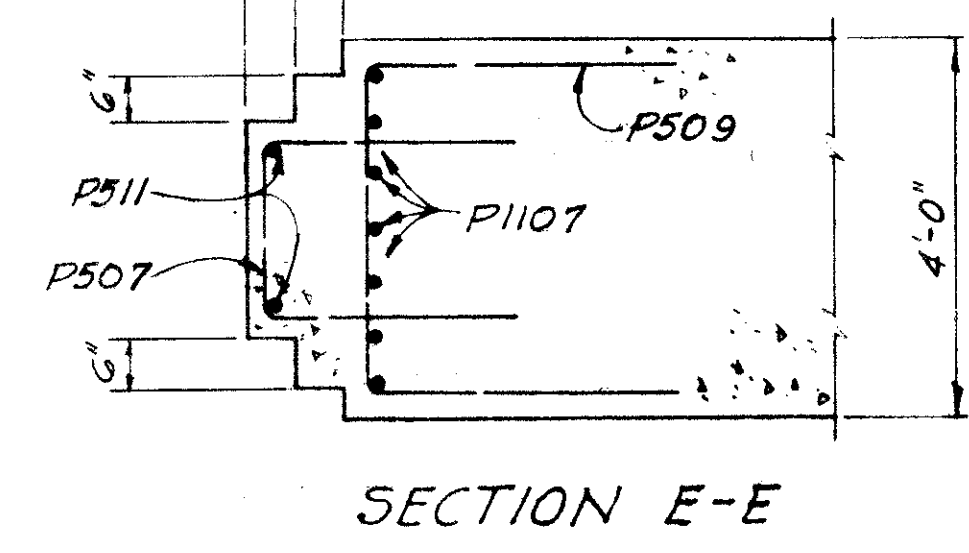
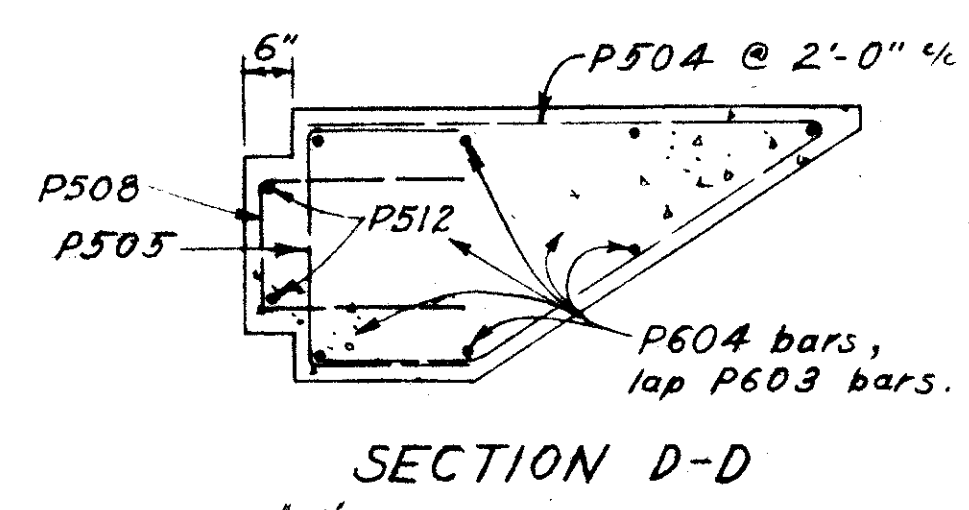
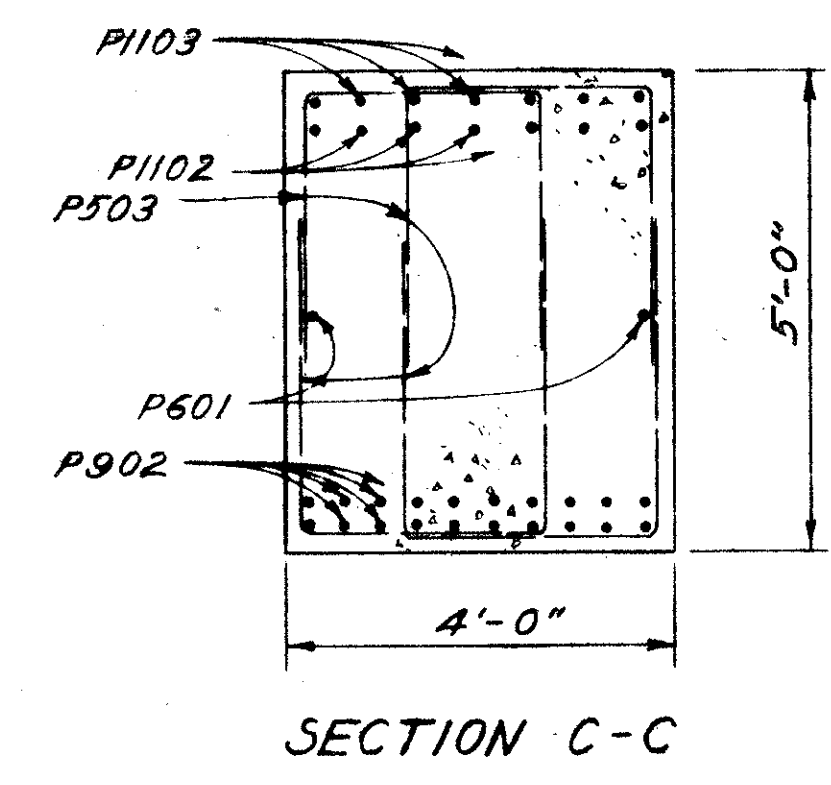
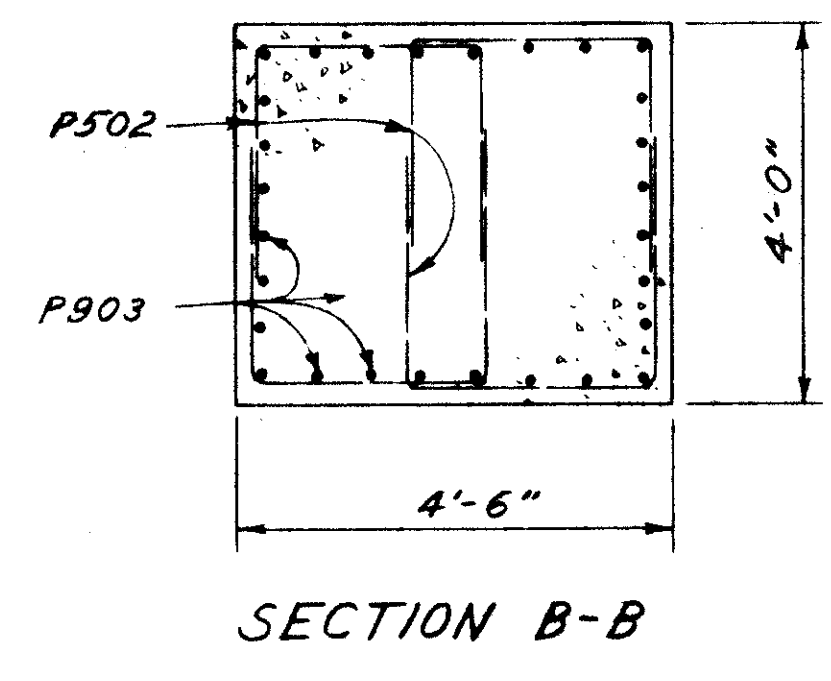
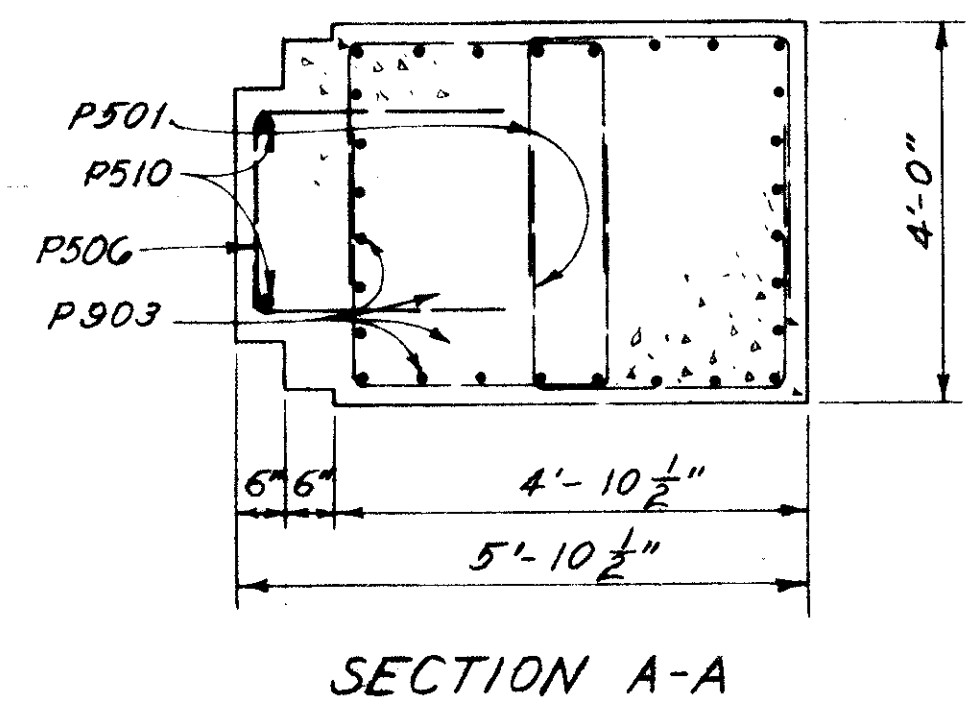
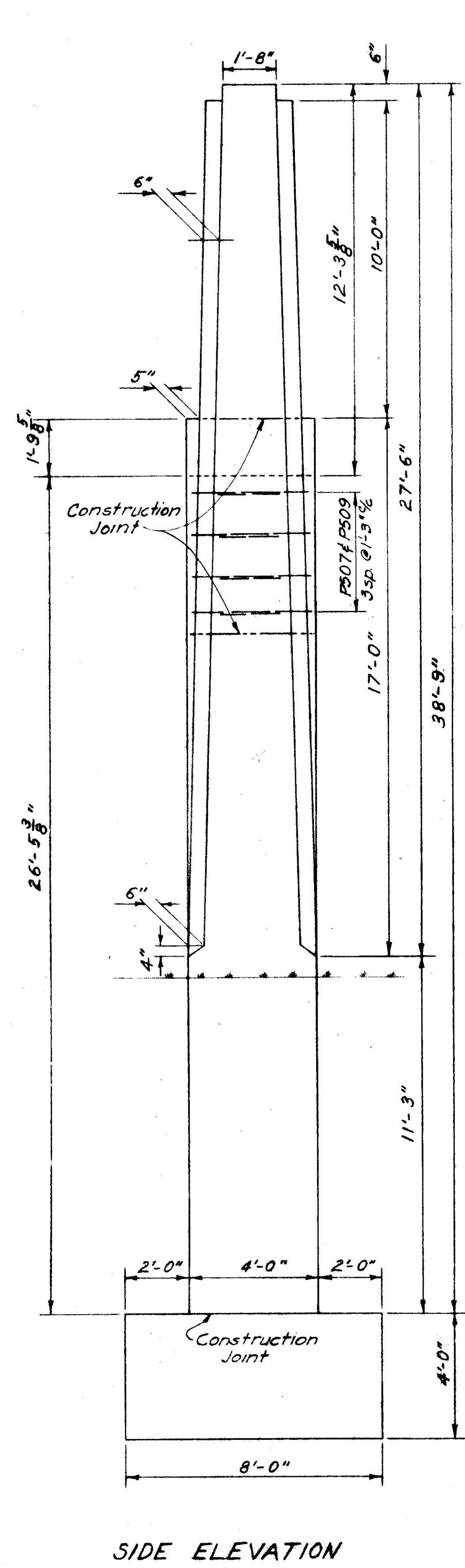


LAK-640-2.56



REINFORCING STEEL LIST										
MARK	No.	LENGTH	WEIGHT	SHR	S/W	N/W	W/W	SHR	S/W	
WINGWALLS										
W801	100	5'-2"	1,491	B	41	67				
W802	12	8'-8"	278	B	12					
W803	2	11'-5"	61	S	2					
W804	2	13'-3"	71	S	2					
W805	2	13'-9"	74	S	2					
W806	2	14'-3"	76	S	2					
W807	2	16'-9"	89	S	2					
W808	2	17'-8"	94	S	2					
W809	2	18'-8"	100	S	2					
W810	1	19'-8"	53	S	1					
W811	24	6'-7"	422	B		24				
W701	18	7'-4"	270	B	18					
W702	9	6'-10"	126	B	9					
W703	21	5'-10"	250	B	9	12				
W704	4	7'-7"	62	S	4					
W705	2	8'-11"	37	S	2					
W706	2	9'-0"	37	S	2					
W707	3	10'-8"	66	S	3					
W708	2	11'-2"	46	S	2					
WG01	37	4'-8"	260	B	6	31				
WG02	7	3'-11"	41	B	7					
WG03	5	11'-3"	85	S	5					
WG04	9	13'-6"	183	S	9					
WG05	7	10'-0"	105	S	7					
WG06	26	5'-9"	225	B	18	8				
WG07	20	11'-6"	346	S		20				
WG08	4	7'-0"	42	S	4					
WG09	12	6'-10"	124	B	12					
WG10	18	8'-0"	216	S	18					
WG11	6	20'-1"	181	S	6					
WG12	6	18'-6"	167	S	6					
WG13	6	17'-0"	153	S	6					
WG14	6	14'-8"	132	S	6					
WG15	2	12'-4"	37	S	2					
WG16	2	11'-11"	36	S	2					
WG17	2	11'-5"	34	S	2					
WG18	2	8'-10"	27	S	2					
WG19	2	8'-6"	26	S	2					
W501	12	23'-6"	294	B	12					
W502	14	27'-6"	402	B	14					
W503	2	15'-9"	53	B	2					
W504	2	7'-9"	16	B	2					
W505	6	15'-6"	97	B	6					
W506	2	18'-0"	38	B	2					
W507	2	9'-0"	19	B	2					
W508	2	4'-6"	9	B	2					
W509	4	7'-5"	31	S	4					
W510	2	8'-9"	18	S	2					
W511	4	8'-11"	37	S	2	2				
W512	3	10'-5"	33	S	3					
W513	2	10'-11"	23	S	2					
W514	4	11'-2"	47	S	2	2				
W515	2	13'-0"	27	S	2					
W516	2	13'-7"	28	S	2					
W517	2	14'-4"	30	S	2					
W518	2	16'-3"	34	S	2					
W519	2	17'-3"	36	S	2					
W520	2	18'-3"	38	S	2					
W521	1	19'-3"	20	S	1					
W522	2	11'-6"	24	B	2					
W523	10	30'-6"	318	B		10				
W524	2	20'-10"	44	B	2					
W525	4	23'-6"	98	B	4					
W526	4	11'-6"	48	B	4					
W527	20	35'-6"	741	B		20				
W528	6	19'-8"	123	S	6					
W529	6	18'-2"	114	S	6					
W530	6	16'-8"	104	S	6					
W531	6	14'-5"	90	S	6					
W532	2	12'-0"	25	S	2					
W533	2	11'-8"	24	S	2					
W534	2	8'-3"	17	S	2					
W535	2	13'-6"	28	B	2					
RE101	2	7'-6"	S	RE701	1	6'-2"	S			
RE1001	1	7'-2"	S	REG01	1	5'-11"	S			
RE901	2	6'-10"	S	RE501	2	5'-7"	S			
RE801	1	6'-6"	S	RE401	1	5'-3"	S			
BENDING DIAGRAMS										
W811	5'-6"		W701		6'-6"		W702		6'-0"	
W703	5'-0"		W601		4'-0"		W602		3'-3"	
A1101	19'-8"		F901		6'-6"					
length %										
R=79'-9" R=89'-0"										
W501 thru W504 W506 thru W508 W522 thru W527 and W535										
May be bent in the field										
P1101 10'-0"										
8'-4"										
A504 2'-9"										
3'-6"										
A501 30'-8"										
A503 22'-8"										
A505 2'-6"										
12 5'-5"										
A1001 11'-8"										
3'-2"										
WG06 2'-0"										
WG09 2'-0"										
3'-9"										
12'-6"										
5'-3"										
34										
7'-5"										
2'-1"										
5'-9"										
34										
3'-5"										
1'-7"										
34										
5'-0"										
2'-1"										
BAR SIZE is indicated in the bar mark. The first digit where three digits are used, and the first two digits where four are used, indicate the bar size number. For example, A700 is a No. 7 size bar and A1014 is a No. 10 size bar.										
REPLACEMENT BARS: If reinforcing bars are fabricated from stock which has been previously tested and approved by the Ohio Highway Testing Lab., test samples as provided in Sec. 5-4.02 need not be furnished and replacement bars will not be required.										
REPLACEMENT BARS										
MARK	No.	LENGTH	SHR.	MARK	No.	LENGTH	SHR.			
SUPERSTRUCTURE										
5501	26	4'-4"	118	S						
5502	2	5'-0"	10	S						
5503	2	5'-9"	12	S						
5504	2	6'-6"	14	S						
5505	12	5'-3"	66	S						
5506	2	5'-1"	11	S						
5507	2	4'-6"	9	S						
5508	2	3'-6"	7	S						
PIER										
P1101	14	18'-11"	1,407	B						
P1102	14	37'-11"	2,820	S						
P1103	14	30'-8"	2,281	S						
P1104	14	40'-0"	2,975	S						
P901	20	40'-0"	2,720	S						
P902	40	37'-11"	5,157	S						
P903	252	24'-4"	20,849	S						
P601	4	37'-11"	228	S						
P602	2	40'-0"	120	S						
P603	14	5'-3"	110	S						
P604	14	9'-9"	205	S						
P501	136	7'-8"	1,088	B						
P502	476	7'-5"	3,682	B						
P503	416	8'-7"	3,724	B						
P504	12	10'-10"	136	B						
P505	12	5'-5"	68	B						
P506	34	7'-1"	251	B						
P507	8	6'-9"	56	B						
P508	12	5'-3"	66	B						
P509	8	9'-9"	81	B						
P510	4	23'-0"	96	S						
P511	4	8'-5"	35	S						
P512	4	10'-4"	43	S						
F901	256	7'-9"	6,746	B						
F701	45	7'-6"	690	S						
F702	54	6'-6"	717	S						

STATE OF OHIO
DEPARTMENT OF HIGHWAYS
DIVISION OF DESIGN AND CONSTRUCTION
BUREAU OF BRIDGES

**PIER DETAILS
REINFORCING STEEL LIST**
BRIDGE No. LAK-640-0282
N. Y. C. RR OVER S. R. 640

LAKE COUNTY Sta. 149+06.60

DESIGNED	DRAWN	TRACED	CHECKED	REVIEWED	DATE	REVISED
CPD	FFE		NEY	BFG	8-3-59	8-18-59