

EXTRA AREA DETAIL

SKIFF & VINE ST. INTER.

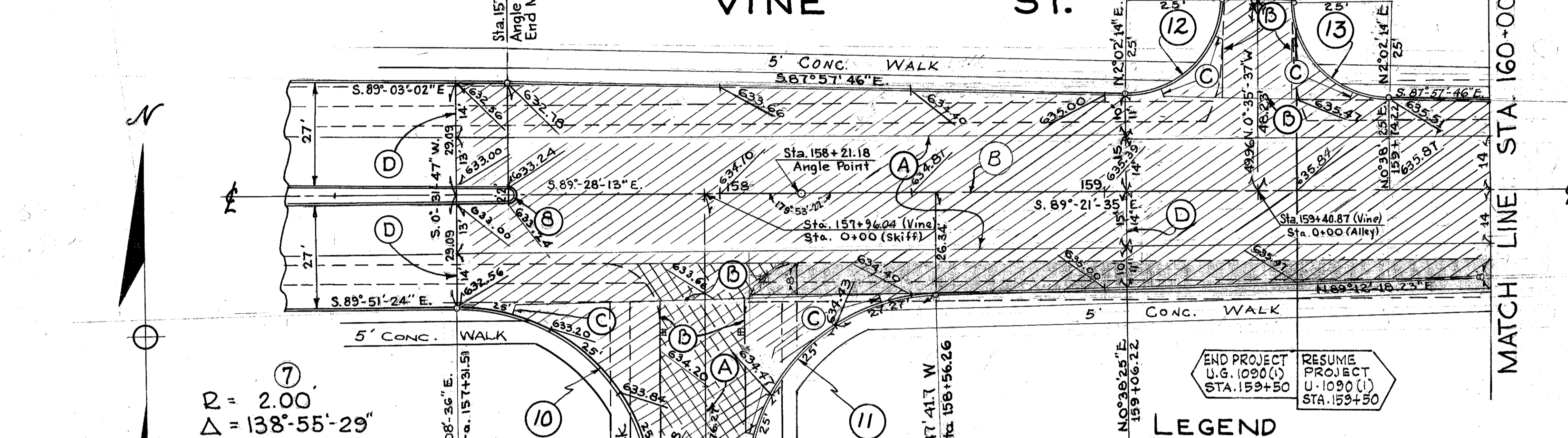
SKIFF SERVICE ROAD

SCALE 1" = 20'

EXTRA AREA QUANTITIES CODE TYPE 7221									
LOCATION	T-71 Port Cement Reinf. Conc. Pavement	I-22 Subbase	I-12 STANDARD TYPE 2-A CURB	I-11 6" x 18" 1" BULLNOSE 3/8 CURB Straight	E-8 Removal & Disposal Of Exist. Pavement	I-11 2 Radius Sandstone Bumper Block 3/8 Bullnose	I-21 4" Port. Cement Concrete Median	I-11 2 1/2 Radius Bullnose Sandstone Curb	E-8 Removal & Disposal Existing Curb
	Sq. Yd.	Cu. Yd.	Lin. Ft.	Lin. Ft.	Sq. Yds.	Lin. Ft.	Sq. Yds.	Lin. Ft.	Lin. Ft.
Sta. 5+60.41						4.85			
5+60.41 Service Rd to 4+75	365	61	157.01					4.90	
Sta. 157+31.51 to Sta. 157+47		3	31.85						
157+31.51 Vine St. to 159+50 Vine St.	1352	225	268.46					40.42	
0+28 to 0+79.24 Skiff	260	43	155.35						
0+79.24 to 2+07.24 Skiff	608	101	286.00						
0+18 Skiff St. to 2+07.24					496				375
U.G. 1090 (1) TOTALS	2585	433	474.86	423.81	496	4.85	4.90	40.42	375
STA. 159+50 to STA. 162+40	1053	176	557					38.12	
U-1090 (1) TOTALS	1053	176	557					38.12	

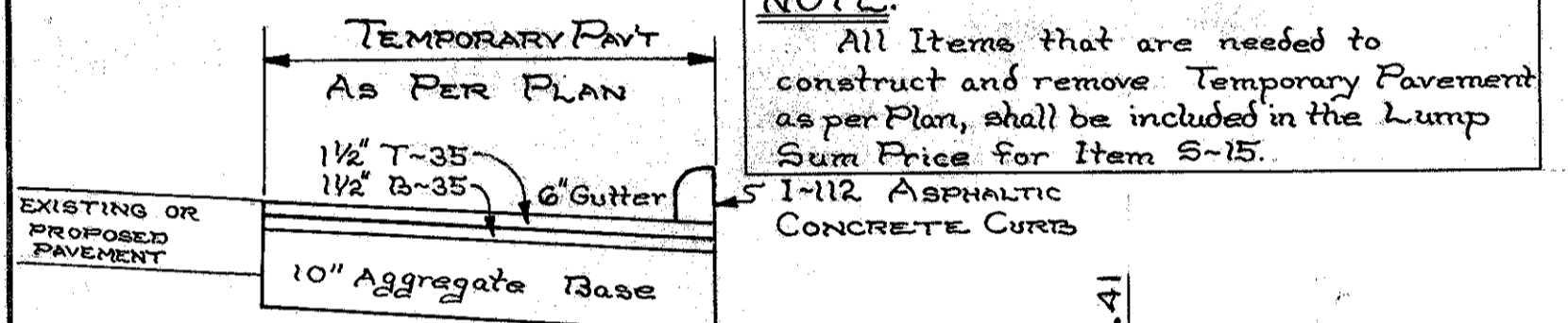
445' Median Taper to Sta. 153+00
10'-0" to 4'-0" Raised Median
Two Pavts 27'-0" % Median Curb to % Outside Curb

445' Pavement Taper to Sta. 161+90

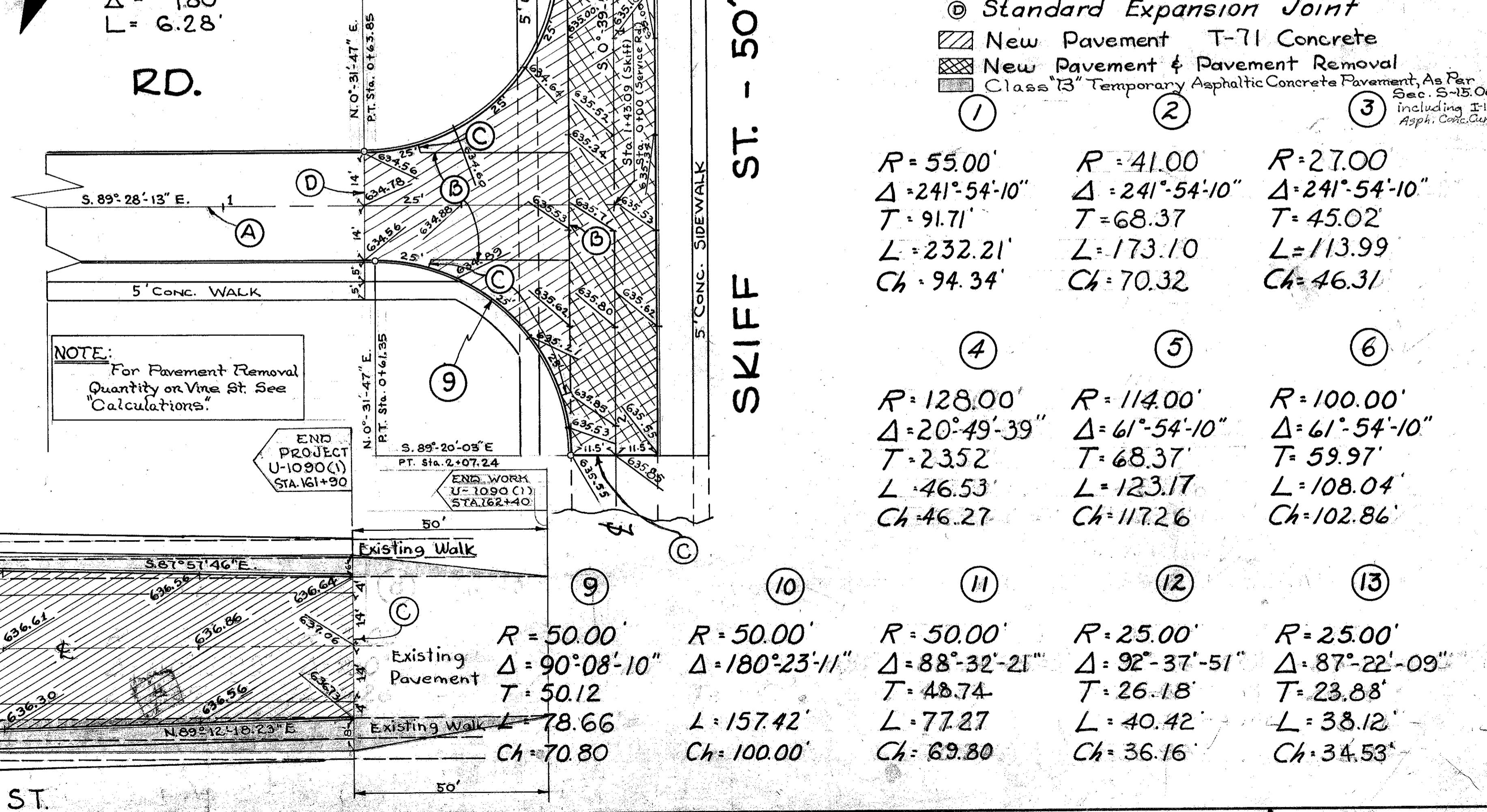
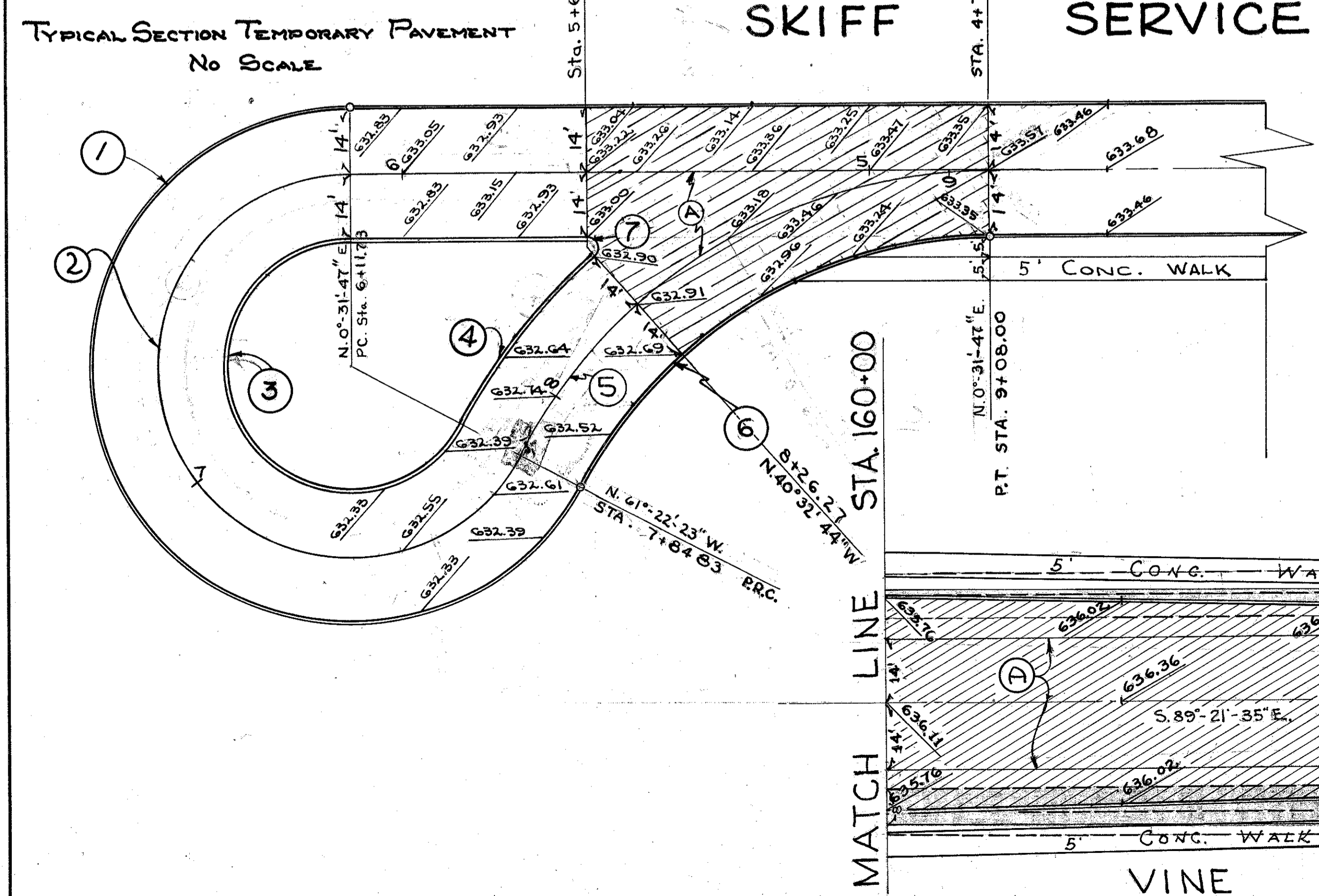


⑦
R = 2.00'
Δ = 138°-55'-29"
L = 4.85'

⑧
R = 2.00'
Δ = 180°
L = 6.28'



NOTE:
All items that are needed to construct and remove Temporary Pavement as per Plan, shall be included in the Lump Sum Price for Item S-15.



- LEGEND**
- Ⓐ Standard Longitudinal Joint
 - Ⓑ Standard Key Joint Without Tie Bars
 - Ⓒ Expansion Joint Without Dowels
 - Ⓓ Standard Expansion Joint
 - ▨ New Pavement T-71 Concrete
 - ▩ New Pavement & Pavement Removal
 - ▧ Class 13 Temporary Asphaltic Concrete Pavement, As Per Sec. S-15.06 including I-112 Asph. Conc. Curb.

① R = 55.00' Δ = 241°-54'-10" T = 91.71' L = 232.21' Ch = 94.34'	② R = 41.00' Δ = 241°-54'-10" T = 68.37' L = 173.10' Ch = 70.32'	③ R = 27.00' Δ = 241°-54'-10" T = 45.02' L = 113.99' Ch = 46.31'
④ R = 128.00' Δ = 20°-49'-39" T = 235.2' L = 46.53' Ch = 46.27'	⑤ R = 114.00' Δ = 61°-54'-10" T = 68.37' L = 123.17' Ch = 117.26'	⑥ R = 100.00' Δ = 61°-54'-10" T = 59.97' L = 108.04' Ch = 102.86'
⑨ Existing Pavement R = 50.00' Δ = 90°-08'-10" T = 50.12' L = 78.66' Ch = 70.80'	⑩ R = 50.00' Δ = 180°-23'-11" T = 48.74' L = 157.42' Ch = 100.00'	⑪ R = 50.00' Δ = 88°-32'-21" T = 48.74' L = 77.27' Ch = 69.80'
⑫ R = 25.00' Δ = 92°-37'-51" T = 26.18' L = 40.42' Ch = 36.16'	⑬ R = 25.00' Δ = 87°-22'-09" T = 23.88' L = 38.12' Ch = 34.53'	

NOTE:
For Pavement Removal Quantity on Vine St. See "Calculations."