

PAVEMENT MARKING SUB-SUMMARY

REFERENCE NO.	LOCATION	STATION		CENTER LINE, DOUBLE SOLID MILES	CENTER LINE, SINGLE SOLID LIN. FT.	24" STOP LINES LIN. FT.	CROSSWALK LINES LIN. FT.
		FROM	TO				
1	LLOYD ROAD					30	
2	LLOYD ROAD						150
3	LLOYD ROAD	21+95	40+35	.35			
4	LLOYD ROAD	38+20	40+00		180		

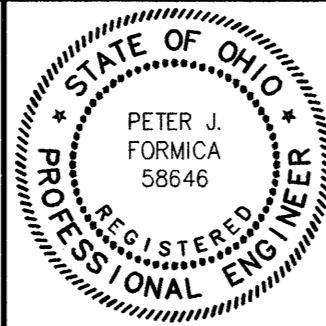
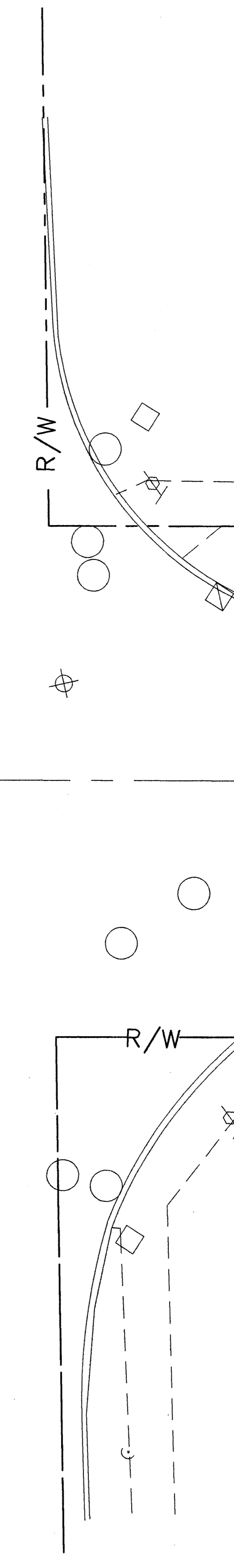
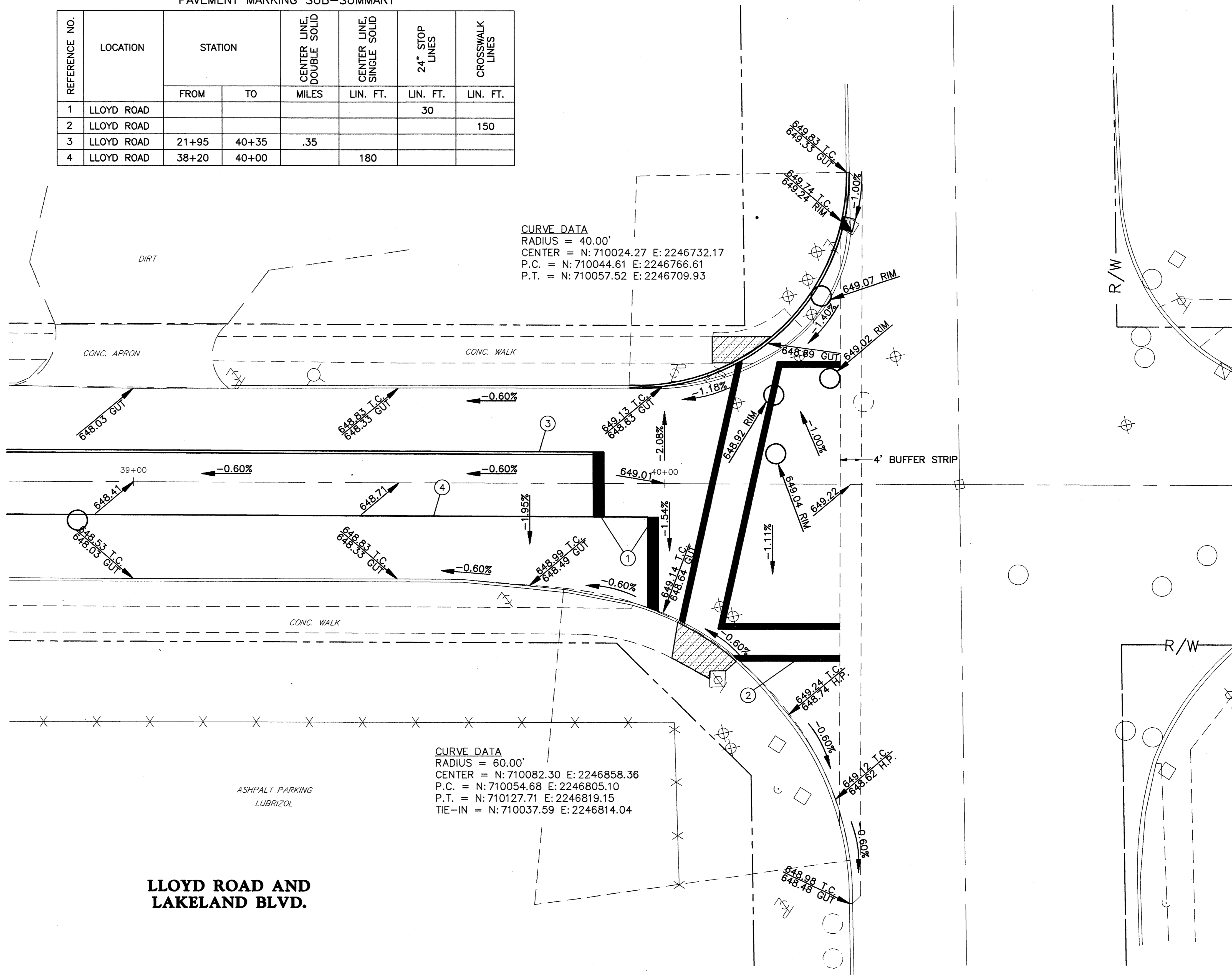
CURVE DATA

RADIUS = 40.00'
 CENTER = N: 710024.27 E: 2246732.17
 P.C. = N: 710044.61 E: 2246766.61
 P.T. = N: 710057.52 E: 2246709.93

CURVE DATA

RADIUS = 60.00'
 CENTER = N: 710082.30 E: 2246858.36
 P.C. = N: 710054.68 E: 2246805.10
 P.T. = N: 710127.71 E: 2246819.15
 TIE-IN = N: 710037.59 E: 2246814.04

LLOYD ROAD AND
 LAKELAND BLVD.



REV. NO.	DESCRIPTION	DATE	BY	CHK'D.

**LLOYD ROAD
 IMPROVEMENTS**
 CITY OF WICKLIFFE, LAKE COUNTY, OHIO

DATE: 2-4-00
 DRAWN BY: M.F.L.
 CHECKED BY: P.J.F.
 APPROVED BY: D.W.
 F.B. No. PG.

**INTERSECTION / TRAFFIC
 DETAILS**

SCALE 1"=10'	
CONTRACT No. 98367	
SHEET NO. 15	OF 20