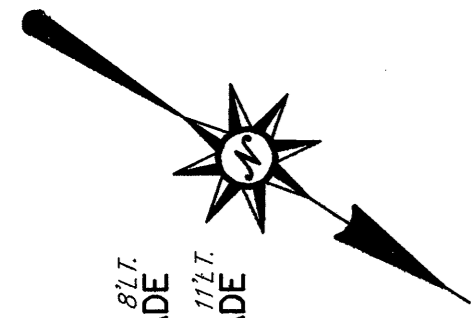
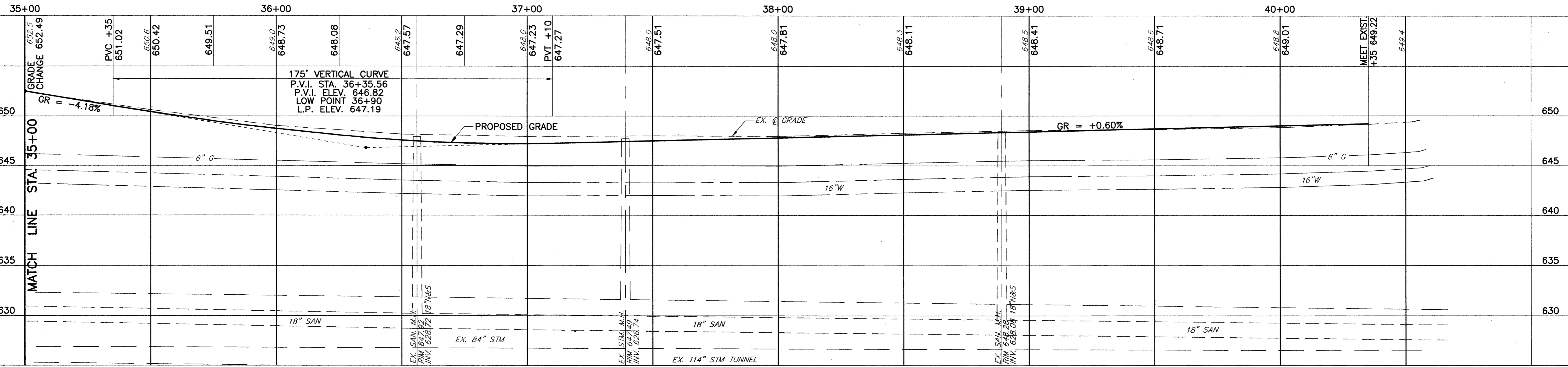


COPYRIGHT - DATE: 02-15-00 13:45 CT CONSULTANTS INC. H:\1999\98367\DWG\98367ALL.DWG



MATCH LINE STA. 35+00

- LEGEND**
- 8" DRIVE REPLACEMENT
 - 6" DRIVE REPLACEMENT
 - 4" CONC. WALK REPLACEMENT
 - CURB RAMP REPLACEMENT
 - M.H. - ADJUST TO GRADE
 - M.H. - PROPOSED SANITARY
 - M.H. - PROPOSED STORM
 - I.B. - PROPOSED
 - I.B. - ADJUST TO GRADE



<p>CT Consultants, Inc. Engineers • Architects • Planners Willoughby • Mentor • Columbus • North Canton • Youngstown</p>		REV. NO.	DESCRIPTION	DATE	BY	CH'K'D.	<p>LLOYD ROAD IMPROVEMENTS</p> <p>CITY OF WICKLIFFE, LAKE COUNTY, OHIO</p>	DATE: 2-15-00	<p>PLAN & PROFILE</p> <p>LLOYD ROAD</p> <p>STA. 35+00 TO 40+00</p>	DRAWN BY: M.F.L.	<p>SCALE</p> <p>HORIZ. 1"=20'</p> <p>VERT. 1"=5'</p> <p>CONTRACT No.</p> <p>98367</p> <p>SHEET NO. OF</p> <p>8 20</p>
		APPROVED BY: P.J.F.	APPROVED BY: P.J.F.	F.B. No. 1140_Pc.1-32							