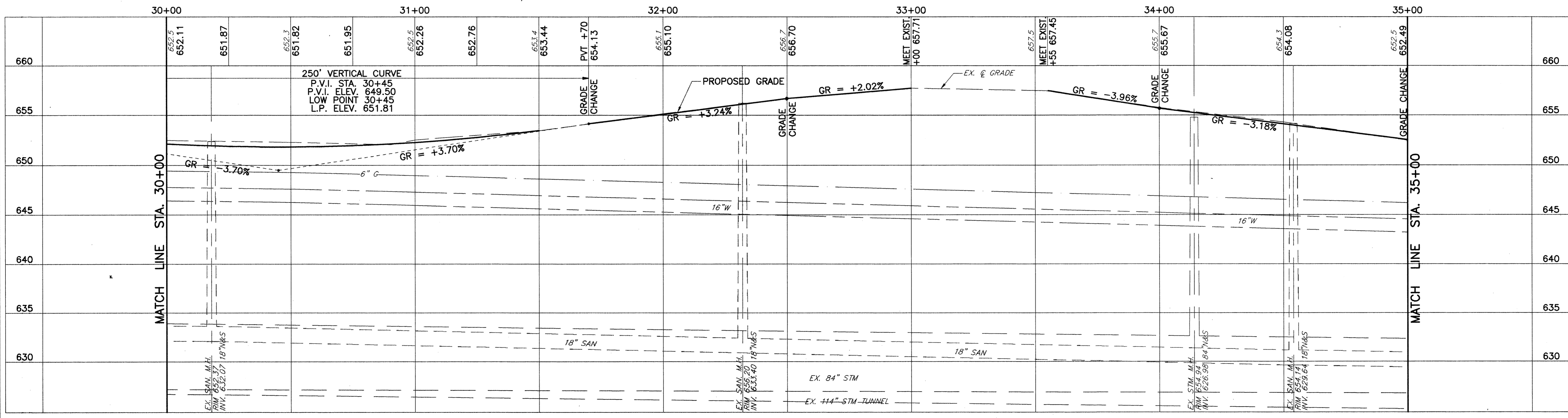
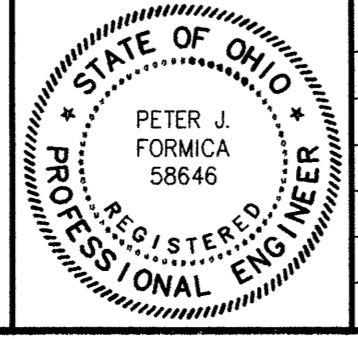


- LEGEND**
- 8" DRIVE REPLACEMENT
 - 6" DRIVE REPLACEMENT
 - 4" CONC. WALK REPLACEMENT
 - CURB RAMP REPLACEMENT
 - M.H. - ADJUST TO GRADE
 - M.H. - PROPOSED SANITARY
 - M.H. - PROPOSED STORM
 - I.B. - PROPOSED
 - I.B. - ADJUST TO GRADE



CT Consultants, Inc.
 Engineers • Architects • Planners
 Willoughby • Mentor • Columbus • North Canton • Youngstown



REV. NO.	DESCRIPTION	DATE	BY	CHK'D.

LLOYD ROAD IMPROVEMENTS
 CITY OF WICKLIFFE, LAKE COUNTY, OHIO

DATE:	2-15-00
DRAWN BY:	M.F.L.
CHECKED BY:	P.J.F.
APPROVED BY:	P.J.F.
F.B. No.	1140 Pg. 1-32

PLAN & PROFILE LLOYD ROAD STA. 30+00 TO 35+00

CONTRACT NO. **98367**

SHEET NO. **7** OF **20**

SCALE	
HORIZ.	1"=20'
VERT.	1"=5'
CONTRACT NO.	
98367	
SHEET NO.	OF
7	20

COPYRIGHT - DATE: 02-15-00 13:37 CT CONSULTANTS INC. H:\98367\DWG\98367ALL.DWG