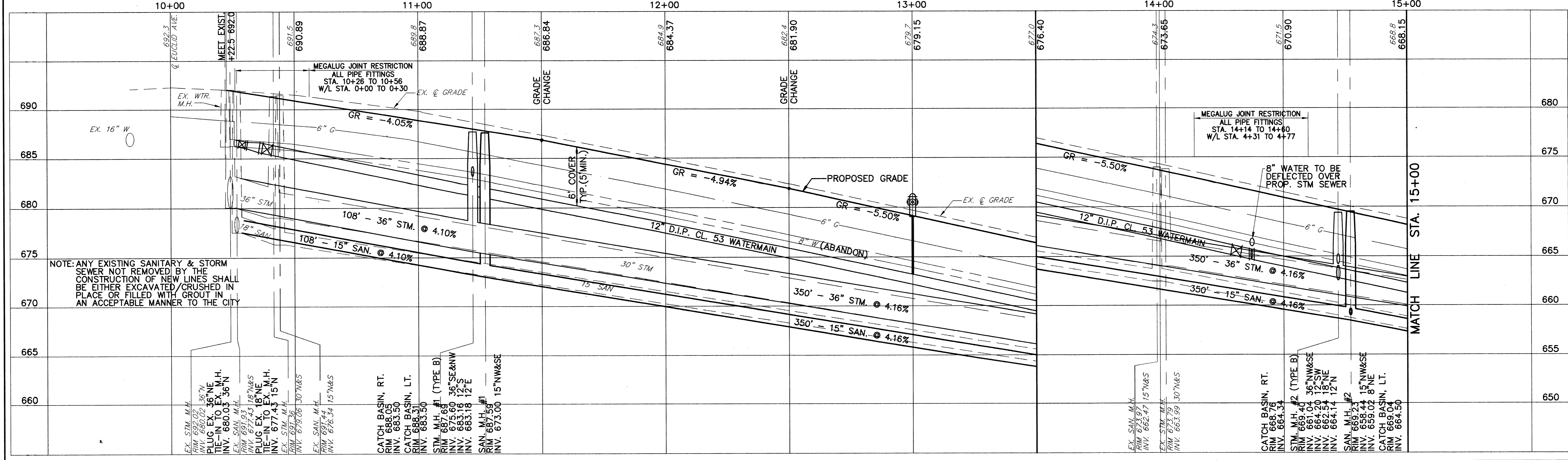
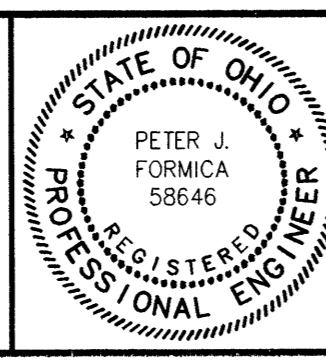


LEGEND

- 8" DRIVE REPLACEMENT
- 6" DRIVE REPLACEMENT
- 4" CONC. WALK REPLACEMENT
- CURB RAMP REPLACEMENT
- M.H. - ADJUST TO GRADE
- M.H. - PROPOSED SANITARY
- M.H. - PROPOSED STORM
- I.B. - PROPOSED
- I.B. - ADJUST TO GRADE



CT Consultants, Inc.
 Engineers • Architects • Planners
 Willoughby • Mentor • Columbus • North Canton • Youngstown



REV. NO.	DESCRIPTION	DATE	BY	CHK'D.

LLOYD ROAD IMPROVEMENTS
 CITY OF WICKLIFFE, LAKE COUNTY, OHIO

DATE:	2-15-00
DRAWN BY:	M.F.L.
CHECKED BY:	P.J.F.
APPROVED BY:	P.J.F.
F.B. No.	1140 Pg. 1-32

PLAN & PROFILE LLOYD ROAD STA. 10+00 TO 15+00

SCALE
 HORIZ. 1"=20'
 VERT. 1"=5'

CONTRACT No.
98367

SHEET NO. **3** OF **20**

COPYRIGHT - DATE: 02-15-00, 13 CT CONSULTANTS, INC. H:\98367\DWG\98367ALL.DWG