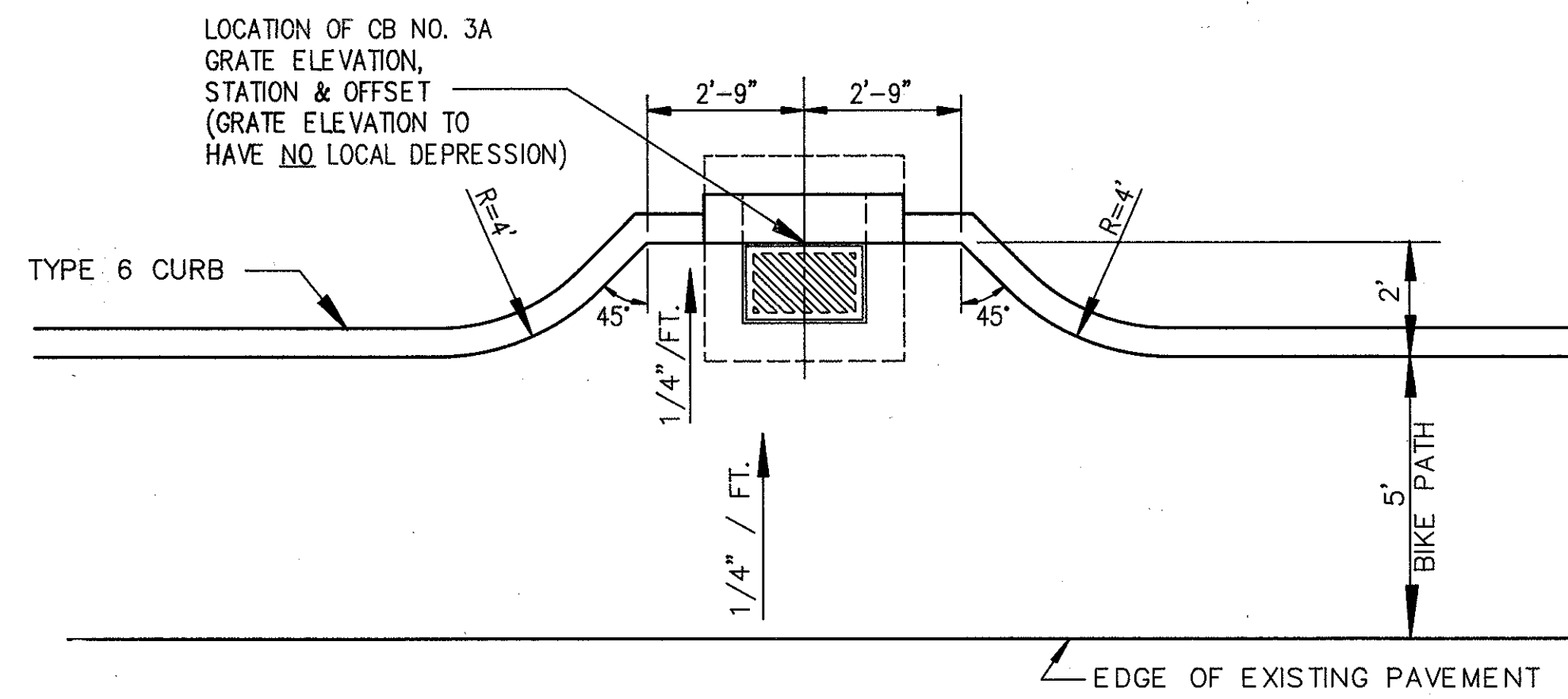
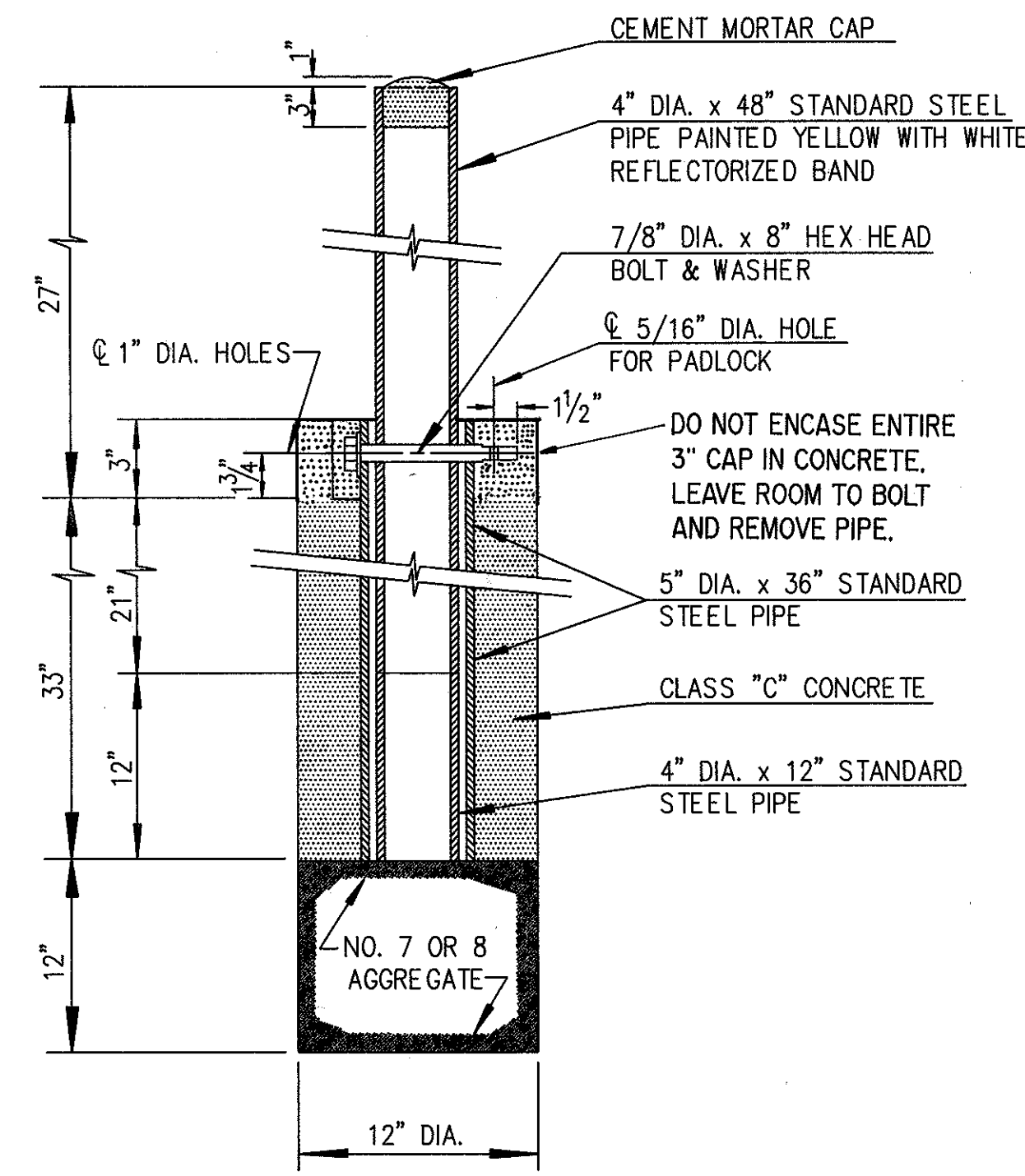


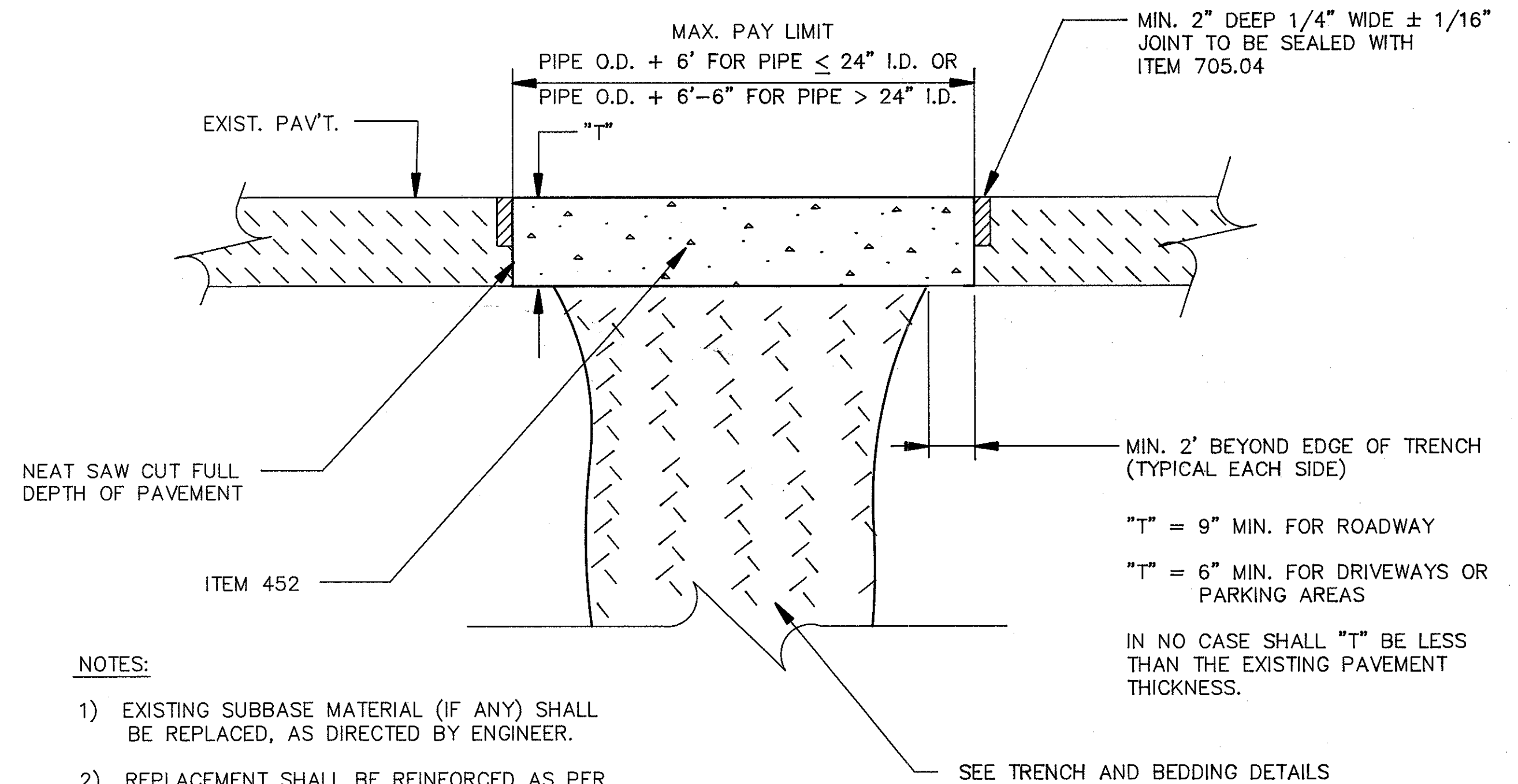
# MISCELLANEOUS DETAILS



**CATCH BASIN NO. 3A LOCATION DETAIL**

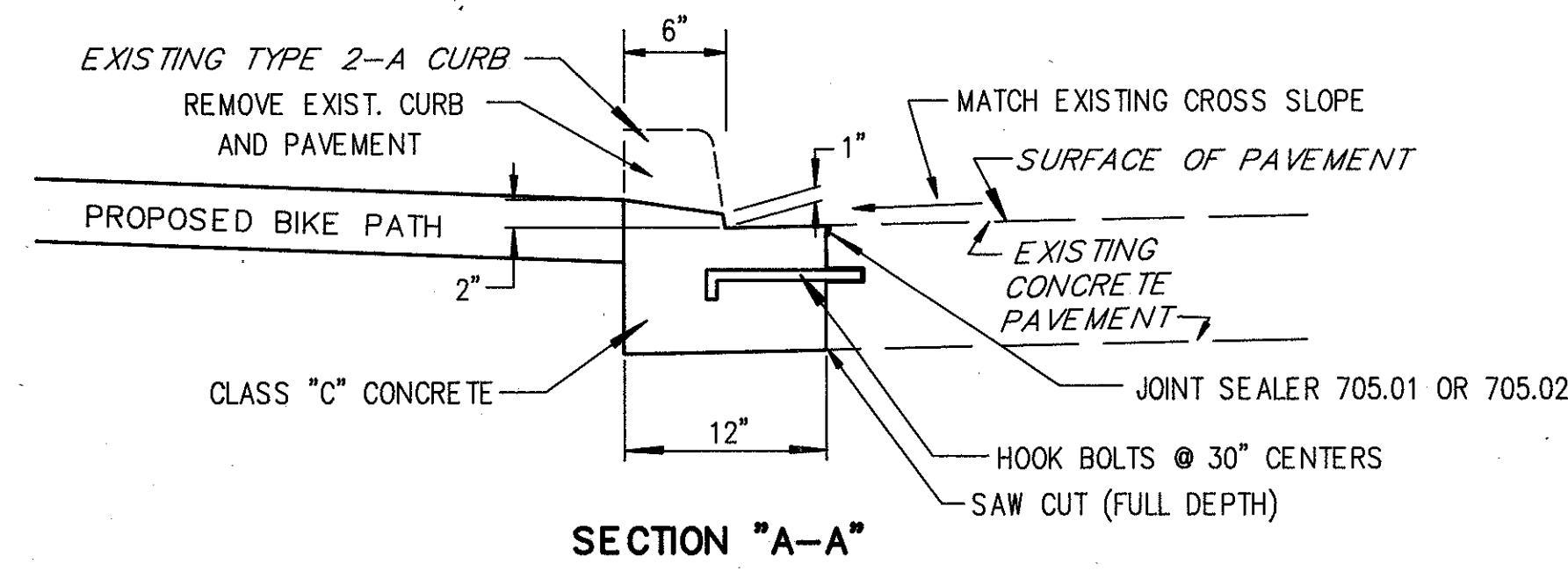


**ITEM 606, GUARD POST, AS PER PLAN**  
FOR ADDITIONAL INFORMATION, SEE GENERAL NOTE SHEET 13.

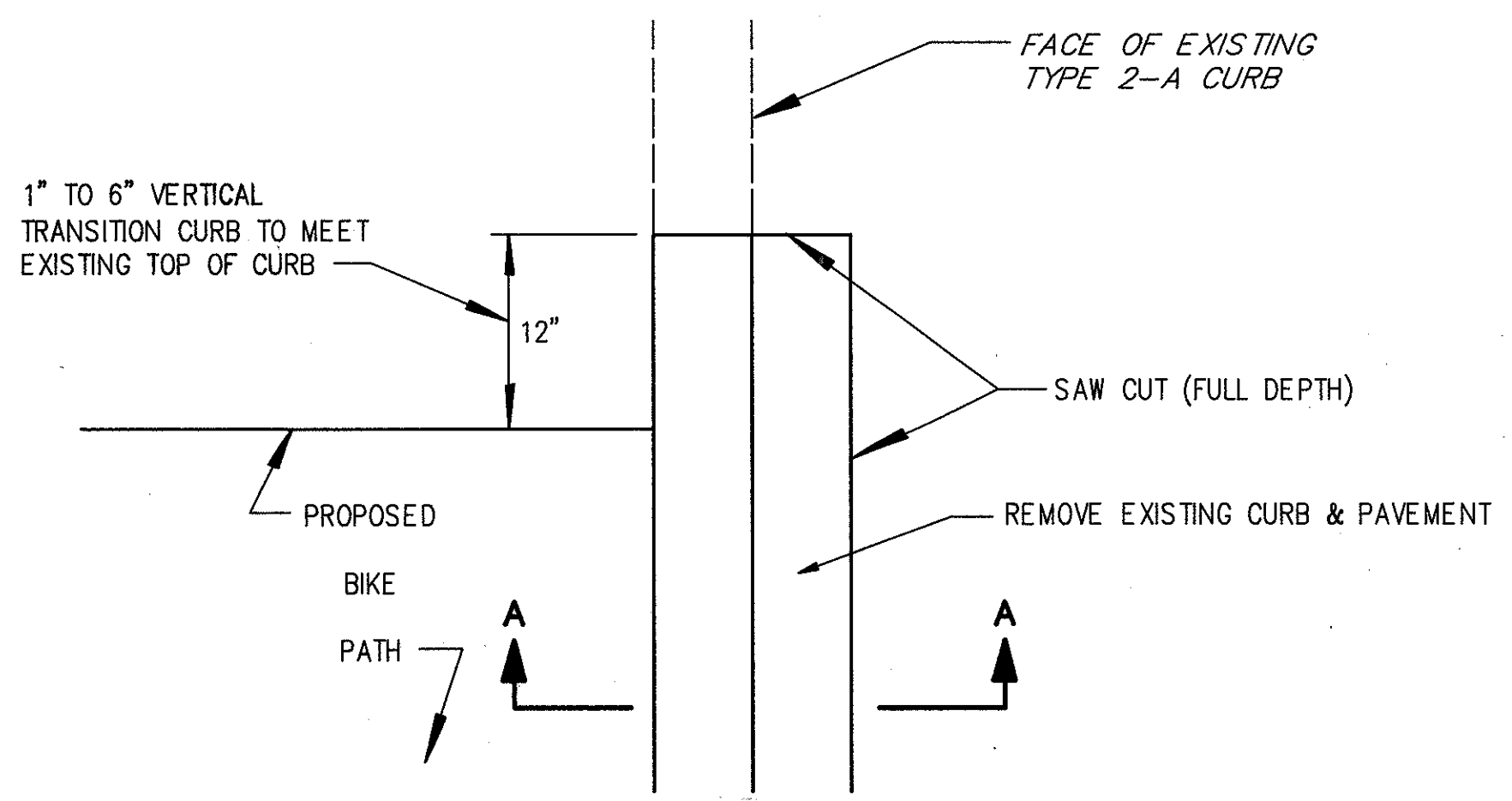


- NOTES:**
- EXISTING SUBBASE MATERIAL (IF ANY) SHALL BE REPLACED, AS DIRECTED BY ENGINEER.
  - REPLACEMENT SHALL BE REINFORCED AS PER ITEM 709.10 OR 709.12 IF EXISTING PAVEMENT IS REINFORCED.
  - 5/8"  $\phi$  HOOKBOLT @ 30" O.C. MAY BE REQUIRED AS DIRECTED BY THE ENGINEER.

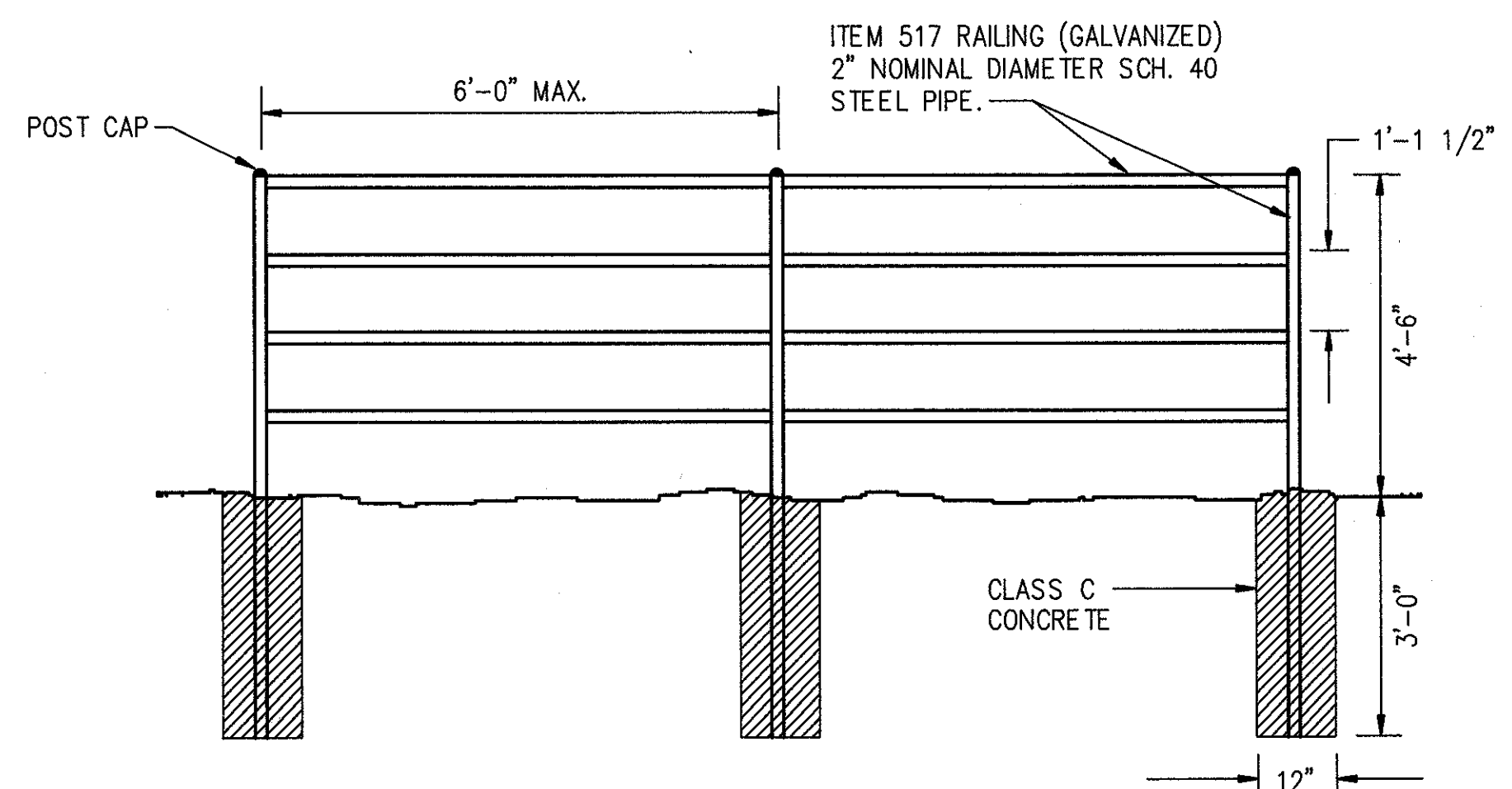
**TYPE A PAVEMENT REPLACEMENT**



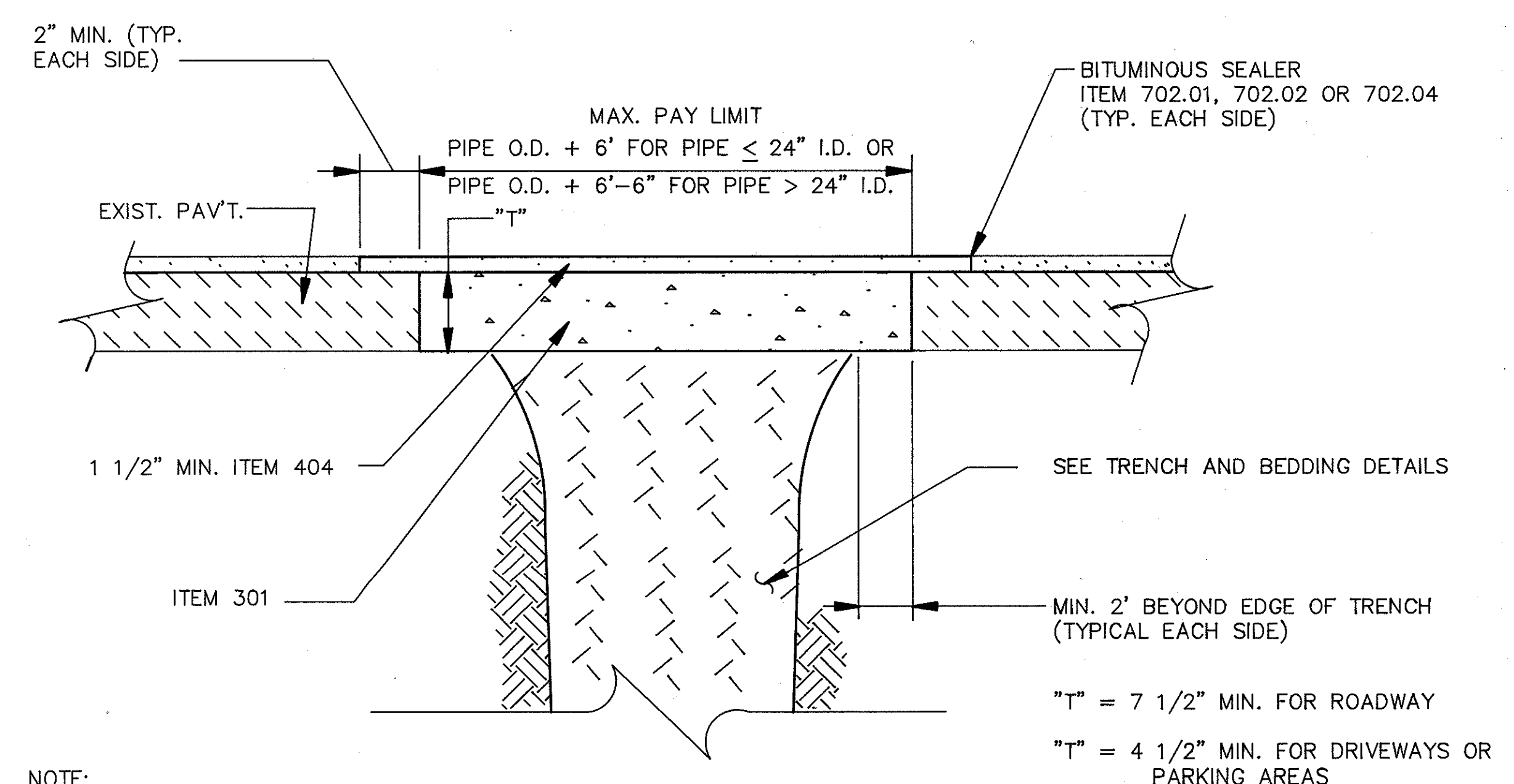
**SECTION "A-A"**



**COMBINATION CURB AND GUTTER  
ITEM 609 CURB - TYPE 2, AS PER PLAN**  
FOR ADDITIONAL INFORMATION SEE GENERAL NOTE SHEET 13.



**ITEM 517 - RAILING, PIPE, AS PER PLAN**  
FOR ADDITIONAL INFORMATION SEE GENERAL NOTE SHEET 13.



- NOTE:**
- EXISTING SUBBASE MATERIAL (IF ANY) SHALL BE REPLACED, AS DIRECTED BY ENGINEER.

**TYPE C PAVEMENT REPLACEMENT**