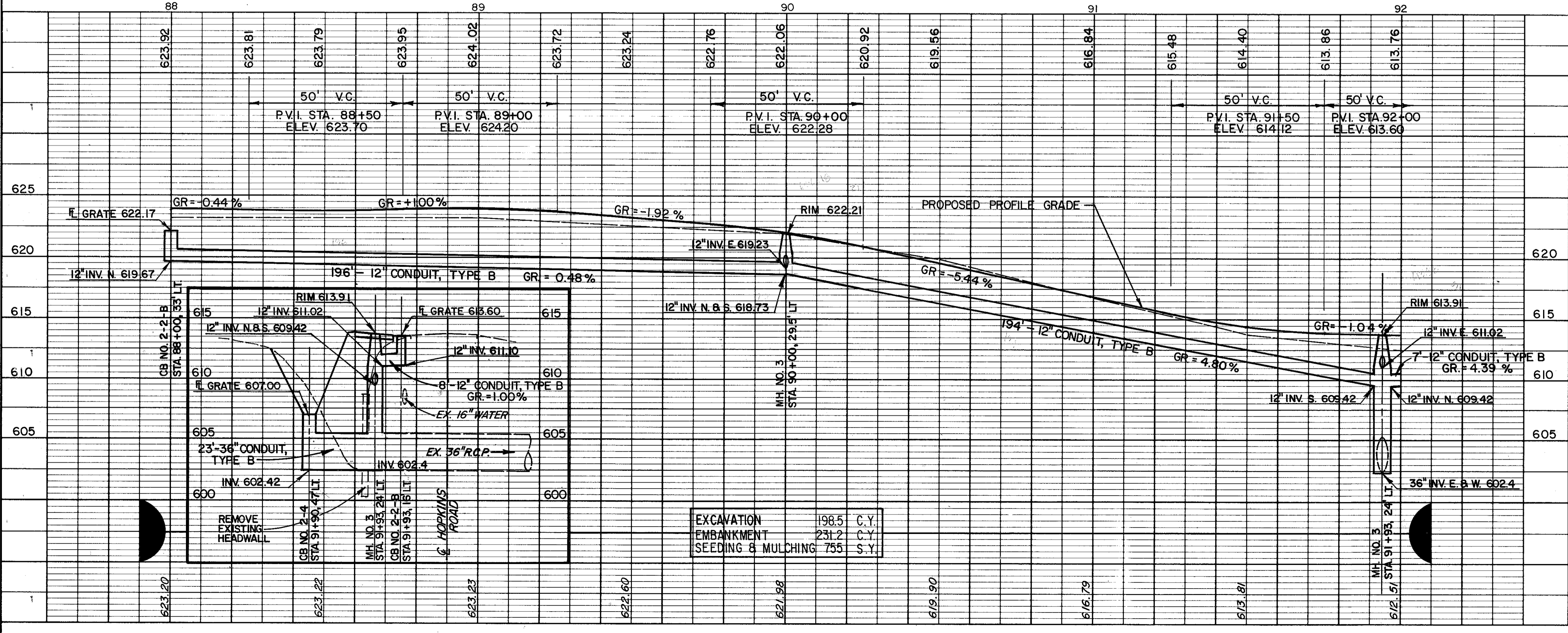


FOR TYPICAL SECTION SEE SHEET 10
 FOR CROSS SECTIONS SEE SHEET 99 THRU 101
 FOR SIGNING PLAN SEE SHEET 151
 FOR PAVEMENT MARKING DETAILS SEE SHEET 154
 FOR PAVEMENT REPLACEMENT DETAILS SEE SHEET 144
 FOR RAILING DETAIL SEE SHEET 144



ROADWAY		202	517
REF.	LOCATION	STRUCTURE REMOVED	RAILING, PIPE AS PER PLAN
R-1	STA. 91+90, 36' LT.	LUMP	L.F.
R-2	STA. 91+24 TO STA. 92+00 LT.	LUMP	76
TOTALS		LUMP	76

DRAINAGE		603	603	604	604	604
REF.	LOCATION	12" CONDUIT, TYPE B	36" CONDUIT, TYPE B	CATCH BASIN NO. 2-2-B A.P.P.	CATCH BASIN NO. 4	MANHOLE NO. 3
D-1	STA. 88+00, 33' LT. TO 90+00, 29.5' LT.	196				
D-2	STA. 90+00, 29.5' LT. TO 91+93, 24' LT.	194				
D-3	STA. 91+93, 24' LT. TO 92+00, 23' LT.	7				
D-4	STA. 91+93, 24' LT. TO 91+90, 47' LT.		23			
D-5	STA. 88+00, 33' LT.			1		
D-6	STA. 90+00, 29.5' LT.					1
D-7	STA. 91+90, 47' LT.				1	
D-8	STA. 91+93, 24' LT.					1
D-9	STA. 90+00, 21.5' LT. TO 29.5' LT.	8				
D-10	STA. 91+93, 16' LT. TO 24' LT.	8				
TOTALS		413	23	3	1	2

PLAN & PROFILE STA. 88+00 TO STA. 92+00

HOPKINS ROAD