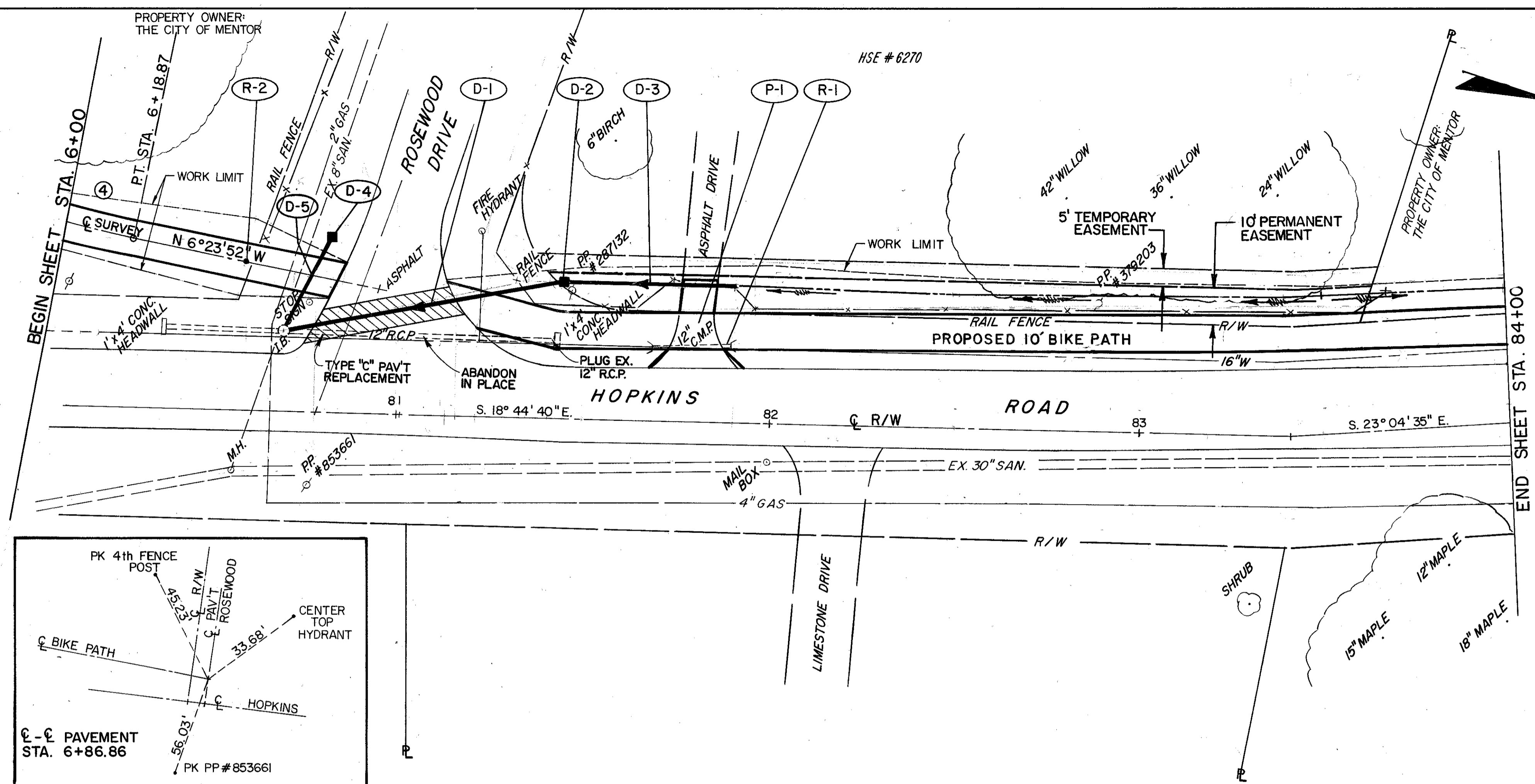


11-1

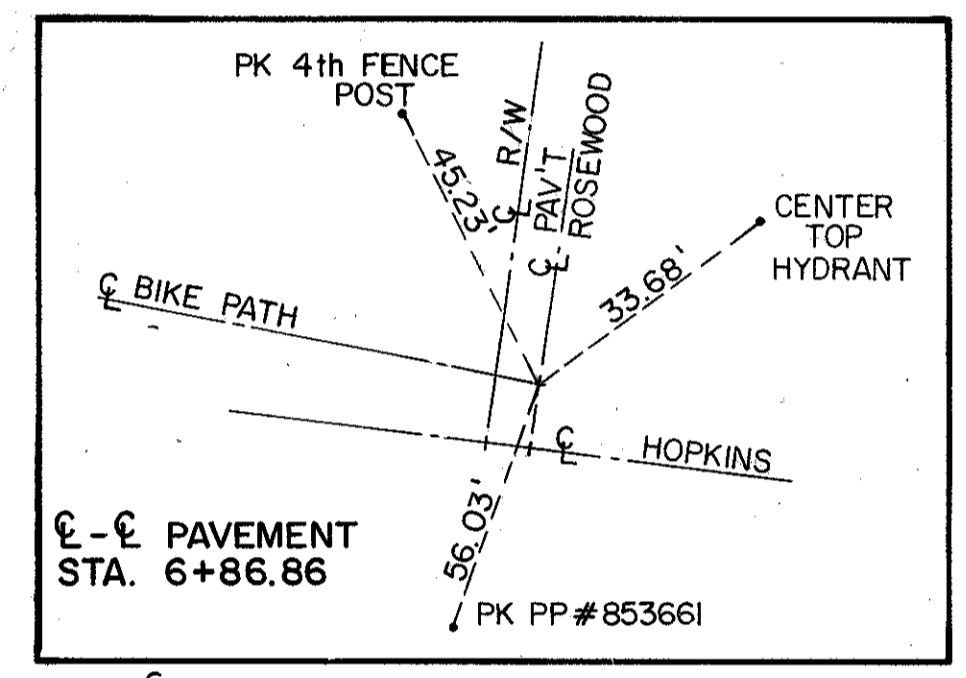


BIKE PATH CURVE DATA

④
 R = 313.24'
 Δ = 9°07'35"
 T = 25.00'
 C = 49.84'
 L = 49.89'

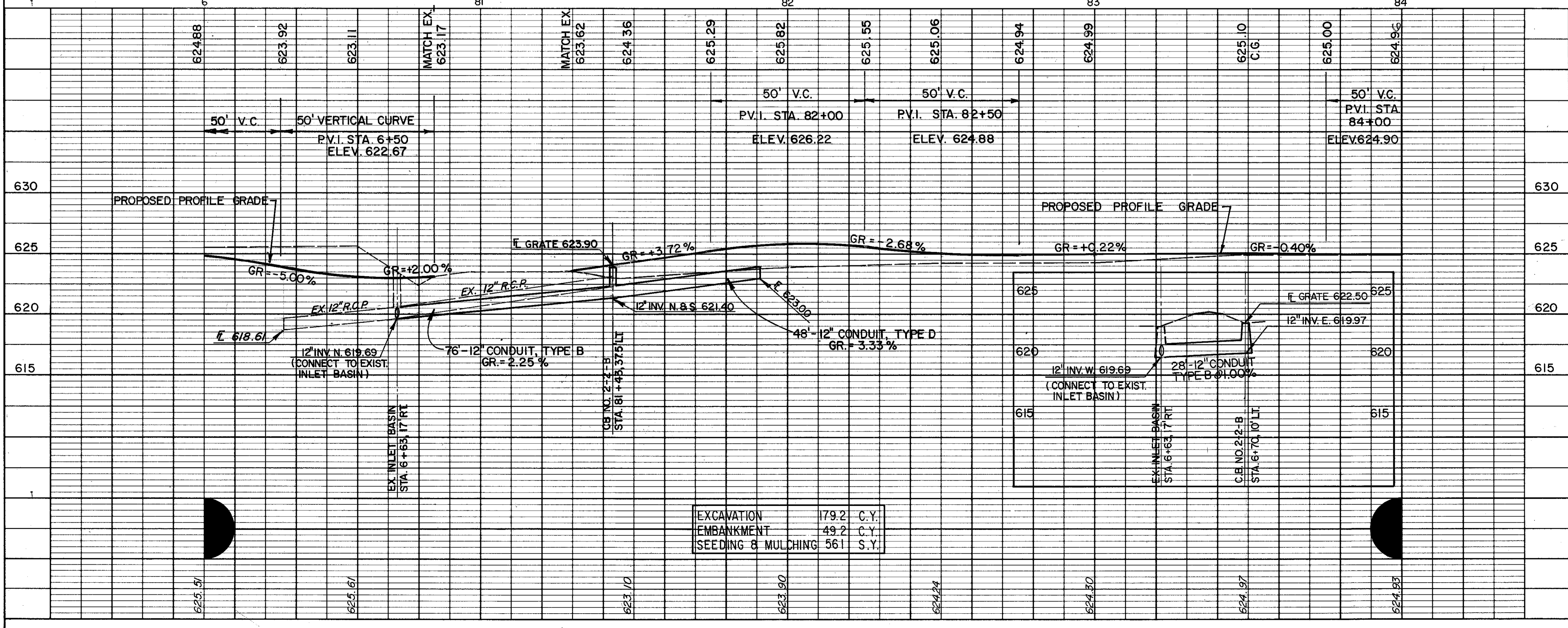
BENCHMARK: TOP OF HYDRANT AT N.W. CORNER, ROSEWOOD & HOPKINS ELEV. 627.46

FOR TYPICAL SECTION SEE SHEET 10
 FOR CROSS SECTIONS SEE SHEET 95 THRU 97
 FOR SIGNING PLAN SEE SHEET 151
 FOR PAVEMENT MARKING DETAILS SEE SHEET 154
 FOR DRIVEWAY PROFILES SEE SHEET 137
 FOR DRIVEWAY DETAILS SEE SHEET 19
 FOR GUARD POST DETAIL SEE SHEET 144
 FOR RIGHT-OF-WAY PLANS SEE SHEET 160



ROADWAY		202	606
REF.	LOCATION	L.F.	E.A.
R-1	STA. 81+80, 20' LT.	22	
R-2	STA. 6+50, C		1
TOTALS		22	1

DRAINAGE		603	603	604
REF.	LOCATION	L.F.	L.F.	E.A.
D-1	STA. 6+63, 17' RT. TO 81+43, 37.5' LT.	76		
D-2	STA. 81+43, 37.5' LT.			1
D-3	STA. 81+43 TO 81+91, 37.5' LT.		48	
D-4	STA. 6+70, 10' LT.			1
D-5	STA. 6+70, 10' LT. TO 6+63, 17' RT.	28		
TOTALS		104	48	2



EXCAVATION	179.2	C.Y.
EMBANKMENT	49.2	C.Y.
SEEDING & MULCHING	561	S.Y.

HOPKINS ROAD