

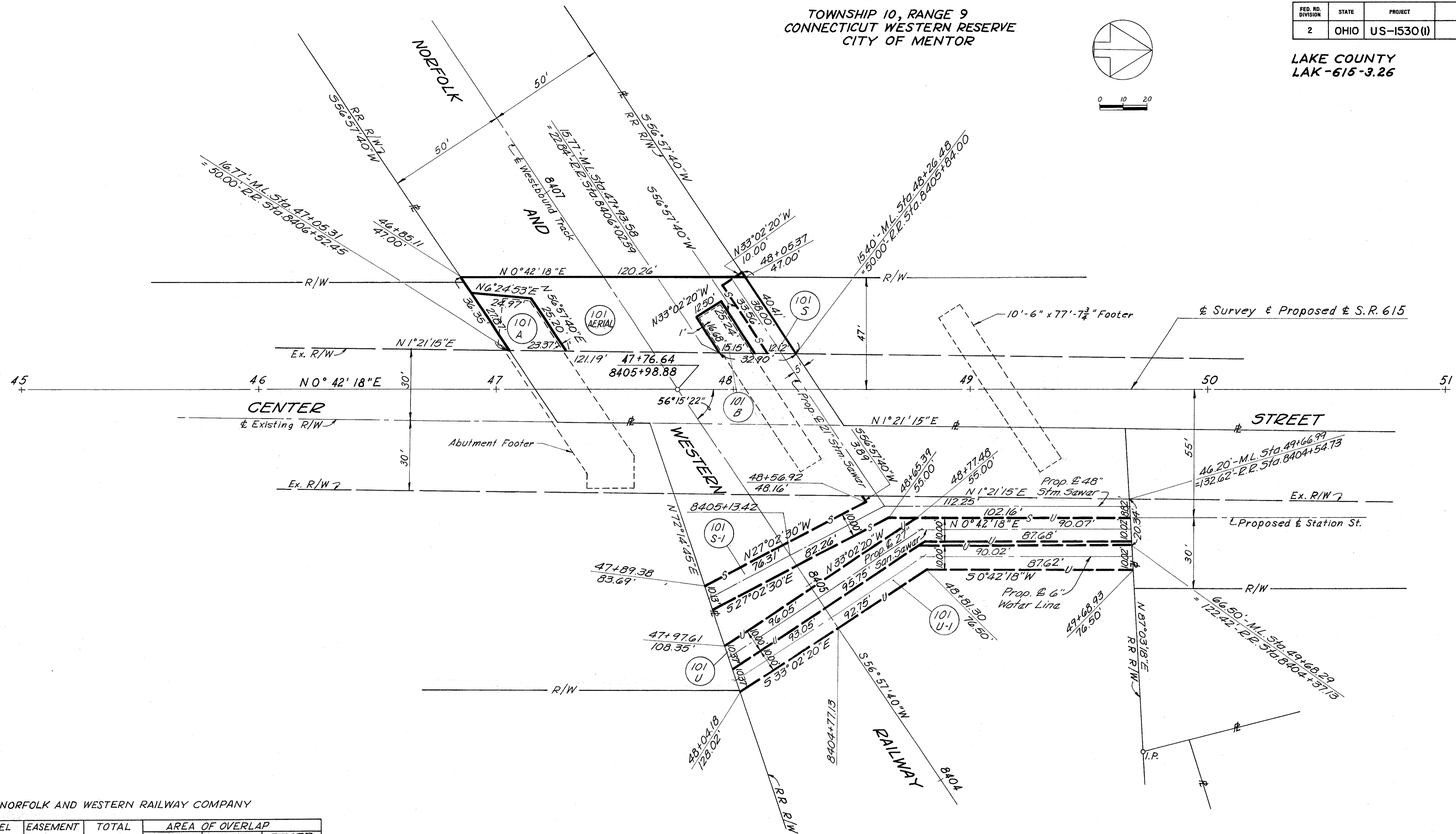
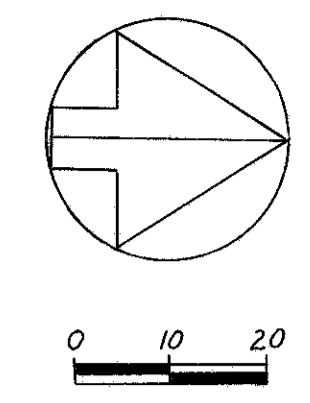
TOWNSHIP 10, RANGE 9
CONNECTICUT WESTERN RESERVE
CITY OF MENTOR

FED. RD. DIVISION	STATE	PROJECT
2	OHIO	US-1530(I)

177
181

LAKE COUNTY
LAK-615-3.26

24
28



THE NORFOLK AND WESTERN RAILWAY COMPANY

PARCEL NUMBER	EASEMENT REQUIRED	TOTAL AREA	AREA OF OVERLAP		
			HIGHWAY	AERIAL	SEWER
101-AERIAL	Aerial	3718	774		368
101-A	Highway	512		512	
101-B	Highway	262		262	
101-S	Sewer	370		368	
101-S-1	Sewer	1808			
101-U	Sewer	1848			
101-U-1	Water Line	1817			

AREA IN SQUARE FEET

COMPLETION DATE: December 19, 1968		
REV.	DATE	DESCRIPTION

RIGHT OF WAY NORFOLK & WESTERN RAILWAY