

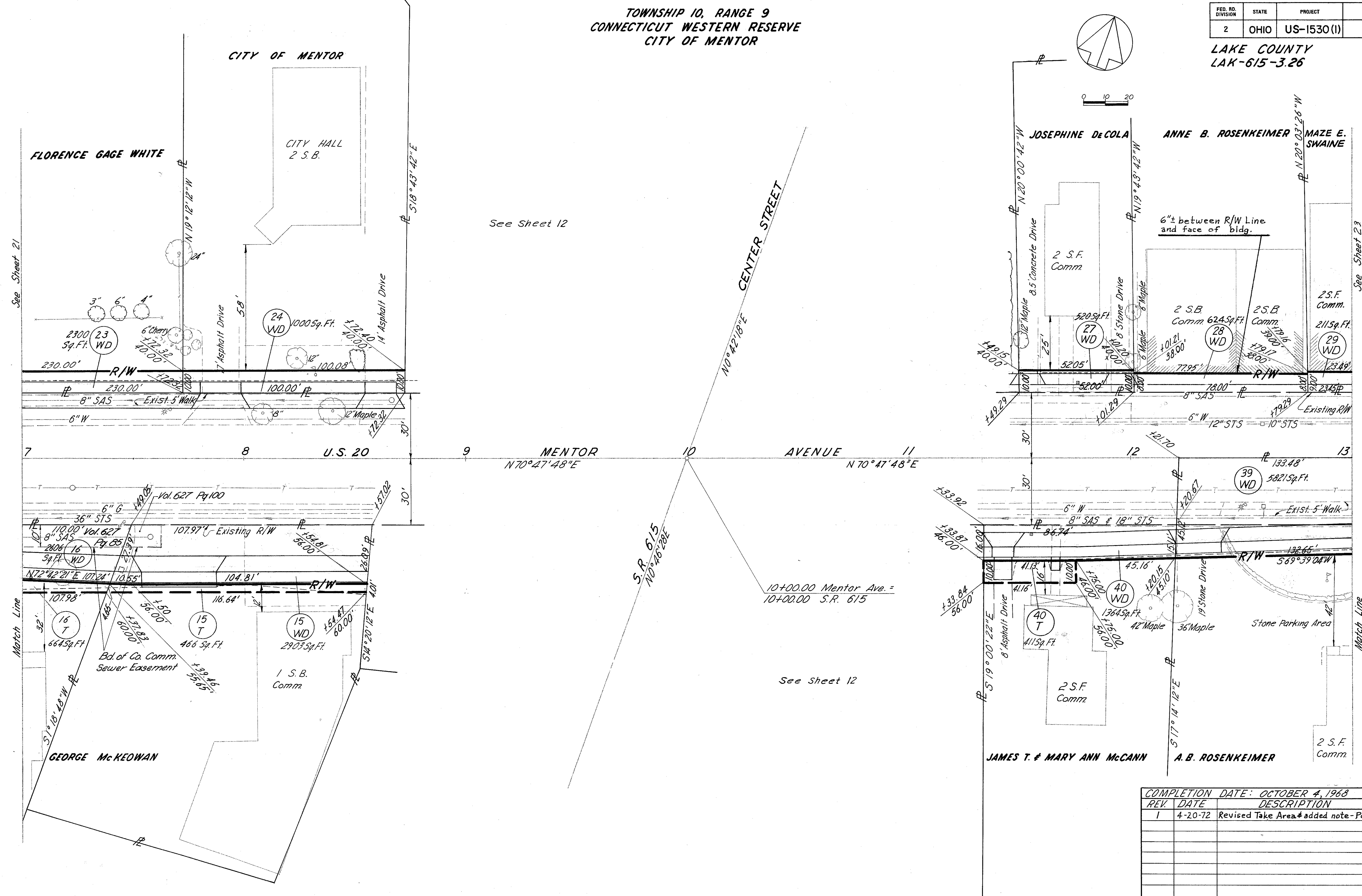
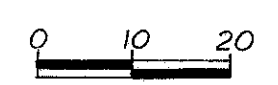
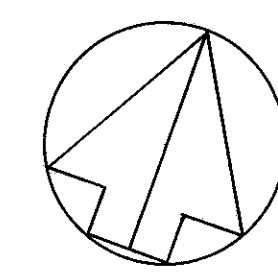
TOWNSHIP 10, RANGE 9
CONNECTICUT WESTERN RESERVE
CITY OF MENTOR

FED. RD. DIVISION	STATE	PROJECT
2	OHIO	US-1530 (I)

175
181

LAKE COUNTY
LAK-615-3.26

22
28



See Sheet 12

See Sheet 12

See Sheet 23

COMPLETION DATE: OCTOBER 4, 1968		
REV.	DATE	DESCRIPTION
1	4-20-72	Revised Take Area & added note - Fel. 28WD

RIGHT OF WAY MENTOR AVENUE STA. 7+00 TO 13+00