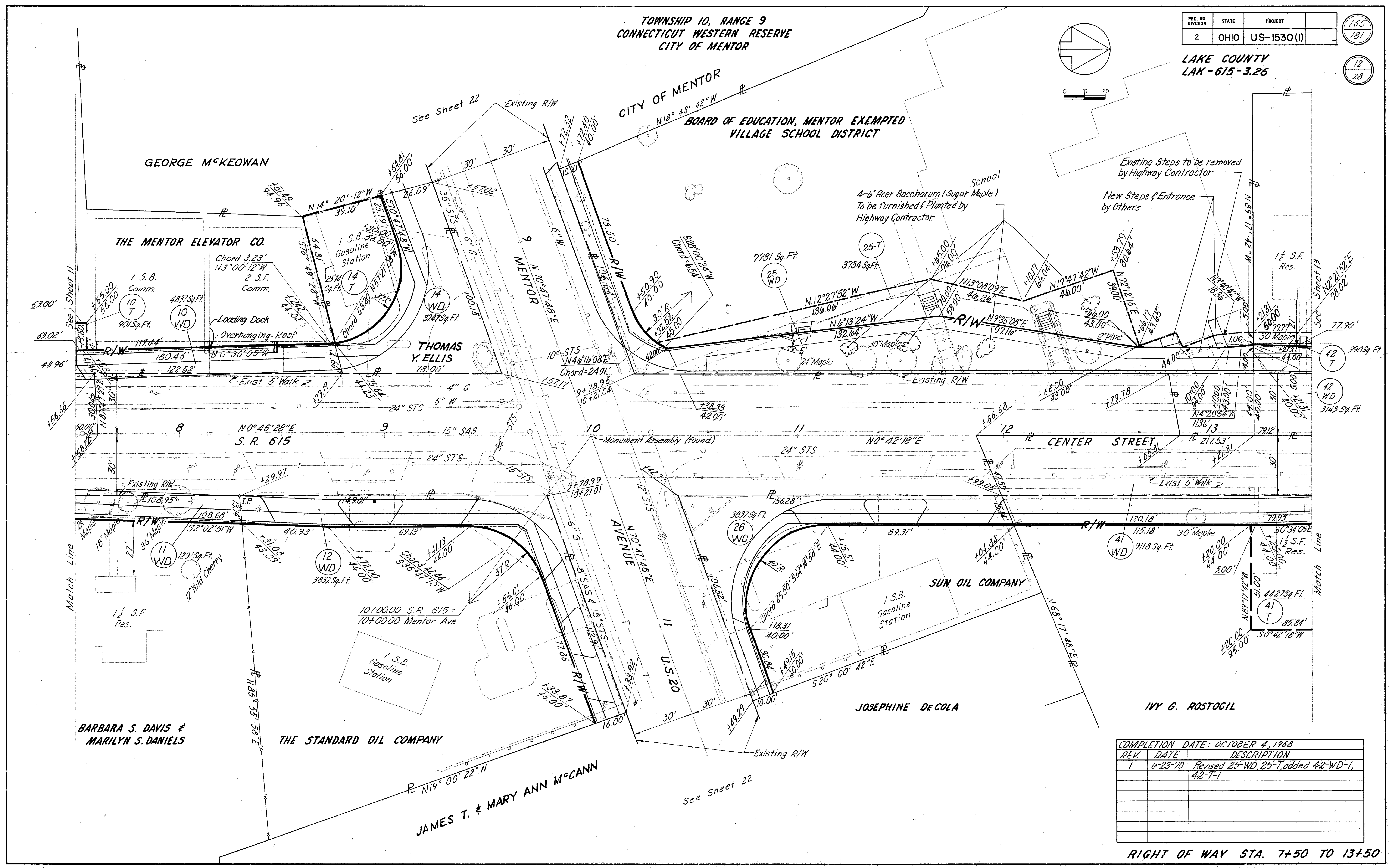
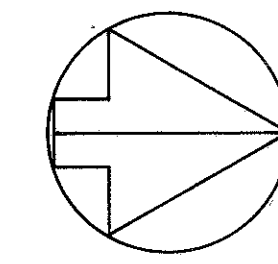


TOWNSHIP 10, RANGE 9
CONNECTICUT WESTERN RESERVE
CITY OF MENTOR

FED. RD. DIVISION	STATE	PROJECT	165
2	OHIO	US-1530 (I)	181
			12
			28

LAKE COUNTY
LAK-615-3.26



COMPLETION DATE: OCTOBER 4, 1968

REV.	DATE	DESCRIPTION
1	6-23-70	Revised 25-WD, 25-T, added 42-WD-1, 42-T-1

RIGHT OF WAY STA. 7+50 TO 13+50