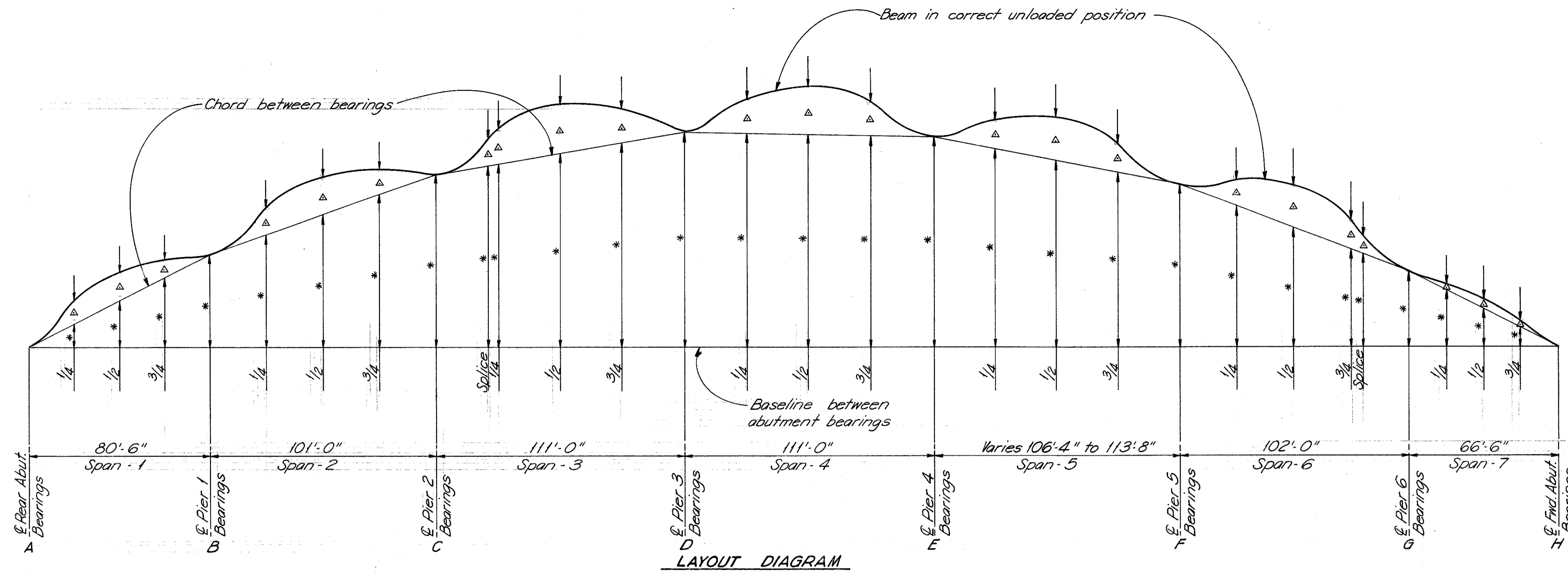


MICROFILMED  
FEB 12 1985

LAKE COUNTY  
LAK-615-3.26



LAYOUT DIAGRAM

		DEFLECTION & CAMBER																						
		Span 1			Span 2			Span 3			Span 4			Span 5			Span 6			Span 7				
SPAN POINT		1/4	1/2	3/4	1/4	1/2	3/4	Splice	1/4	1/2	3/4	1/4	1/2	3/4	1/4	1/2	3/4	1/4	1/2	3/4	Splice	1/4	1/2	3/4
LINE 1	Weight of Steel	1/16"	3/32"	1/32"	1/32"	3/32"	1/32"	1/16"	1/16"	1/8"	1/16"	1/16"	1/8"	1/16"	1/16"	1/8"	1/16"	1/16"	1/8"	1/16"	1/16"	1/8"	1/16"	1/16"
	Remaining D.L.	1/16"	15/32"	3/16"	1/4"	7/16"	3/16"	11/32"	3/8"	11/16"	11/32"	5/16"	13/32"	5/16"	9/32"	9/16"	9/32"	5/8"	3/8"	9/32"	1/32"	1/32"	3/16"	3/16"
	Vertical Curve Camber	21/32"	11/8"	21/32"	19/16"	19/16"	19/16"	19/16"	21/8"	19/16"	21/8"	19/16"	21/8"	19/16"	21/8"	19/16"	21/8"	19/16"	21/8"	19/16"	21/8"	19/16"	21/8"	19/16"
LINE 2	Weight of Steel	1/16"	3/32"	1/32"	1/32"	3/32"	1/32"	1/16"	1/16"	1/8"	1/16"	1/16"	1/8"	1/16"	1/16"	1/8"	1/16"	1/16"	1/8"	1/16"	1/16"	1/8"	1/16"	1/16"
	Remaining D.L.	1/16"	1/2"	7/32"	1/4"	15/32"	3/16"	3/8"	7/16"	25/32"	3/8"	11/32"	11/16"	11/32"	5/16"	5/8"	5/16"	5/8"	5/16"	5/8"	5/16"	1/32"	1/32"	3/16"
	Vertical Curve Camber	21/32"	11/8"	21/32"	19/16"	19/16"	19/16"	19/16"	21/8"	19/16"	21/8"	19/16"	21/8"	19/16"	21/8"	19/16"	21/8"	19/16"	21/8"	19/16"	21/8"	19/16"	21/8"	19/16"
LINE 3	Weight of Steel	1/16"	3/32"	1/32"	1/32"	3/32"	1/32"	1/16"	1/16"	1/8"	1/16"	1/16"	1/8"	1/16"	1/16"	1/8"	1/16"	1/16"	1/8"	1/16"	1/16"	1/8"	1/16"	1/16"
	Remaining D.L.	1/16"	1/2"	7/32"	1/4"	15/32"	3/16"	3/8"	7/16"	25/32"	3/8"	11/32"	11/16"	11/32"	5/16"	5/8"	5/16"	5/8"	5/16"	5/8"	5/16"	1/32"	1/32"	3/16"
	Vertical Curve Camber	21/32"	11/8"	21/32"	19/16"	19/16"	19/16"	19/16"	21/8"	19/16"	21/8"	19/16"	21/8"	19/16"	21/8"	19/16"	21/8"	19/16"	21/8"	19/16"	21/8"	19/16"	21/8"	19/16"
LINE 4	Weight of Steel	1/16"	3/32"	1/32"	1/32"	3/32"	1/32"	1/16"	1/16"	1/8"	1/16"	1/16"	1/8"	1/16"	1/16"	1/8"	1/16"	1/16"	1/8"	1/16"	1/16"	1/8"	1/16"	1/16"
	Remaining D.L.	1/16"	1/2"	7/32"	1/4"	15/32"	3/16"	3/8"	7/16"	25/32"	3/8"	11/32"	11/16"	11/32"	5/16"	5/8"	5/16"	5/8"	5/16"	5/8"	5/16"	1/32"	1/32"	3/16"
	Vertical Curve Camber	21/32"	11/8"	21/32"	19/16"	19/16"	19/16"	19/16"	21/8"	19/16"	21/8"	19/16"	21/8"	19/16"	21/8"	19/16"	21/8"	19/16"	21/8"	19/16"	21/8"	19/16"	21/8"	19/16"
LINE 5	Weight of Steel	1/16"	3/32"	1/32"	1/32"	3/32"	1/32"	1/16"	1/16"	1/8"	1/16"	1/16"	1/8"	1/16"	1/16"	1/8"	1/16"	1/16"	1/8"	1/16"	1/16"	1/8"	1/16"	1/16"
	Remaining D.L.	1/16"	1/2"	7/32"	1/4"	15/32"	3/16"	3/8"	7/16"	25/32"	3/8"	11/32"	11/16"	11/32"	5/16"	5/8"	5/16"	5/8"	5/16"	5/8"	5/16"	1/32"	1/32"	3/16"
	Vertical Curve Camber	21/32"	11/8"	21/32"	19/16"	19/16"	19/16"	19/16"	21/8"	19/16"	21/8"	19/16"	21/8"	19/16"	21/8"	19/16"	21/8"	19/16"	21/8"	19/16"	21/8"	19/16"	21/8"	19/16"
LINE 6	Weight of Steel	1/16"	3/32"	1/32"	1/32"	3/32"	1/32"	1/16"	1/16"	1/8"	1/16"	1/16"	1/8"	1/16"	1/16"	1/8"	1/16"	1/16"	1/8"	1/16"	1/16"	1/8"	1/16"	1/16"
	Remaining D.L.	3/8"	15/32"	3/16"	7/32"	7/16"	3/16"	11/32"	13/32"	11/16"	3/8"	1/4"	11/32"	1/4"	13/32"	3/4"	13/32"	3/4"	13/32"	7/32"	1/32"	11/32"	1/32"	3/16"
	Vertical Curve Camber	21/32"	11/8"	21/32"	19/16"	19/16"	19/16"	19/16"	21/8"	19/16"	21/8"	19/16"	21/8"	19/16"	21/8"	19/16"	21/8"	19/16"	21/8"	19/16"	21/8"	19/16"	21/8"	19/16"

▲ Required Camber  
\* Layout Dimensions

		LAYOUT DIMENSIONS																															
POINT		A	1/4	1/2	3/4	B	1/4	1/2	3/4	C	Splice	1/4	1/2	3/4	D	1/4	1/2	3/4	E	1/4	1/2	3/4	F	1/4	1/2	3/4	G	1/4	1/2	3/4	H		
LINE 1	0"	8 7/32"	14 7/16"	20 3/8"	28 1/4"	34 1/2"	41 1/8"	46 3/4"	51 1/2"	54 3/4"	55 3/8"	59 3/8"	61 1/8"	64 1/2"	64 1/2"	64 1/2"	64 1/2"	64 1/2"	63 3/4"	63 3/4"	51 1/2"	56 3/8"	52 3/8"	40 1/16"	42 1/4"	36 3/8"	210 3/8"	28 3/8"	22 1/8"	18 3/8"	11 7/8"	6 23/32"	0"
LINE 2	0"	8 7/32"	14 7/16"	20 3/8"	28 1/4"	34 1/2"	41 1/8"	46 3/4"	51 1/2"	55"	55 3/8"	59 3/8"	61 1/8"	64 1/2"	64 1/2"	64 1/2"	64 1/2"	64 1/2"	63 3/4"	63 3/4"	51 1/2"	56 3/8"	52 3/8"	49 3/8"	41 3/8"	36 1/8"	210 3/8"	28 3/8"	22 1/8"	17 1/8"	11 7/8"	6 23/32"	0"
LINE 3	0"	8 7/32"	14 7/16"	20 3/8"	28 1/4"	34 1/2"	41 1/8"	46 3/4"	51 1/2"	55"	55 3/8"	59 3/8"	61 1/8"	64 1/2"	64 1/2"	64 1/2"	64 1/2"	64 1/2"	63 3/4"	63 3/4"	51 1/2"	56 3/8"	52 3/8"	49 3/8"	41 3/8"	35 1/8"	210 3/8"	28 3/8"	21 3/8"	17 1/8"	10 7/8"	6 23/32"	0"
LINE 4	0"	8 7/32"	14 7/16"	20 3/8"	28 1/4"	34 1/2"	41 1/8"	46 3/4"	51 1/2"	55"	55 3/8"	59 3/8"	61 1/8"	64 1/2"	64 1/2"	64 1/2"	64 1/2"	64 1/2"	63 3/4"	63 3/4"	51 1/2"	56 3/8"	52 3/8"	49 3/8"	41 3/8"	35 1/8"	210 3/8"	27 3/8"	21 3/8"	16 3/8"	10 7/8"	6 5/8"	0"
LINE 5	0"	8 7/32"	14 7/16"	20 3/8"	28 3/32"	34"	41 1/8"	46 1/2"	51 1/2"	54 5/8"	55 1/2"	59 3/8"	61"	64 1/2"	64 1/2"	64 1/2"	64 1/2"	64 1/2"	63 1/2"	63 1/2"	510 3/8"	55 1/2"	51 1/4"	48 3/8"	40 3/8"	34 3/8"	28 3/8"	26 1/8"	20 3/8"	16 3/8"	10 3/8"	6 5/8"	0"
LINE 6	0"	8 7/32"	14 7/16"	20 3/8"	28 1/4"	33 3/8"	41 1/8"	46 3/4"	51 1/2"	54 1/2"	55 1/2"	59 1/8"	61"	64 1/2"	64 1/2"	64 1/2"	64 1/2"	63 3/8"	63 3/8"	63 1/8"	510 3/8"	55 1/2"	50 3/4"	47 3/8"	41 3/8"	33 3/8"	27 3/8"	26 3/8"	20 3/8"	15 3/8"	11 3/8"	6"	0"

BURGESS & NIPLE LIMITED — CONSULTING ENGINEERS  
COLUMBUS, OHIO 19/24

SUPERSTRUCTURE DETAILS  
BRIDGE NO. LAK-615-0402  
OVER  
N&W RAILWAY & P-C RAILROAD

LAKE COUNTY STA 47+28.12  
54+16.22

DESIGNED	DRAWN	TRACED	CHECKED	REVIEWED DATE	REVISED
WCR	OW		KED	WCR 4/14/69	