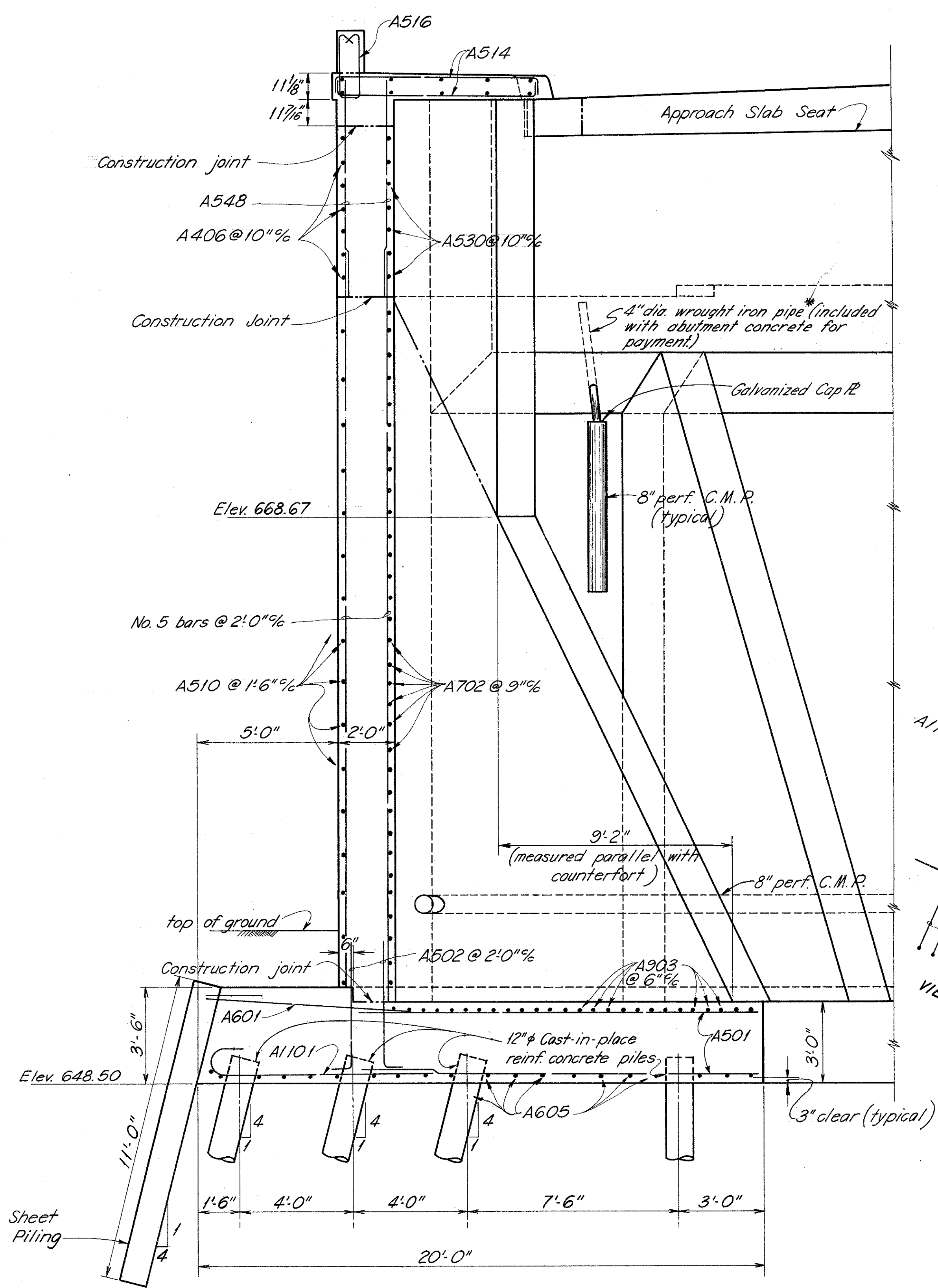


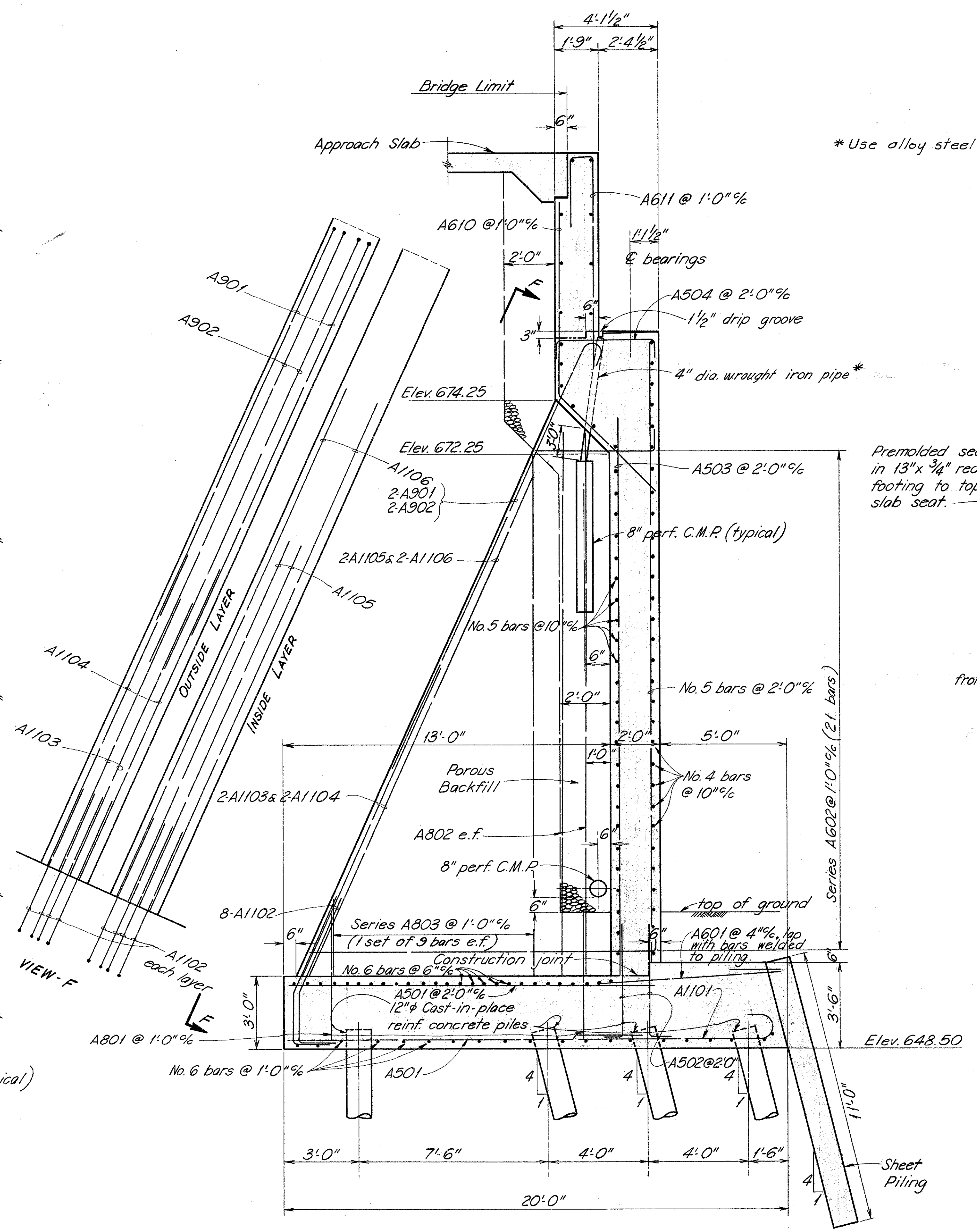
MICROFILMED  
FEB 12 1985

FED. ROAD DIV. NO.	STATE	FED. AID PROJ. NO.	TYPE FUNDS	137 181
2	OHIO			

LAKE COUNTY  
LAK-615-3.26



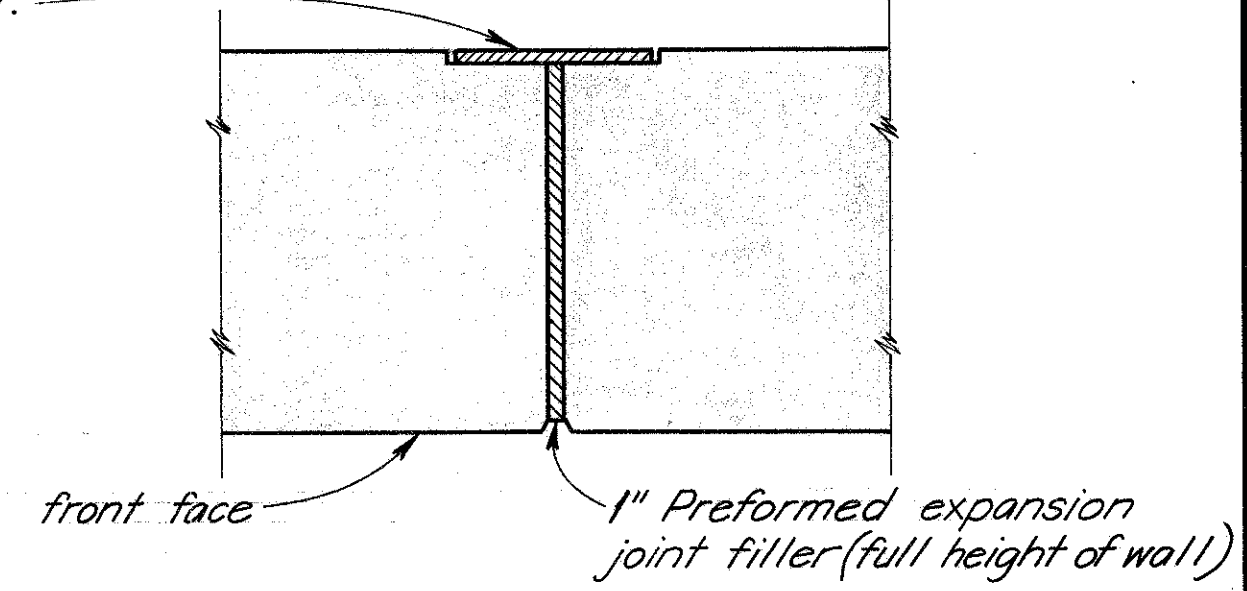
VIEW - A  
(Porous backfill not shown. See Section-A)



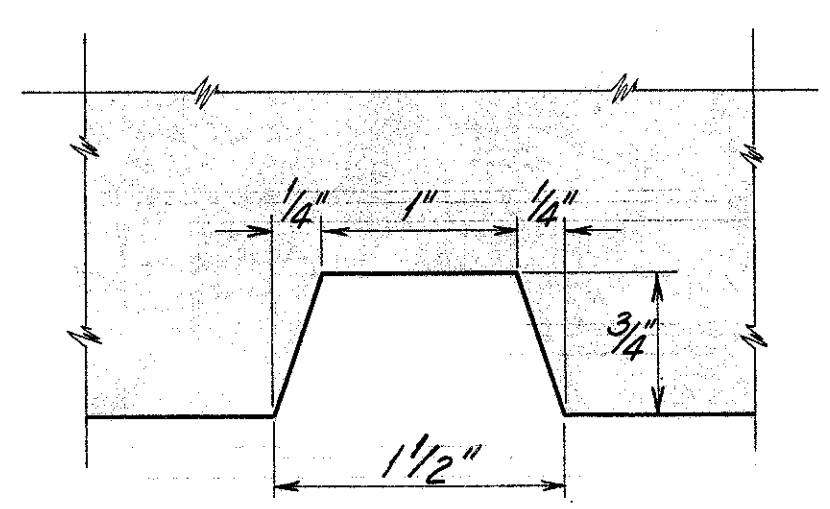
SECTION - A

\*Use alloy steel or galvanized steel.

Premolded sealing strip in 13"x 3/4" recess (top of footing to top of approach slab seat.)



EXPANSION JOINT DETAIL



RUSTICATION GROOVE

BURGESS & NIPLE LIMITED — CONSULTING ENGINEERS  
COLUMBUS 12, OHIO

BRIDGE NO. LAK-615-0402  
OVER  
N&W RAILWAY & P-C RAILROAD  
LAKE COUNTY  
STA. 47+28.12  
54+16.22

DESIGNED	DRAWN	TRACED	CHECKED	REVIEWED DATE	REVISED
WBR	EW		KED	WBR 4/14/69	

DEC 11 1970 JUN 26 1970