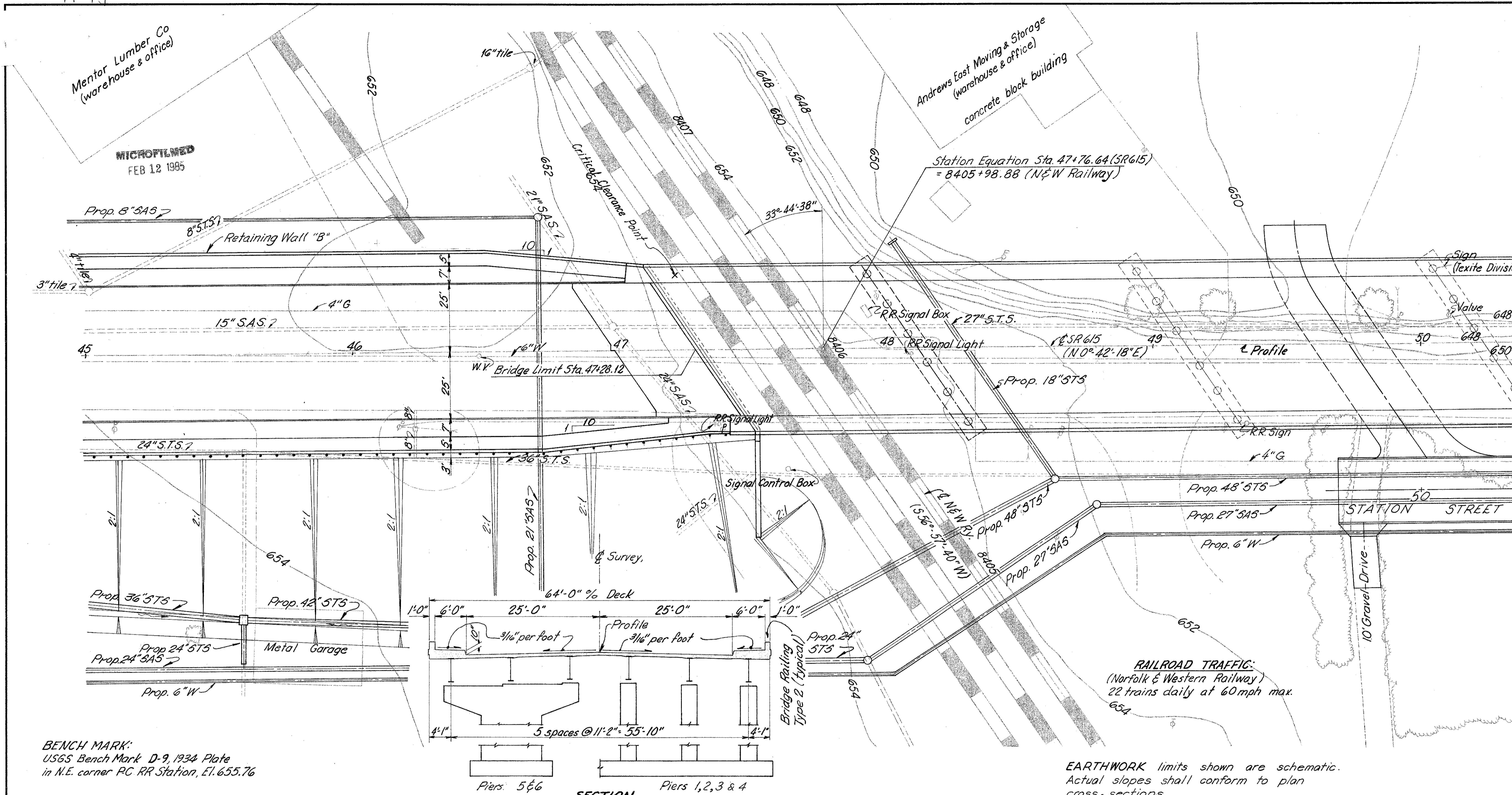


LAKE COUNTY
LAK-615-3.26



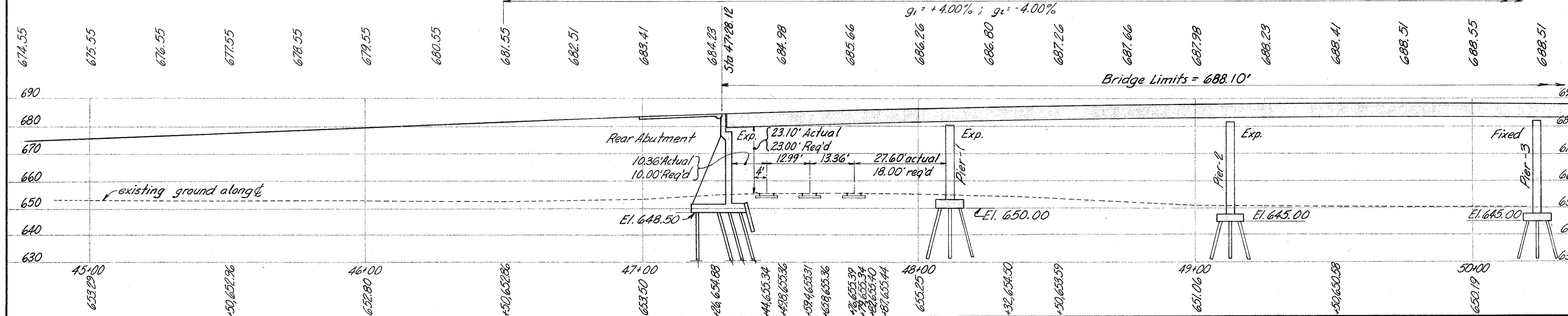
NOTE: Estimated pile lengths are as follows: Rear Abutment=25'; Piers 1 thru 4=25'; Piers 5 & 6=20'; Forward Abutment=35'

BENCH MARK:
USGS Bench Mark D-9, 1934 Plate
in N.E. corner PC RR Station, El. 655.76

EARTHWORK limits shown are schematic.
Actual slopes shall conform to plan cross-sections.

RAILROAD TRAFFIC:
(Norfolk & Western Railway)
22 trains daily at 60mph max.

SECTION
700' V.C. P.V.I. Sta 50+00, El. 695.55
 $g_1 = +4.00\%$; $g_2 = -4.00\%$



PROPOSED STRUCTURE

TYPE: 7 span continuous built-up steel girder with reinforced concrete deck and substructure

SPANS: 80'-6", 101'-0", 111'-0", 111'-0", 110'-0", 102'-0", 66'-6" % bearings

ROADWAY: 50'-0" face/face 6'-0" sidewalk curbs with Bridge Sidewalk Railing

LOADING: HS20-44

WEARING SURFACE: 1" monolithic

APPROACH SLABS: AS-1-67 (30 ft. long)

SKEW: 33°-44'-38" R.F. at Rear Abutment, Pier-1, Pier-2, Pier-3 & Pier-4; 38°-38'-08" R.F. at Pier-5, Pier-6 and Forward Abutment

SUPERELEVATION: none

ALIGNMENT: tangent

AVERAGE DAILY TRAFFIC: 17,168 (1986)

BURGESS & NIPLE LIMITED — CONSULTING ENGINEERS
COLUMBUS 12, OHIO 1/24

SITE PLAN
Bridge No. LAK-615-0402
N&W RAILWAY over PC RAILROAD
Scale: 1"=20' Sta. 47+28.12
LAKE COUNTY Sta. 54+16.22

DESIGNED	DRAWN	TRACED	CHECKED	REVIEWED DATE	REVISED
WRB	WRB		KED	WCR 7-23-68	