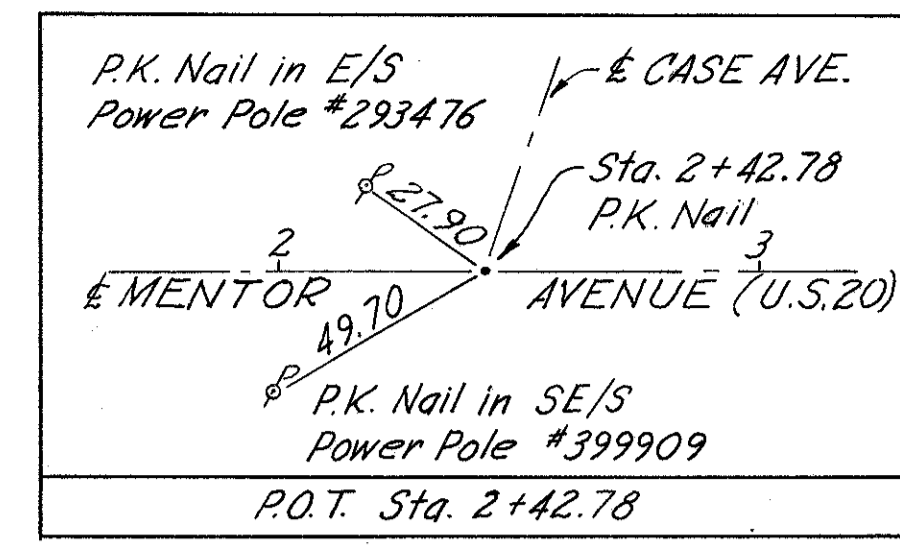
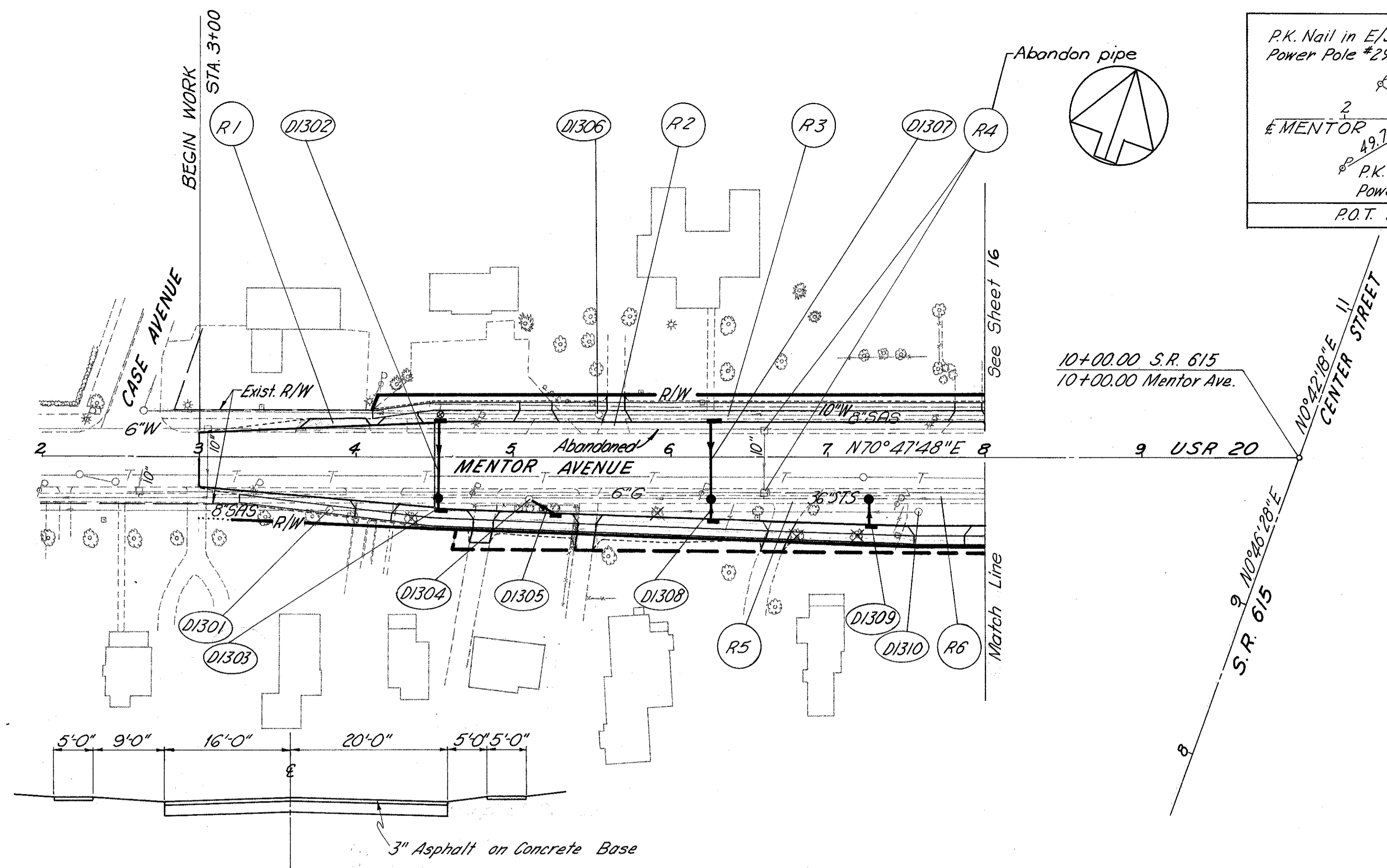


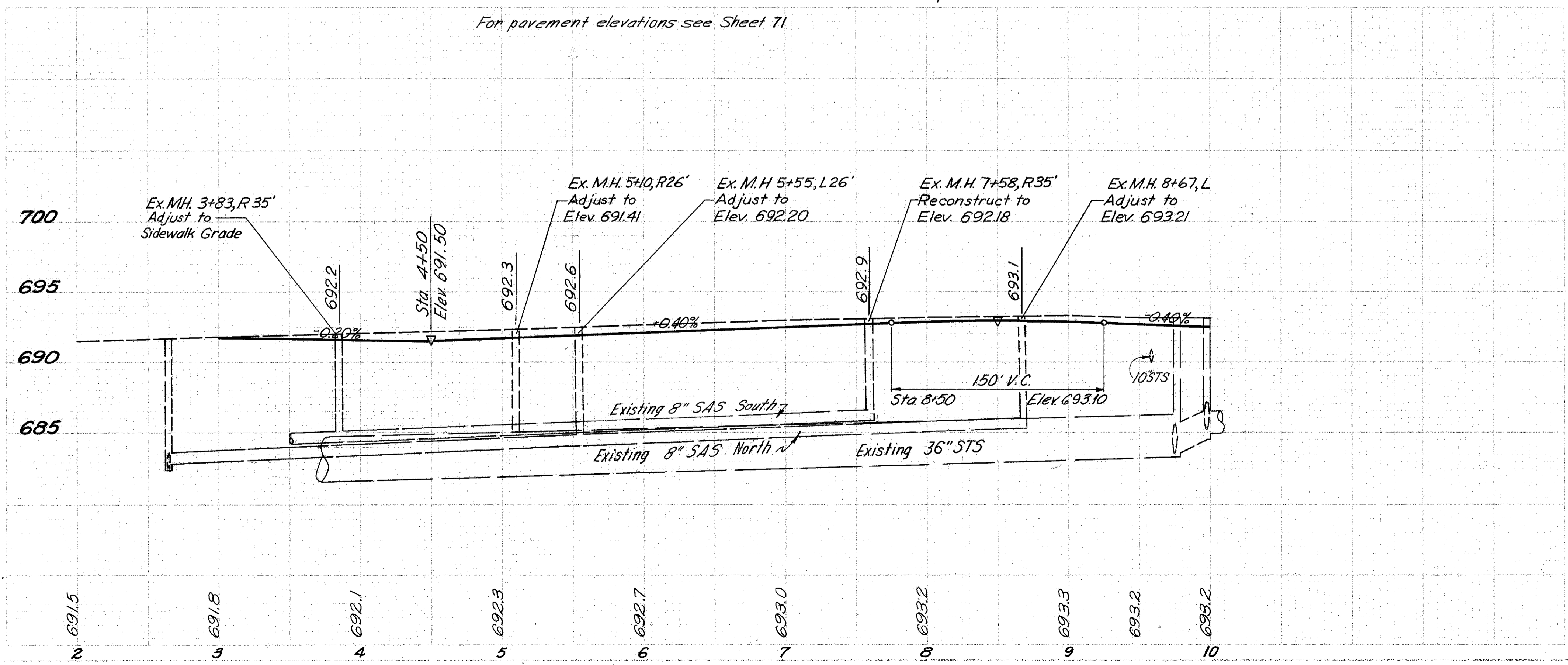
LAKE COUNTY  
LAK-615-3.26



DRAINAGE		7221				Y-060	
REF.	LOCATION	L.F.	EA.	EA.	EA.	EA.	EA.
D1301	3+83, R35'						1
D1302	4+52, L23' to R26'	51	1				
D1303	4+52, R33' to R26'	9	1		1		
D1304	5+10, R26'					1	
D1305	5+25, R356' to 5+10, R26'	19	1				
D1306	5+55, L26'						1
D1307	6+25, L23' to 6+25, R26'	51	1	1			
D1308	6+25, R39' to 6+25, R26'	15	1		1		
D1309	7+25, R425' to 7+25, R26'	18	1		1		
D1310	7+58, R35'						1
TOTAL		163	5	1	3	1	2 1

For cross sections see sheet 105  
For sewer profiles see sheet 39

For pavement elevations see Sheet 71



ROADWAY		202		
REF.	LOCATION	EA.	S.Y.	S.F.
R1	3+60 to 4+10, L		48	
R2	5+53 to 5+75, L		19	
R3	4+10 to 8+00, L			1950
R4	6+60, L & R	2		
R5	3+25 to 7+52, R			2135
R6	7+52 to 8+00, R		54	
	3+00 to 8+00			2000
TOTAL		2	2121	4085

PLAN & PROFILE MENTOR AVE. 2+00 TO 10+00