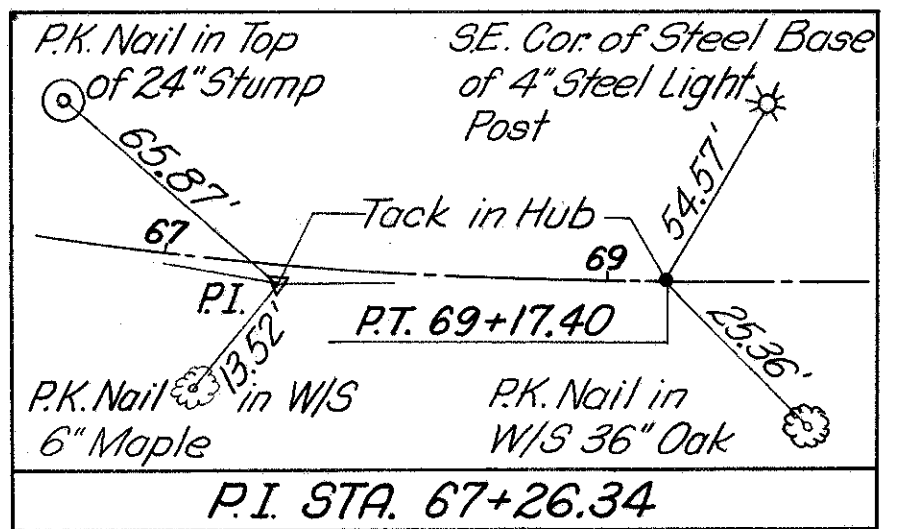
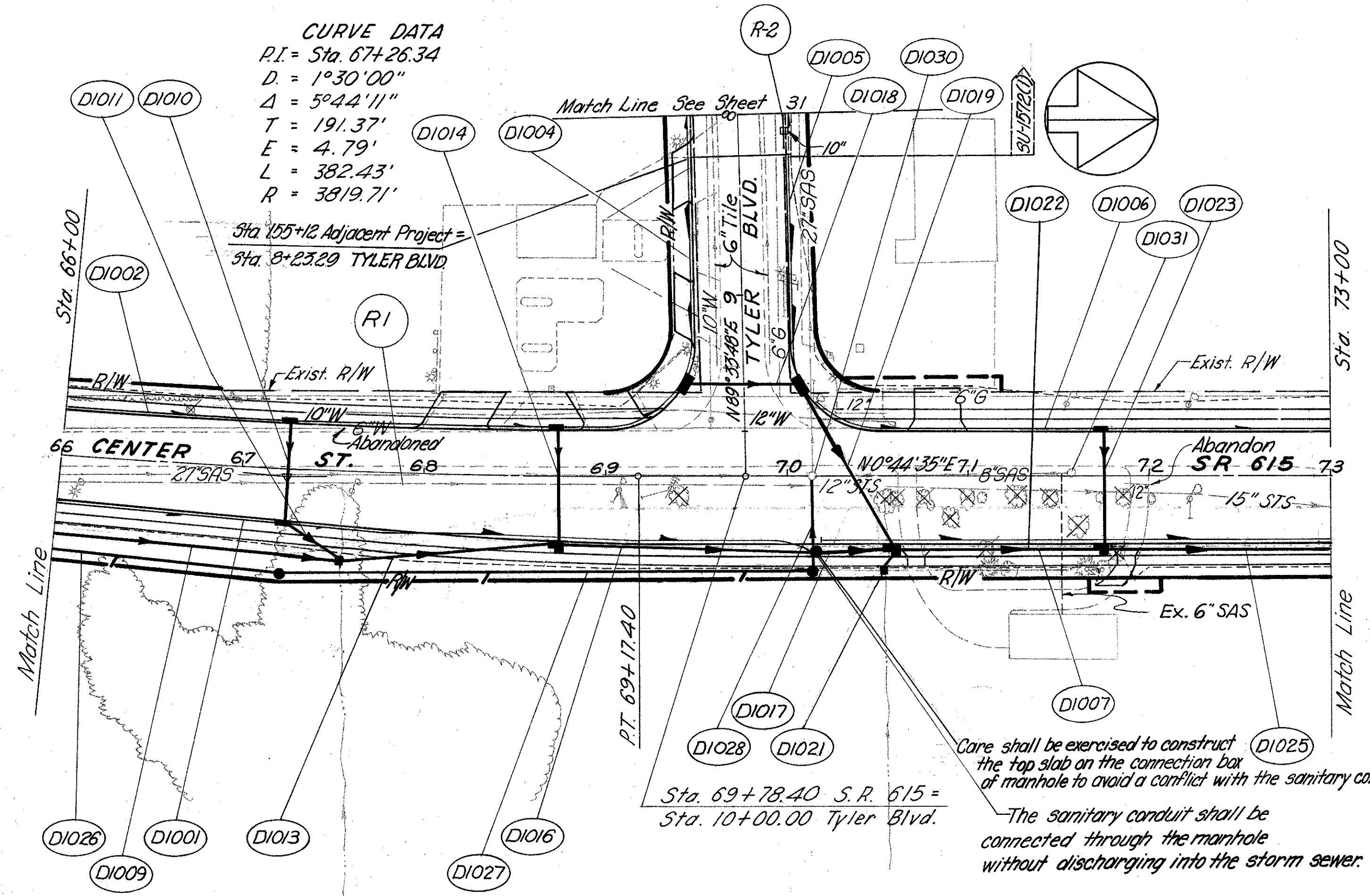


BENCH MARK
+ in N. End of E. Pump Island
EIS Standard Oil Serv. Station
68+70, 70'Lt. Elev. 638.61

LAKE COUNTY
LAK-615-3.26

CURVE DATA
P.I. = Sta. 67+26.34
D = 1°30'00"
Δ = 5°44'11"
T = 191.37'
E = 4.79'
L = 382.43'
R = 3819.71'

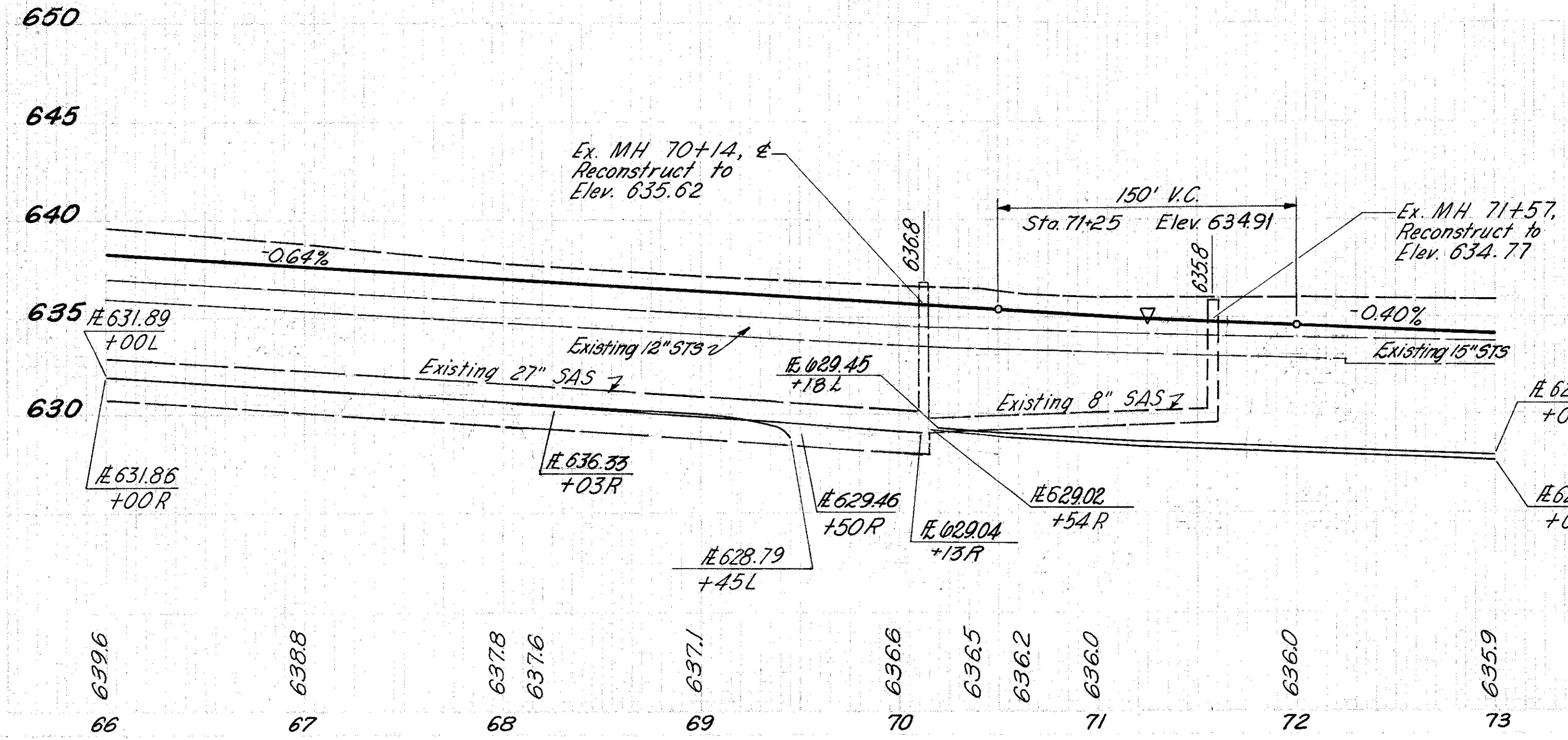


REF.	LOCATION	603		7221		604		605		604		605		604		605		604		605	
		L.F.	L.F.	L.F.	L.F.	EA.	EA.	EA.	EA.	L.F.	L.F.	EA.	EA.	L.F.	L.F.	EA.	EA.	L.F.	L.F.	EA.	EA.
D1001	66+00 to 70+15R																				
D1002	66+00 to 69+45, L																				
D1004	8+23.29 to 9+48, R(T)																				
D1005	8+23.29 to 9+49, L(T)																				
D1006	70+15 to 73+00, L																				
D1007	70+17 to 73+00, R																				
D1009	66+00 R53' to 67+54 R51'			158																	
D1010	67+25 L25' to 67+25 R29.5'	56																			
D1011	67+25 R29.5' to 67+25 R49'																				
D1013	67+54 R 51' to 68+75 R 37'			123																	
D1014	68+75 L25' to 68+75 R 37'	65																			
D1016	68+75 R37' to 70+10 R41'			141																	
D1017	70+10 R41' to 70+58 R37'			42																	
D1018	9+48(T)L35' to 9+49(T)R31.5'																				
D1019	9+49(T)L31.5' to 70+58 R37'			105																	
D1021	70+58 R37' to 70+55 R53'																				
D1022	70+58 R37' to 71+75 R 37'																				
D1023	71+75 L 44' to 71+75 R 37'	65																			
D1025	71+75 R37' to 73+00 R 37'																				
D1026	66+00 R53' to 67+25 R57'																				
D1027	67+25 R57' to 70+15 R53'																				
D1028	70+15 R53' to 70+15 E																				
D1030	70+15 E																				
D1031	71+57 L2'																				
TOTAL		355	183	281	50	40	2	1	3	242	1	1540	1	1	1	2	420	53	1	2	1

(T) = Tyler Blvd. Stationing

For intersection details see sheet 68
For sewer profiles see sheet 45 #50

For pavement elevations see Sheet 68



S.R. 615
Excavation --- 4955 C.Y.
Embankment --- 38 C.Y.
Seeding & Mulching --- 1555 S.Y.

TYLER BLVD.
Excavation --- 715 C.Y.
Embankment --- 0 C.Y.
Seeding & Mulching --- 227 S.Y.

ROADWAY		202	
REF.	LOCATION	S.Y.	L.F. EA.
R1	66+00 to 73+00, R	481	700
R2	8+10, L22'		1
TOTAL		481	700