

**BENCH MARK**  
N. Rim of First SAS Manhole  
S. of N & W Railroad  
46+97, 9' Lt. Elev. 653.40

**LAKE COUNTY**  
LAK-615-3.26

**S.R. 615**  
Excavation \_\_\_\_\_ 1025 C.Y.  
Embankment \_\_\_\_\_ 24425 C.Y.  
Seeding & Mulching \_\_\_\_\_ 5306 S.Y.

**STATION ST.**  
Excavation \_\_\_\_\_ 430 C.Y.  
Embankment \_\_\_\_\_ 0 C.Y.  
Seeding & Mulching \_\_\_\_\_ 359 S.Y.

REF.	LOCATION	7221										Y-060																
		602		603		604		605		603		604		604		604												
		EA	EA	EA	EA	EA	EA	EA	EA	EA	EA	EA	EA	EA	EA	EA	EA											
D701	45+00 to 47+20, R																											
D702	45+00 to 46+89, L																											
D703	45+00 R95' to 45+58, R120'																											
D704	45+58, R100' to R120'																											
D706	45+58, R100' to 47+52, R109'																											
D707	47+52, R109' to 48+63, R50'																											
D708	51+85 (S) L10'																											
D709	48+02, L40' to 48+63, R50'																											
D710	48+63 to 50+50, R50'																											
D711	50+50, R42' to 50+50, R50'																											
D712	50+50, R66' to 50+50, R50'																											
D713	50+50 to 52+00, R50'																											
D717	45+00 to 46+70, R118'																											
D718	45+00 to 46+70, L50'																											
D719	46+70, L50' to R118'																											
D720	46+70 to 47+92, R118'																											
D721	47+92, R118' to 48+79, R60'																											
D722	48+79 to 51+75, R60'																											
D723	51+75, R60, to L32'																											
D724	51+75, L32' to 52+00, L52'																											
D725	49+69 (S) to 52+00 (S) L&R																											
<b>TOTAL</b>		0.30	24	337	194	126	108	40	20	59	1	2	3	409	422	12	170	18	168	296	140	170	122	74	1	5		1

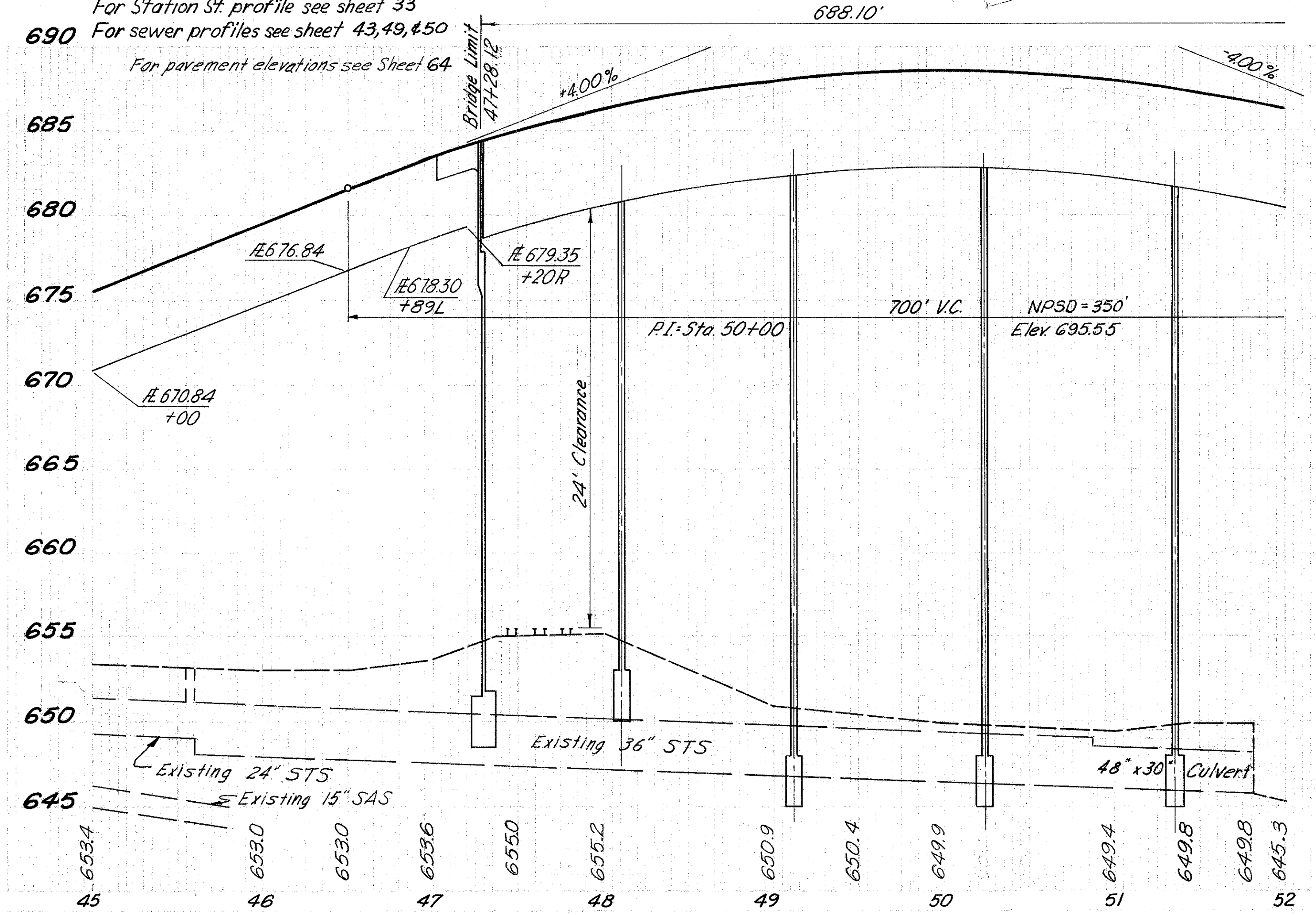
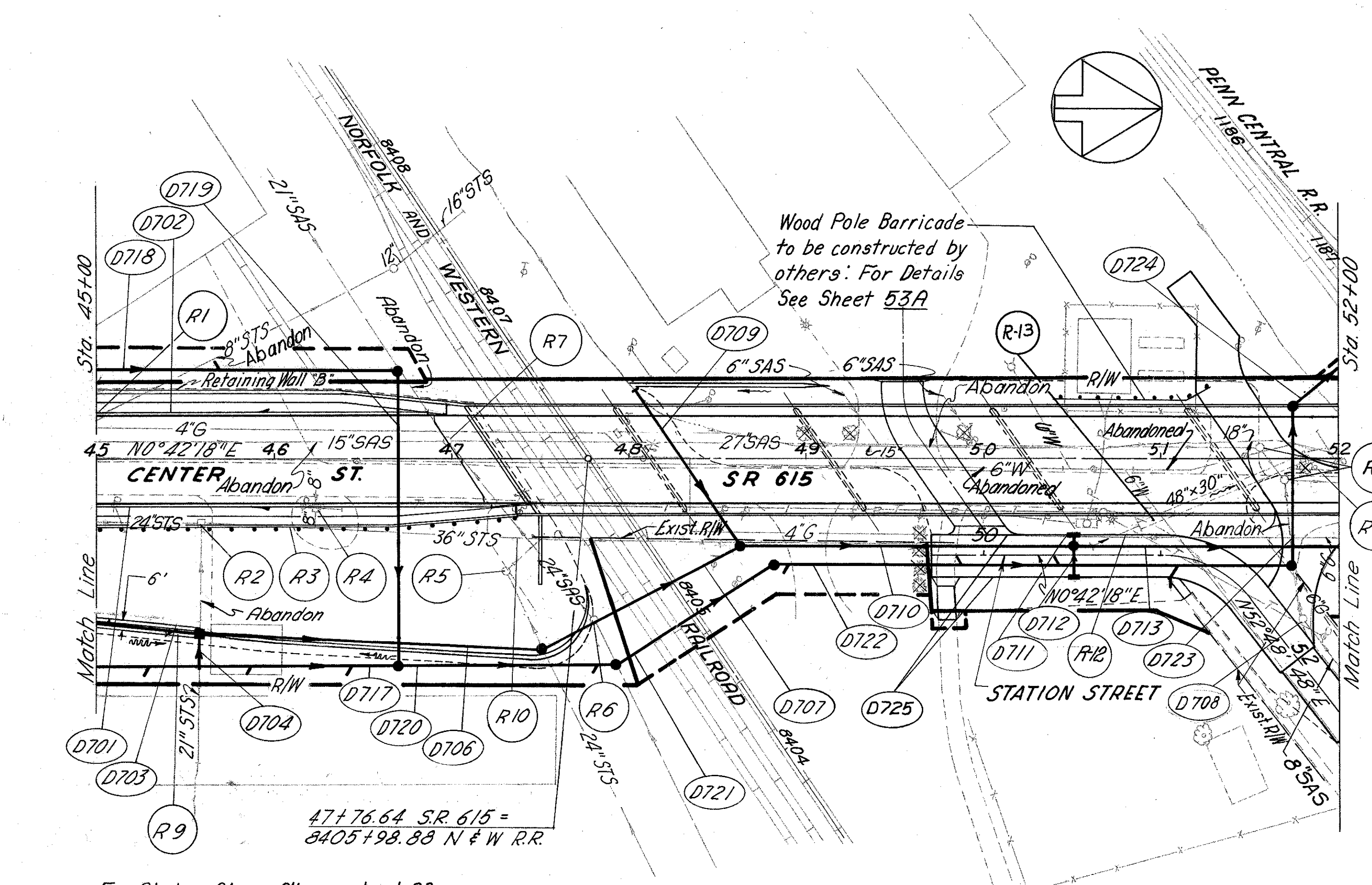
(S) = Station Street Stationing

**PROPOSED STRUCTURE**  
LAK-615-0402  
TYPE: 7 span continuous built up steel girder with reinforced concrete deck and substructure  
SPANS: 80'-6", 101'-0", 111'-0", 111'-0", 110'-0", 102'-0", 66'-6" % bearings  
ROADWAY: 50'-0" face/face 6'-0" sidewalk curbs with Bridge Sidewalk Railing  
LOADING: HS20-44  
WEARING SURFACE: 1" monolithic  
APPROACH SLABS: AS-1-07 (30 Ft. long)  
SKEW: 33°-44'-38" R.F. at Rear Abutment, Pier-1, Pier-2, Pier-3 & Pier-4; 38°-38'-08" R.F. at Pier-5, Pier-6, and Forward Abutment  
SUPERELEVATION: none  
ALIGNMENT: tangent  
AVERAGE DAILY TRAFFIC: 17,168 (1986)

REF.	LOCATION	202		606	660	605	202			
		EA	EA	L.F.	S.Y.	EA	L.F.	L.F.	Lump	
R1	45+00, L									
R2	45+59, R									
R3	45+00 to 47+44, R			244		1				
R4	46+24, R									
R5	47+30, R 63' to 47+51, R45'							74		
R6	47+81, R									
R7	46+98, L 10' to 47+93, R117								160	
R8	51+55, L 51+70, R			2						
R9	45+00 to 45+58, R				39					
R10	45+00 to 47+50, R						250			
R11	51+75 to 52+00, R							25		
R12	50+00, R45' to 50+89, R38'							30		
R-13	50+89, R38' to 51+82, R								Lump	
<b>TOTAL</b>		3	5	244	39	1	280	25	234	Lump

QUANTITY CALCULATIONS  
BY: RLR DATE: 1-31-68  
CHK: EBB DATE: 3-25-68  
SURGEON & NIPLE, LIMITED

**PLAN & PROFILE 45+00 TO 52+00**



For Station St. profile see sheet 33  
For sewer profiles see sheet 43, 49, & 50  
For pavement elevations see Sheet 64