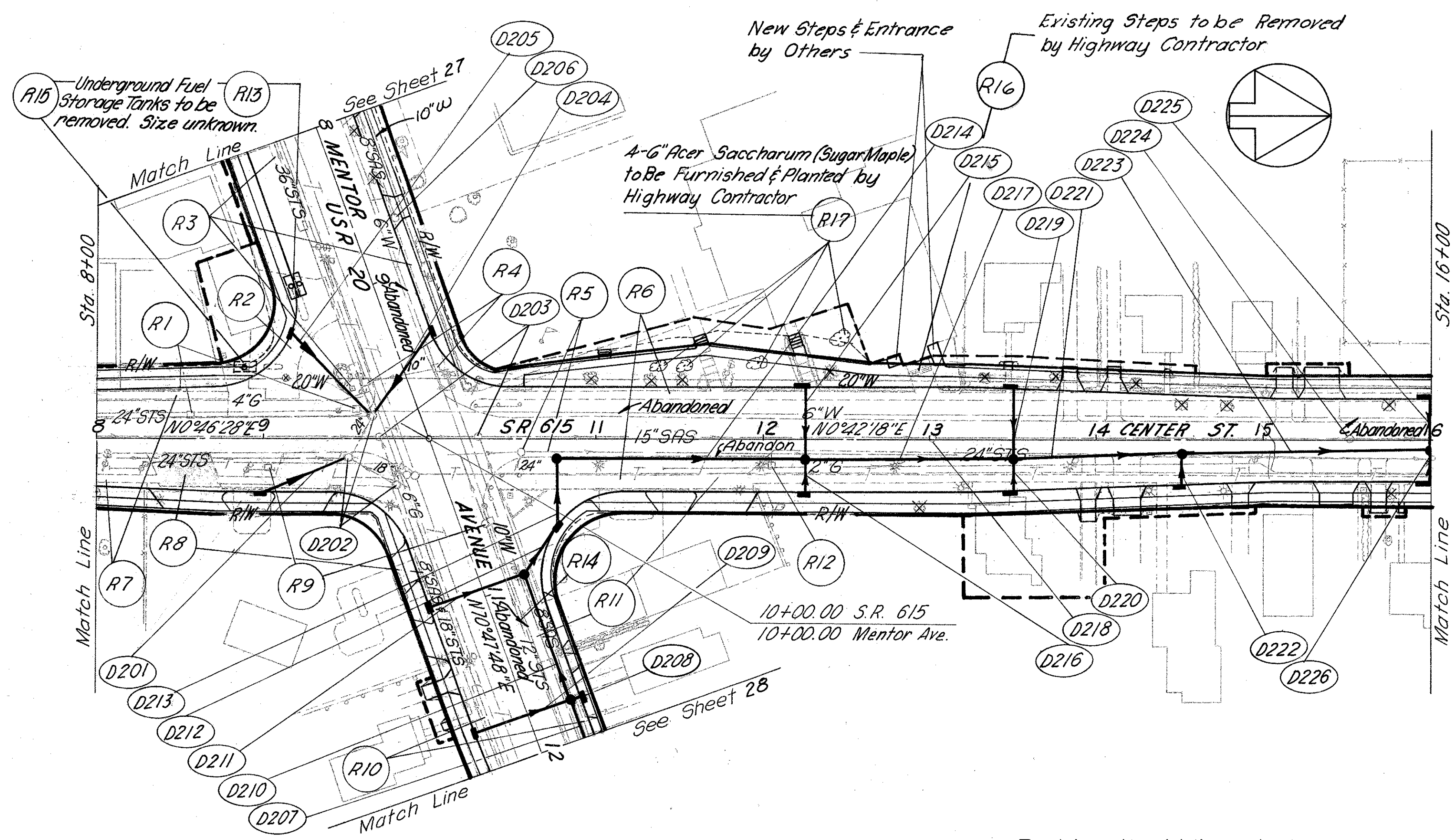
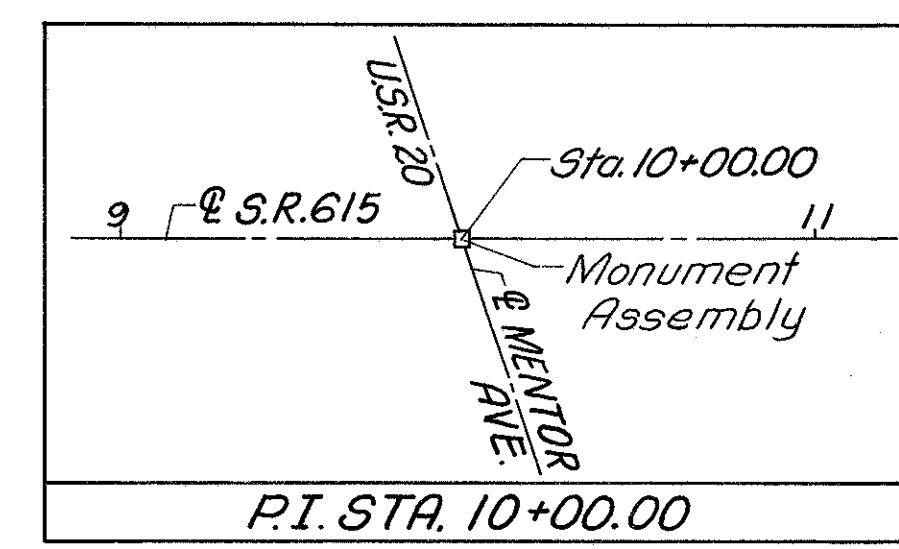


LAKE COUNTY  
LAK-615-3.26

**BENCH MARK**  
+ in N. End of Pump Island  
W/S of Sunoco Serv. Station  
11+35, 45' Rt. Elev. 693.65

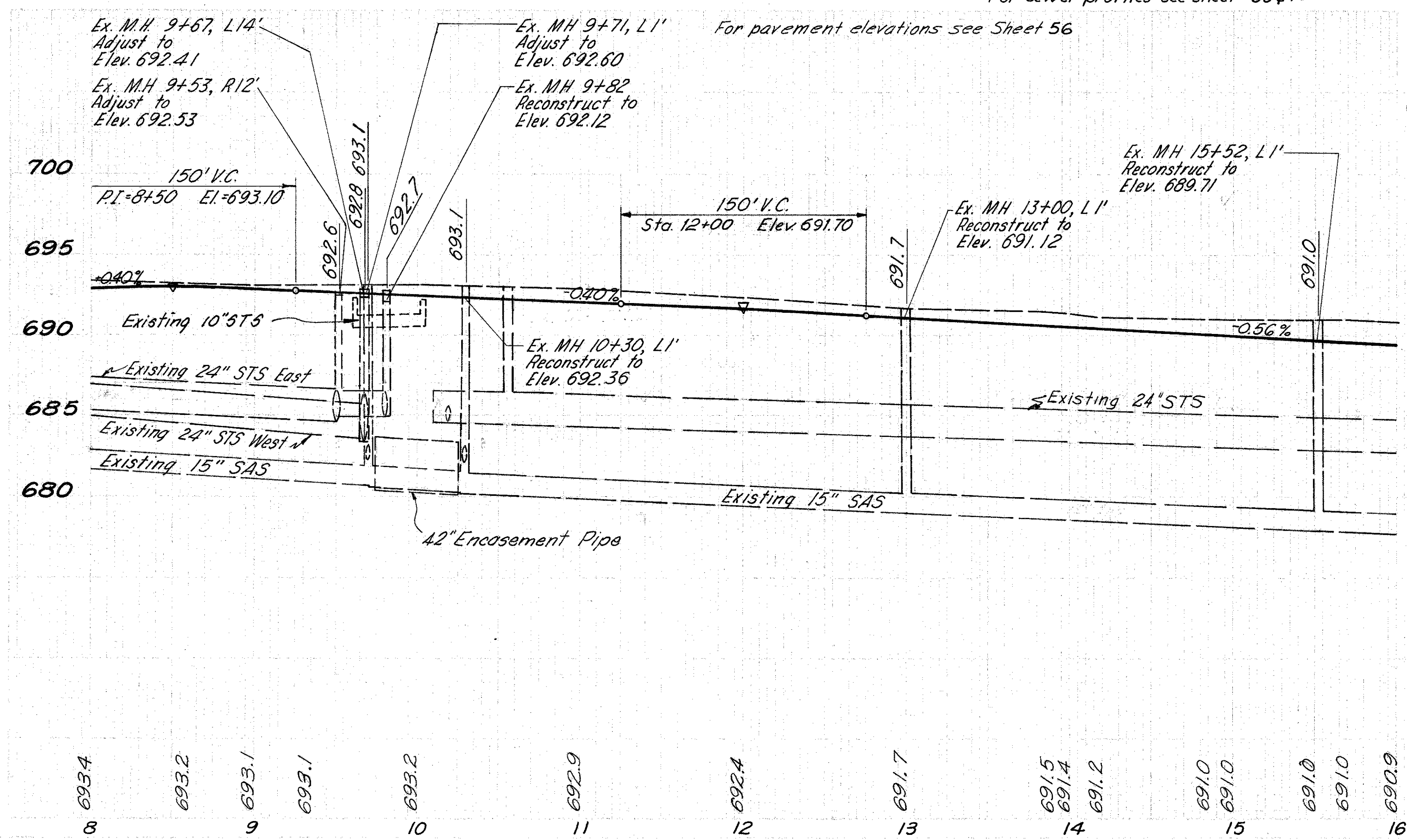


**DRAINAGE**

REF.	LOCATION	LF.	LF.	LF.	LF.	LF.	EA.	EA.	EA.	EA.	EA.	EA.	EA.	EA.	
D201	9+00, R31' to 9+51, R12'	56													
D202	9+53, R12'; 9+67, L12'; 9+82, R26'								2	1					
D203	10+29, L1'; 9+71, L1'												1	1	
D204	9+40(M), L23' to 9+05, L13'	62													
D205	9+12(M), R56' to 9+05, L13'	70													
D206	8+68(M), L27'													1	
D207	12+00(M) to 11+75 (M), L27'		25												
D208	11+75(M), L33' to 11+75 (M), L27'	8													
D209	11+75 (M), R33' to 11+75 (M), L27'	61													
D210	11+75 (M), L27' to 10+95 (M), L27'		80												
D211	10+95 (M), L33' to 10+95 (M), L27'	61													
D212	10+95 (M), L27' to 10+77, R52.5'		32												
D213	10+77, R52.5' to 10+77, R12'		41												
D214	10+77 to 12+25, R12'			148											
D215	12+25, L31' to 12+25, R12'	44													
D216	12+25, R31' to 12+25, R12'	20													
D217	12+25, R12' to 13+50, R11'			125											
D218	13+01, L1'													1	
D219	13+50, L30' to 13+50, R11'	43													
D220	13+50, R30' to 13+50, R11'	20													
D221	13+50, R11' to 14+50, R8'				100										
D222	14+50, R26.5' to 14+50, R8'	20													
D223	14+50, R8' to 16+00, R6'			150											
D224	15+52, L1'													1	
D225	16+00, L25' to 16+00, R6'	32													
D226	16+00, R25' to 16+00, R6'	20													
<b>TOTAL</b>		<b>517</b>	<b>105</b>	<b>73</b>	<b>273</b>	<b>250</b>	<b>2</b>	<b>6</b>	<b>5</b>	<b>6</b>	<b>2</b>	<b>1</b>	<b>1</b>	<b>2</b>	<b>3</b>

(M) = Mentor Ave. stationing

For intersection details see sheet 57  
For sewer profiles see sheet 39#40



S.R. 615		
Excavation	3802	C.Y.
Embankment	0	C.Y.
Seeding & Mulching	894	S.Y.
MENTOR AVE.		
Excavation	4952	C.Y.
Embankment	34	C.Y.
Seeding & Mulching	1970	S.Y.

REF.	LOCATION	202		202		Spec. 663		
		Catch Basin Removed	Existing Structures Removed (Steps)	Manhole Removed	Pavement Removed	Pipe Removed (24" & Under)	Sidewalk Removed	Removal of Existing Storage Tanks
R1	8+58, L & 9+55, L	2						
R2	8+90, L to 8+87(M), R			265				
R3	8+00 (M) to 9+85, L & R					1390		
R4	9+60 (M), L & R	2			43			
R5	10+17 to 10+77, R			1	60			
R6	10+15, L & R					6185		
R7	8+00 to 9+83, L & R					925		
R8	8+30 to 9+42, R				302			
R9	9+03, R & 10+55 (M), L	2	1					
R10	10+85 (M) to 12+00 (M), L & R					730		
R11	11+43 (M), L to 11+93, R							
R12	12+05, R	1						
R13	8+85 (M), R						2	
R14	8+00 (M) to 12+00 (M)					1644		
R15	8+89, L				185			
R16	12+94, L						1	
R17	11+25, L to 12+50, L						4	
<b>TOTAL</b>		<b>7</b>	<b>Lump 2</b>	<b>2211</b>	<b>288</b>	<b>9230</b>	<b>3</b>	<b>4</b>