

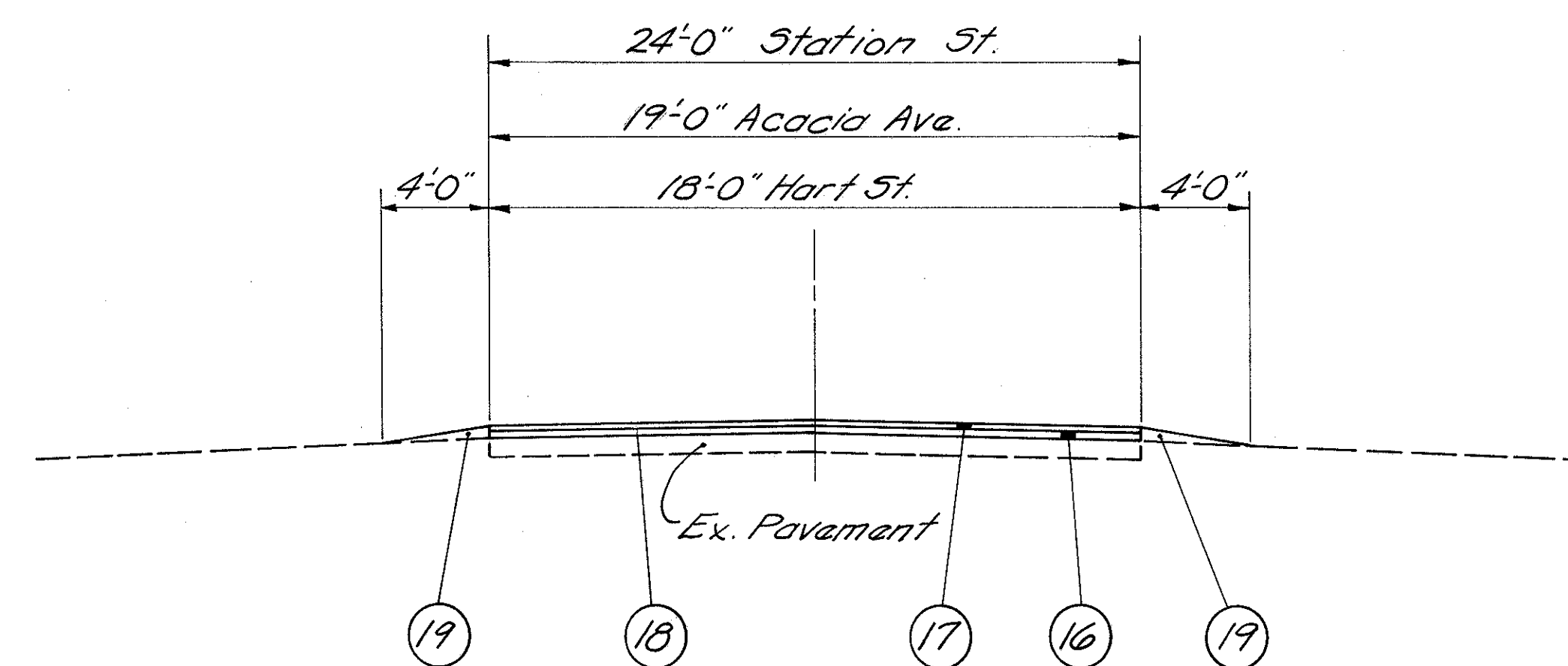
FED. RD. DIVISION	STATE	PROJECT
2	OHIO	

4-A
181

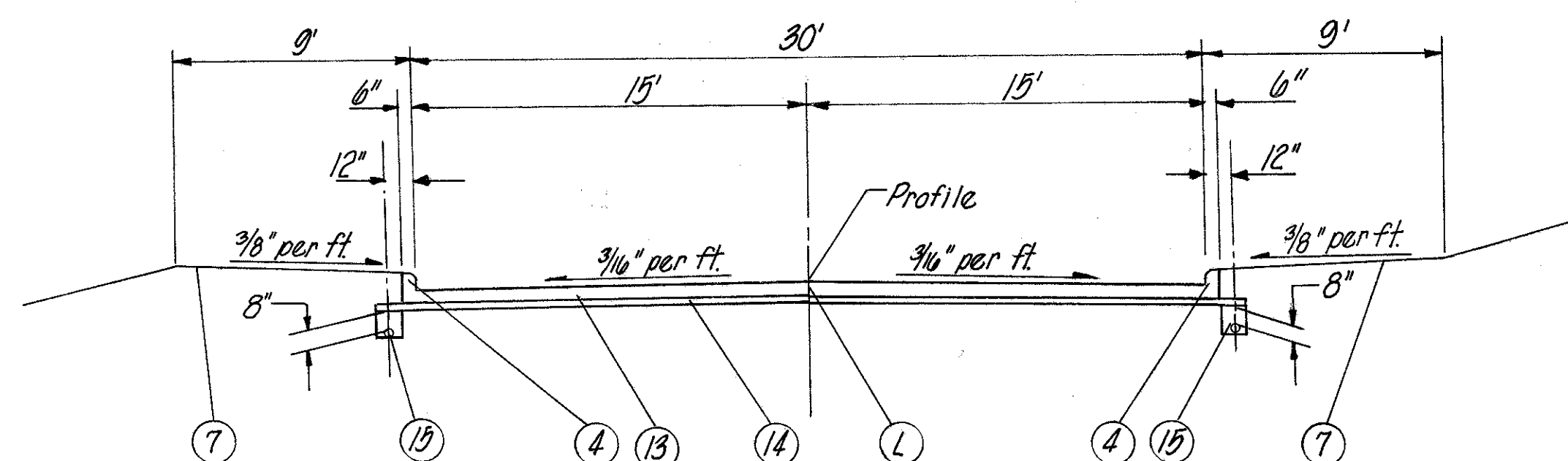
LAKE COUNTY
LAK-615-3.26

LEGEND

- ④ Item 609 Curb, Standard Type 2A
- ⑦ Item 659 Seeding and Mulching
- ⑬ Item 452 1" Plain Portland Cement Concrete Pavement
- ⑭ Item 310 5" Subbase, Grading A, as per plan
- ⑮ Item 605 4" Pipe Underdrain
- ⑯ Item 402 1 1/2" Asphalt Concrete (70-85 or AC 20)
- ⑰ Item 404 1" Asphalt Concrete (70-85 or AC 20)
- ⑱ Item 407 Tack Coat 702.04, MS-2 or RS-1; or 702.02, RC-70 or RC-250, applied at the rate of 0.10 gal. per sq. yd.
- ⑲ Item 411 Stabilized Crushed Aggregate
- Ⓛ Standard Longitudinal Joint



STATION ST.
ACACIA AVE.
HART ST.



SERVICE ROAD B STA. 0+29.50 to 2+29.67
SERVICE ROAD D STA. 6+10.76 to 14+74.37