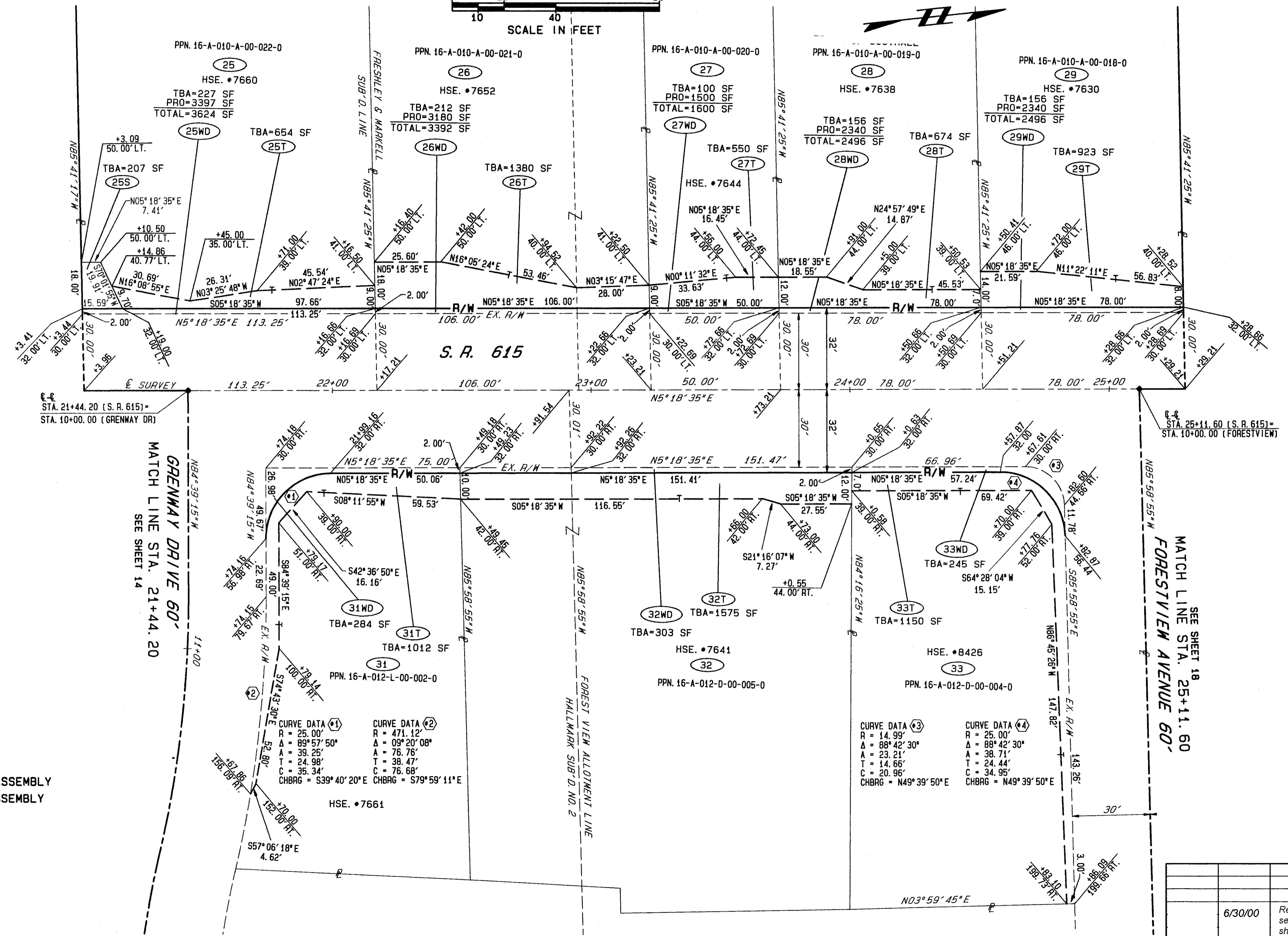
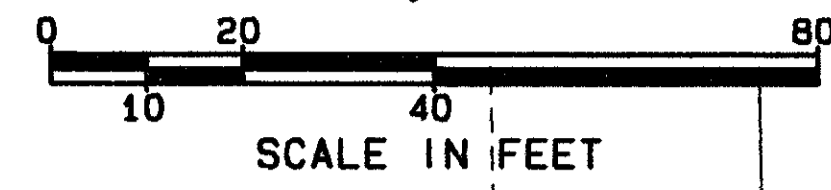


**LAKE COUNTY
CITY OF MENTOR
PART OF LOT 8&9, TRACT 3, LOT 7&9, TRACT 2, BACON & CHURCH LOTS
T=10N, R=9W**



LEGEND

◊ EXIST. MON. ASSEMBLY

◆ PROP. MON. ASSEMBLY

CURVE DATA (1)

R = 25.00'
Δ = 89°57'50"
A = 39.25'
T = 24.98'
C = 35.34'
CHBRG = S39°40'20"E

CURVE DATA (2)

R = 471.12'
Δ = 09°20'08"
A = 76.76'
T = 38.47'
C = 76.68'
CHBRG = S79°59'11"E

CURVE DATA (3)

R = 14.99'
Δ = 88°42'30"
A = 23.21'
T = 14.66'
C = 20.96'
CHBRG = N49°39'50"E

CURVE DATA (4)

R = 25.00'
Δ = 88°42'30"
A = 38.71'
T = 24.44'
C = 34.95'
CHBRG = N49°39'50"E

6/30/00		Removed ownership name list, see Property Map and Summary sheet for owner names.
REV	DATE	DESCRIPTION
DATE COMPLETED:		

90272 SUN 09/27/98 03:35 AM PAM FILES: RW4.PLT RW4B.PLT