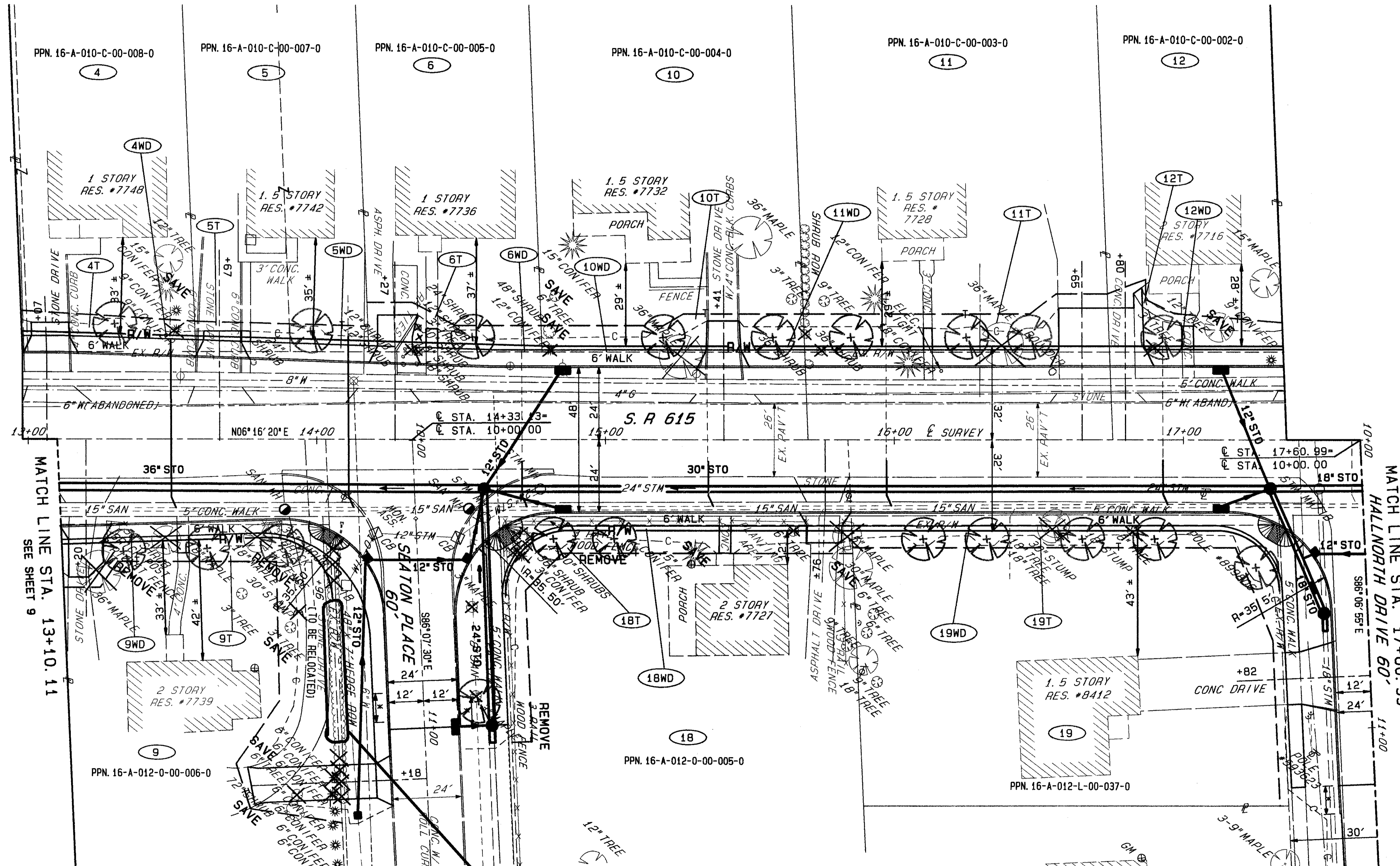
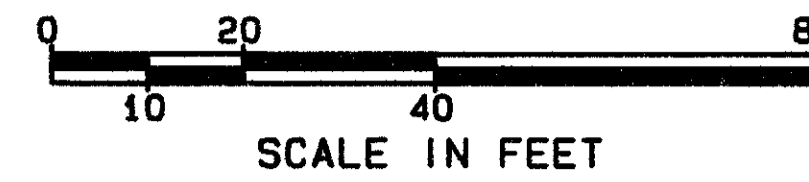


LAKE COUNTY
CITY OF MENTOR
PART OF LOT 8&9, TRACT 3, LOT 7&9, TRACT 2, BACON & CHURCH LOTS
T=10N, R=9W

CALC. BY		OHIO	186
DATE		FHWA REGION 5	199
CHKD. BY			
DATE			
PID NO. 9332		SUN 120880	
FED NO. STP-1A37()			
		11	
		24	



STRUCTURE KEY

	RESIDENTIAL
	COMMERCIAL

NOTE: BRICK POSTS TO BE REMOVED SHALL BE RELOCATED BEHIND THE RIGHT OF WAY LINE AT APPROX. STA. 13+12 AND 13+28, 39' RT. AS DIRECTED BY THE ENGINEER.

Do Not Disturb

MATCH LINE STA. 13+10.11
SEE SHEET 9

MATCH LINE STA. 17+60.99
SEE SHEET 13
HALLNORTH DRIVE 60'

RIGHT OF WAY PLANS STA. 13+10.11 TO STA. 17+60.99

REV	DATE	DESCRIPTION
	8/24/00	Added "Do Not Disturb" to a section of 7' Hedge
	6/30/00	Removed ownership name list, see Property Map and Summary sheet for owner names.
DATE COMPLETED:		

S0272 SUN 09/27/98 05:40 AM PAM FILES: RWPL2.PLT RWPL2B.PLT