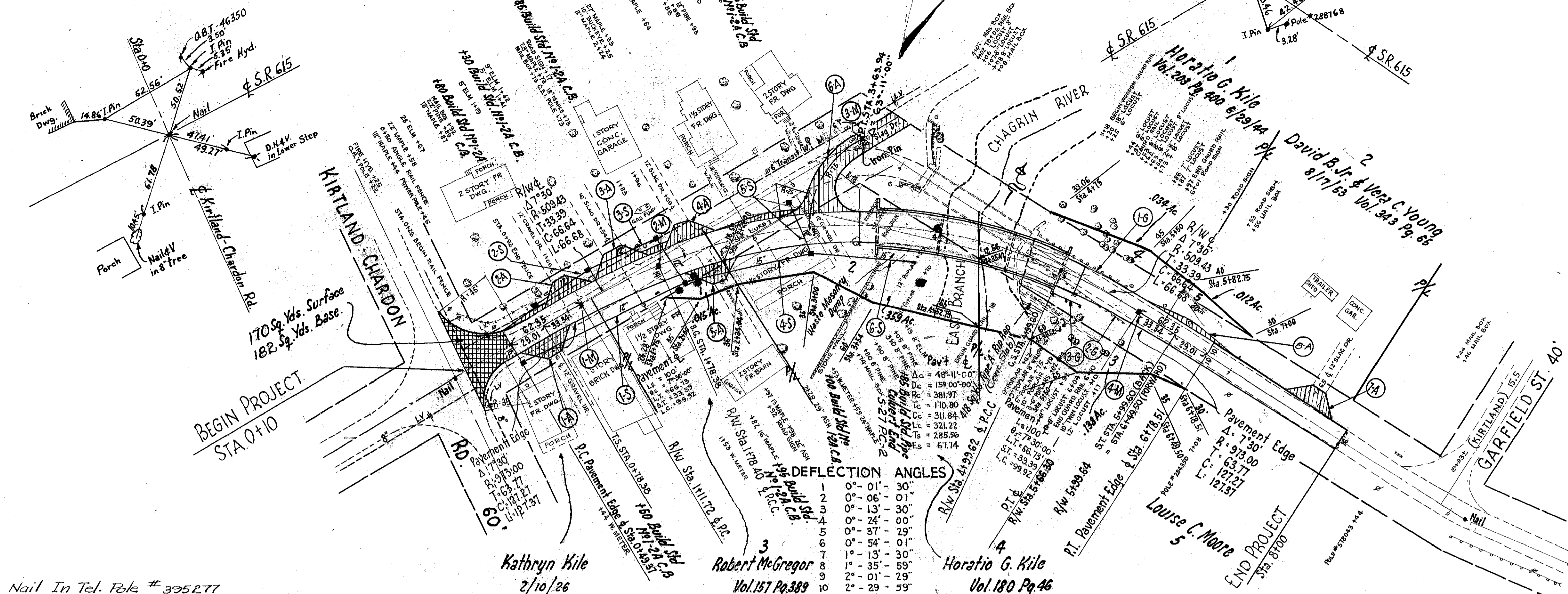
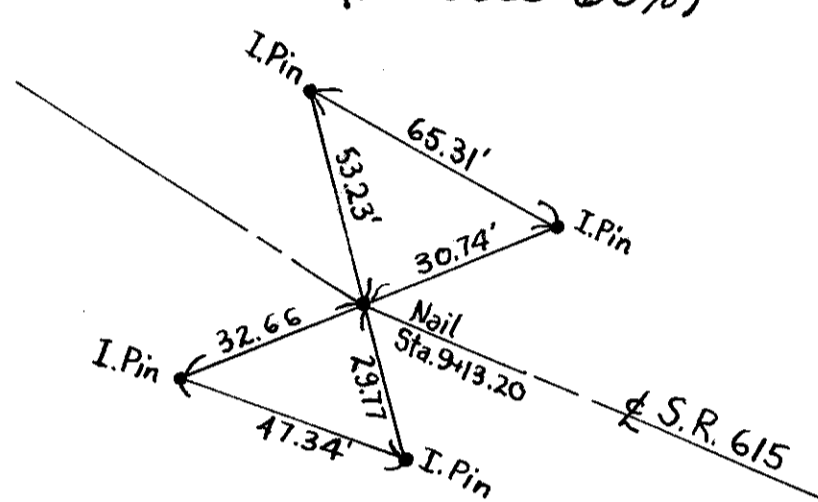


PROPOSED STRUCTURE
 TYPE: Continuous reinforced concrete slab with reinforced concrete substructure
 SPANS: 44'-55'-44' c/c brgs.
 ROADWAY: 28' ft of 1'-8" safety curbs
 LOAD FREQ. RATING: CF-130-51
 SKEW: None
 SURFACE COURSE: Bituminous
 ALIGNMENT: 15°00' Curve right
 SUPER ELEV: 3/4" per ft.
 APPROACH SLABS: AS-4-47
EXISTING BRIDGE DATA
 TYPE: Pratt truss
 SPAN: 96.0' clear
 ROADWAY: 15'-5 1/2"
 SKEW: None
 LOADING: H-4.2 (reduced 60%)



Nail In Tel. Pole # 395277
 Sta. 5+68 17' R. of C., Elev. 660.48

DRIVES						
Item No	Station	Side	Excavation		Width	
			Lor R	Cu. Yds.	Lim. Ft.	2" T-35
1-A	0+76	R	6.3	8	12	2.6
2-A	1+06	L	8.4	8	12	3.4
3-A	1+54	L	9.1	17	16	3.7
4-A	2+11	L	6.3	8	12	2.6
5-A	2+16	R	5.8	7	10	2.4
6-A	3+00	L	33.6	71	16	13.6
7-A	7+65	L	6.3	8	12	2.6
8-A	6+34	L	4.3			1.4
Total			80.1	127		32.3

* Mailbox turnout quantities combined with drives.

SEWERS							
Item No	Station		12" Pipe for Storm Sewer	12" Pipe for Utility Sewer	15" Pipe for Storm Sewer	Class 'E' Conc. for Culvert	Remarks
	From	To					
1-S	0+80	1+95	140				0+80
2-S	0+80	1+30	50				0+80
3-S	1+30	1+95	36	40			1+30, 1+85
4-S	1+95	3+00			100		1+95
5-S	2+85	3+00		42			2+85
6-S	3+00	3+85			85	.68	3+00, 3+85
Total			246	82	185	.68	7

* Payment for Excavation for the End Wall and Cradle shall be included in the unit price bid for Item 5-1. Concrete for structures Class 'E'.

REM. & DISP. OF EXIST. PAVEMENT.		
Station	Sq. Yds.	
From To		
0+10 3+10	1228	

TREES.
 12" - 2
 13" - 1
 16" - 1
 29" - 1
 Total - 5

MON. BOXES		
Item No	Station	Number
1-M	P.C. 1+11.72	1
2-M	P.C. 1+78.40	1
3-M	P.T. 3+63.94	1
4-M	P.T. 5+99.64	1
Total		4

GUARD RAIL				
Item No	Station	Side	Guard Rail	
			Rem. Disp. Existing	Guard Rail
1-G	4+75	L	29	
2-G	4+75	R	32	
3-G	5+00	L		25
Total			171	25

Excavation 1286 Cu. Yds.
 Embankment 463 Cu. Yds.
 Emb. +22% 565 Cu. Yds.

Seeding and Protecting 2701 Sq. Yds.
 Commercial Fertilizer (10-6-4)
 2701 Sq. Yds. x 9 = 24309 = 1000 - 24.31 x 30 = 729.30 Lbs. = 2000 = .36 Tons.

SUPERELEVATION TABLE		
Station	Left Edge Pavt.	Right Edge Pavt.
0+25	667.74	667.74
+50	667.24	667.20
+75	666.88	666.66
1+00	666.43	666.05
+25	666.05	665.33
+50	665.66	664.56
+75	665.24	663.85
2+00	664.74	663.25
+25	664.20	662.71
+50	663.66	662.17
+75	663.12	661.63
3+00	662.58	661.09
+25	662.04	660.55
+50	661.50	660.01
+75	660.96	659.47
4+00	660.42	658.92
+25	659.88	658.39
+50	659.34	657.85
+75	658.80	657.31
5+00	658.26	656.77
+25	657.67	656.35
+50	657.09	655.99
+75	656.50	655.74
6+00-6+50	655.91	655.54
+75	655.44	655.33
7+00	655.22	655.22