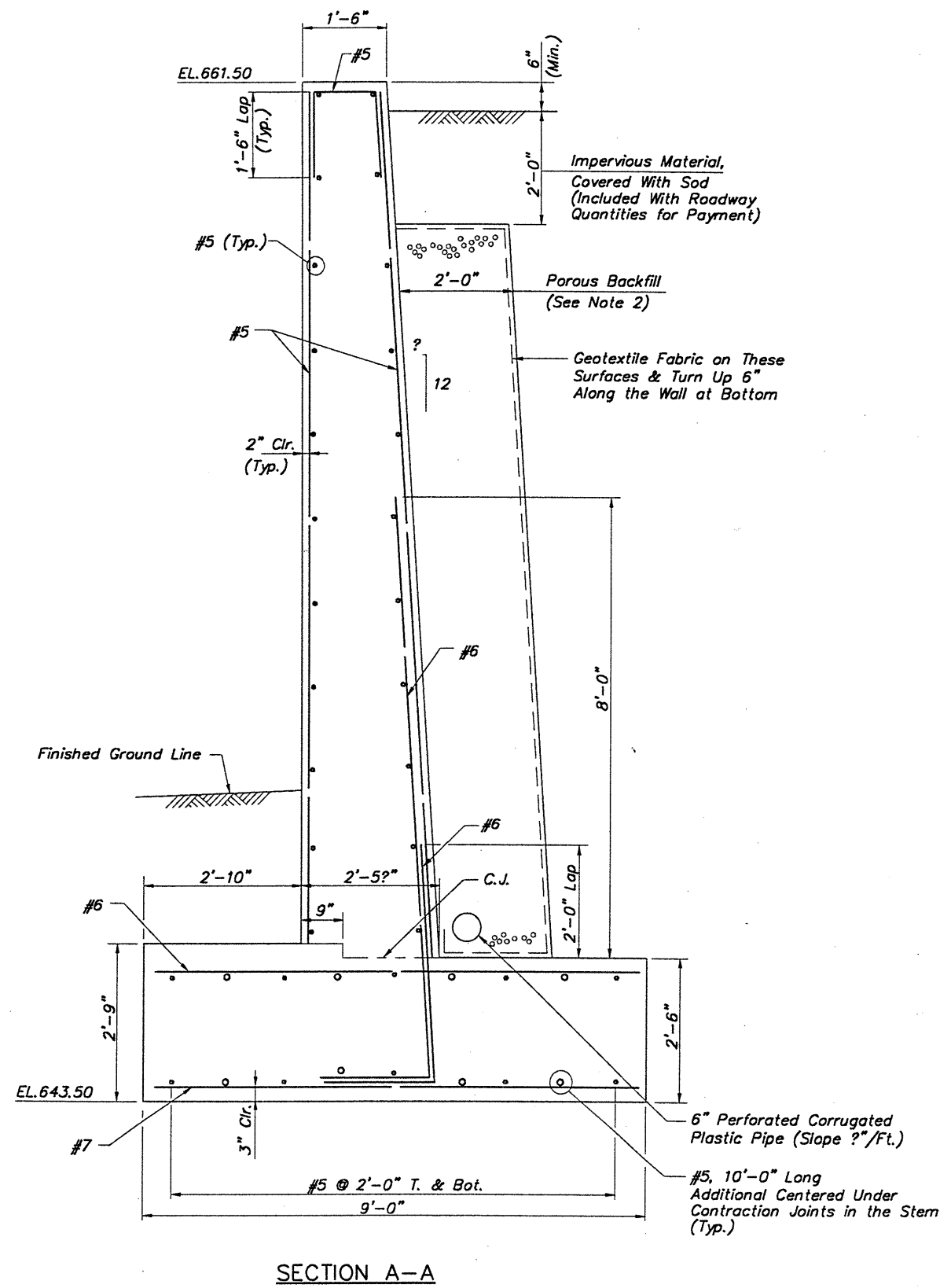
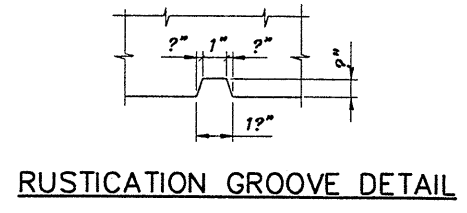


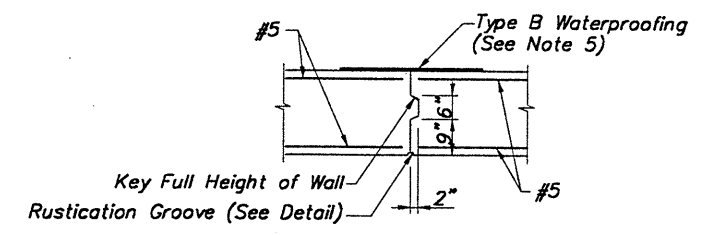
H:\CT\97260\CAD\97260R02.DWG PLOT SCALE 1:16



SECTION A-A



RUSTICATION GROOVE DETAIL

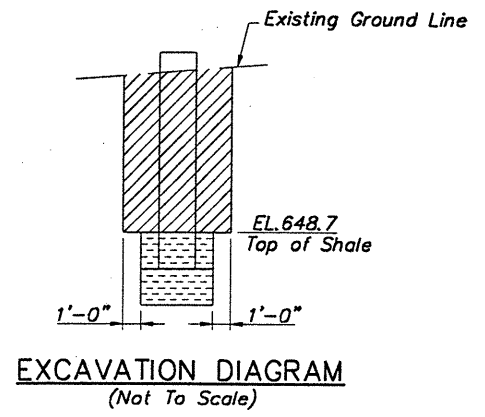


CONTRACTION JOINT DETAIL

CALC. BY: J.A.S. CHECKED BY: J.P.R.
DATE: 12/27/99 DATE: 12/30/99

| ESTIMATED QUANTITIES | | | | | | RETAINING WALL | AS PER PLAN REFERENCE SHEET NO. |
|----------------------|-----------|----------|----------|--|------|----------------|---------------------------------|
| ITEM | ITEM EXT. | TOTAL | UNIT | DESCRIPTION | | | |
| 503 | 11100 | Lump Sum | | Cofferdams, Cribbs and Sheeting | Lump | | |
| 503 | 21100 | 510 | Cu. Yd. | Unclassified Excavation | 510 | | |
| 503 | 31120 | 173 | Cu. Yd. | Shale Excavation | 173 | | |
| 511 | 46000 | 103 | Cu. Yd. | Class C Concrete | 103 | | |
| 511 | 46500 | 87 | Cu. Yd. | Class C Concrete, Footing | 87 | | |
| 512 | 44400 | 10 | Sq. Yd. | Type B Waterproofing | 10 | | |
| 518 | 21200 | 87 | Cu. Yd. | Porous Backfill With Filter Fabric | 87 | | |
| 518 | 40001 | 100 | Lin. Ft. | 6" Perforated Corrugated Plastic Pipe, As Per Plan | 100 | 1/2 | |

NOTES: 1. Epoxy Coated Reinforcing Steel, Grade 60 Shall be Incidental in the Price Bid for Structural Concrete.



EXCAVATION DIAGRAM
(Not To Scale)

LEGEND:
 - Indicates Area Included With Item 503- Unclassified Excavation.
 - Indicates Area Included With Item 503- Shale Excavation.

- NOTES:
- For Retaining Wall Plan and Elevation, See Sheet 1/2.
 - Porous Backfill With Filter Fabric, 2'-0" Thick, Shall Extend Up to Two Feet Below the Restored Ground Line and Laterally to the Ends of the Wall.

Geotextile Fabric Shall Conform With 712.09, Type A. The Bottom of Porous Backfill Shall be Sloped (2" Per Foot Minimum) Laterally to Drain. Geotextile Fabric is Included With Porous Backfill for Payment.
 - FOUNDATION BEARING PRESSURE: The Spread Footing, as Designed, Produces a Maximum Bearing Pressure of 1.3 Ton Per Square Foot. The Allowable Bearing Pressure is 5.0 Tons Per Square Foot.
 - THE FOOTING Shall be Placed in Bedrock at the Elevation Shown.
 - Type B Waterproofing Shall be 3'-0" Wide, Centered on the Joint from Top of Footing to 1'-0" Below Top of Wall.
 - The "General Notes" for Bridge No. LAK-615-0029 Shall Apply to This Retaining Wall.
 - NOTATION: C.J.-Construction Joint; EL.-Elevation; Typ.-Typical; Clr.-Clear; T.-Top; Bot.-Bottom; Min.-Minimum.