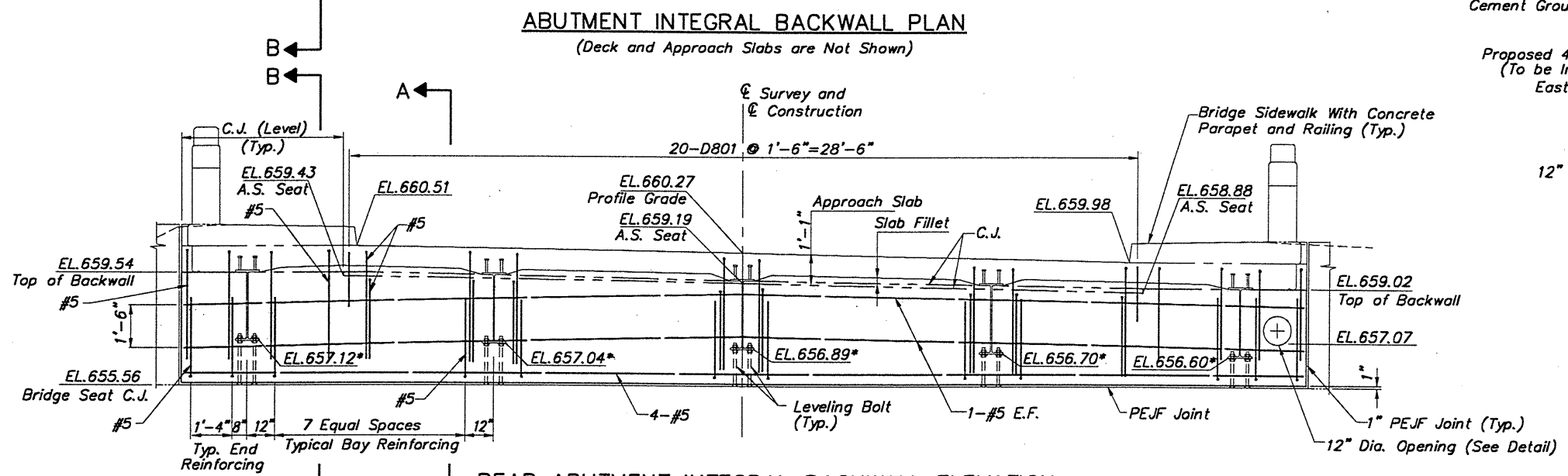
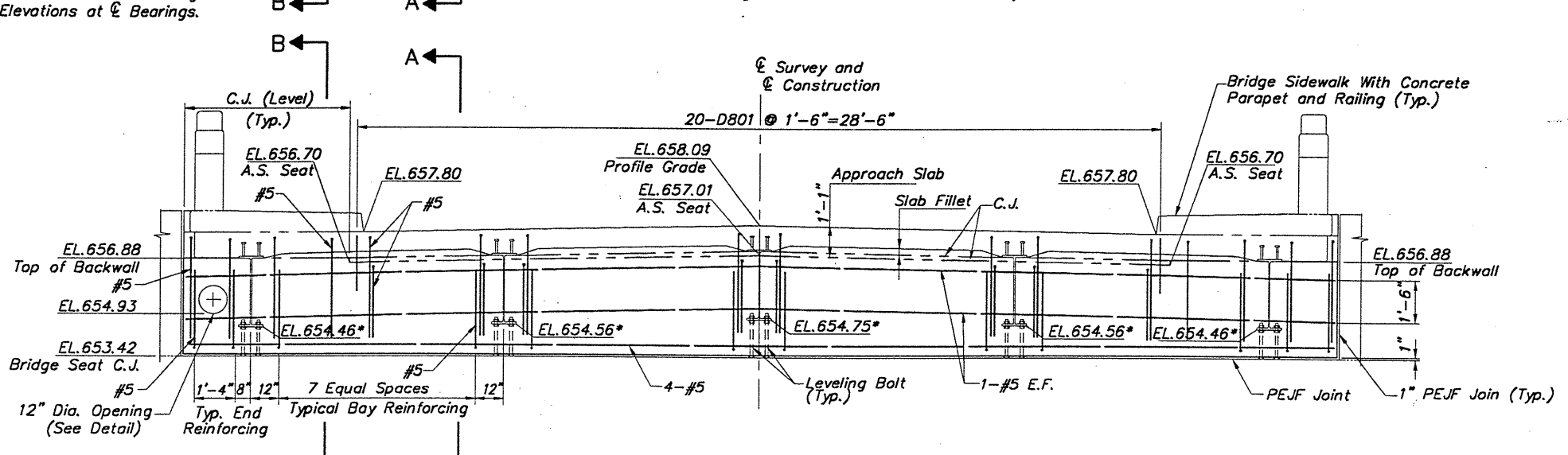


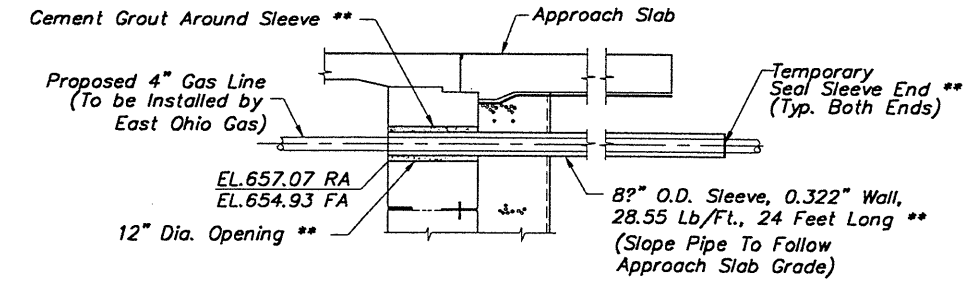
ABUTMENT INTEGRAL BACKWALL PLAN
(Deck and Approach Slabs are Not Shown)



REAR ABUTMENT INTEGRAL BACKWALL ELEVATION
(Deck & Sidewalk Reinforcing Steel and PEJF are Not Shown.)



FORWARD ABUTMENT INTEGRAL BACKWALL ELEVATION
(Deck & Sidewalk Reinforcing Steel and PEJF are Not Shown.)



** - To Be Included For Payment With Item 863-Structural Steel, Misc.: East Ohio Gas Line Support Brackets And 8" O.D. Steel Sleeve Pipes, 100% Paid by East Ohio Gas Company.

Note: 8" O.D. Sleeve To Be Furnished And Installed by the Bridge Contractor And To Be Paid By The East Ohio Gas Company To The City of Kirtland, Lake County, Ohio.

PIPE CASING DETAIL

- NOTES:**
1. Approach Slab Seat and Deck Slab Elevations are Shown at Bridge Limits.
 2. For Sections A-A and B-B, See Sheet 13/19.
 3. For Rear Abutment Plan and Elevation, See Sheet 5/19.
 4. For Forward Abutment Plan and Elevation, See Sheet 6/19.
 5. For Deck Reinforcing, See Transverse Section on Sheet 14/19. For Bridge Sidewalk with Concrete Parapet Reinforcing, See Sheet 16/19.
 6. INTEGRAL BACKWALL CONCRETE Shall Be Placed During Days When Sudden Temperature Changes Are Unlikely and Be Completed at Least 4 Hours Prior to The Concrete Placement Day's Peak Ambient Temperature.

INTEGRAL BACKWALL CONCRETE Encasing the Structural Member Sections Supported in an Integral Type Abutment Shall be Placed at Least 48 Hours Before the Actual Deck Concrete is Placed.

INTEGRAL BACKWALL Shall be Considered Part of the Superstructure, and It is Included With Superstructure Items For Payment.

7. NOTATION: C.J.-Construction Joint; EL.-Elevation; Typ.-Typical; FA-Forward Abutment; RA-Rear Abutment; Brg.-Bearing; Dia.-Diameter; PEJF-Preformed Expansion Joint Filler; A.S.-Approach Slab.

CT Consultants, Inc.
 Engineers - Architects - Planners
 12/31/99
 J.E.A. 12/31/99
 I.A.S. I.A.S.
 I.A.S. J.P.R.
INTEGRAL BACKWALL PLAN AND ELEVATIONS
 BRIDGE NO. LAK-615-0029
 OVER EAST BRANCH CHAGRIN RIVER
LAK-615-0.00
 12/19
 86
 95

H:\CT\97260\CAD\97260B10.DWG PLOT SCALE 1:32