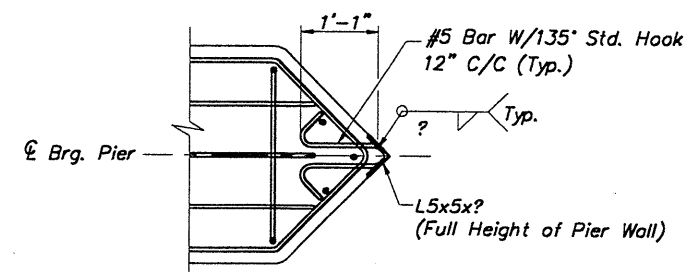
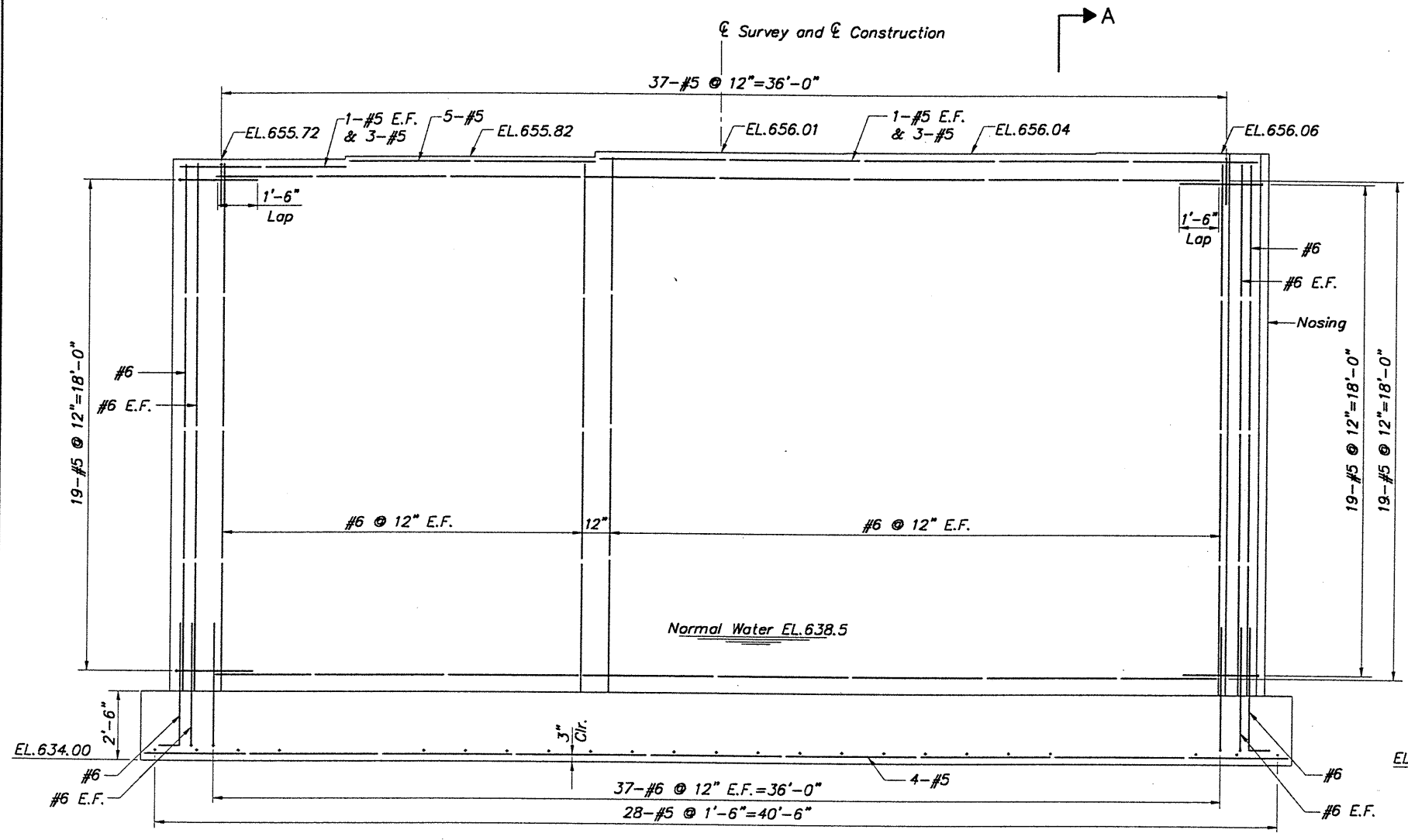


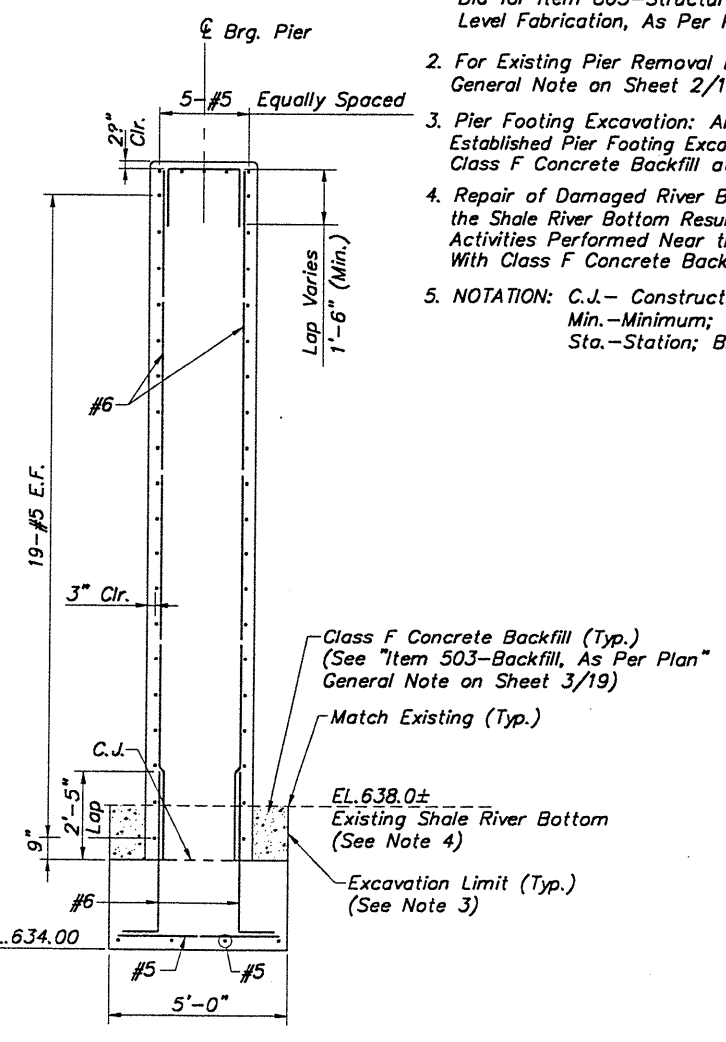
PIER 1 PLAN



PIER NOSING DETAIL



PIER 1 ELEVATION



SECTION A-A

- NOTES:
- Structural Steel Components for the Pier Nosing Shall be A36 Steel, Galvanized Per 711.02. Payment for Material, Fabrication and Installation Shall be Under the Lump Sum Bid for Item 863-Structural Steel Members, Miscellaneous Level Fabrication, As Per Plan.
 - For Existing Pier Removal Information, See Item 202 General Note on Sheet 2/19.
 - Pier Footing Excavation: Any Excavation Done Beyond the Established Pier Footing Excavation Limits Shall be Filled With Class F Concrete Backfill at the Contractor's Expense.
 - Repair of Damaged River Bottom: All Holes or Trenches in the Shale River Bottom Resulting From Construction or Removal Activities Performed Near the Pier Footing Shall be Filled With Class F Concrete Backfill at the Contractor's Expense.
 - NOTATION: C.J.- Construction Joint; EL.- Elevation; Min.-Minimum; Typ.-Typical; Clr.-Clear; Sta.-Station; Brg.-Bearing; E.F.-Each Face.

H:\CT\97260\CAD\97260B13.DWG PLOT SCALE 1:32

CT Consultants, Inc.
Engineers - Architects - Planners
10000 Highway 100, Suite 100, Dallas, Texas 75243

DATE	10/18/99
REVIEWED	J.E.A.
STRUCTURE FILE NUMBER	
DRAWN	R.L.B.
REVISOR	R.L.B.
DESIGNED	J.P.R.
CHECKED	I.A.S.

PIER 1 PLAN AND ELEVATION
BRIDGE NO. LAK-615-0029
OVER EAST BRANCH CHAGRIN RIVER

LAK-615-0.00

8 / 19

82
95