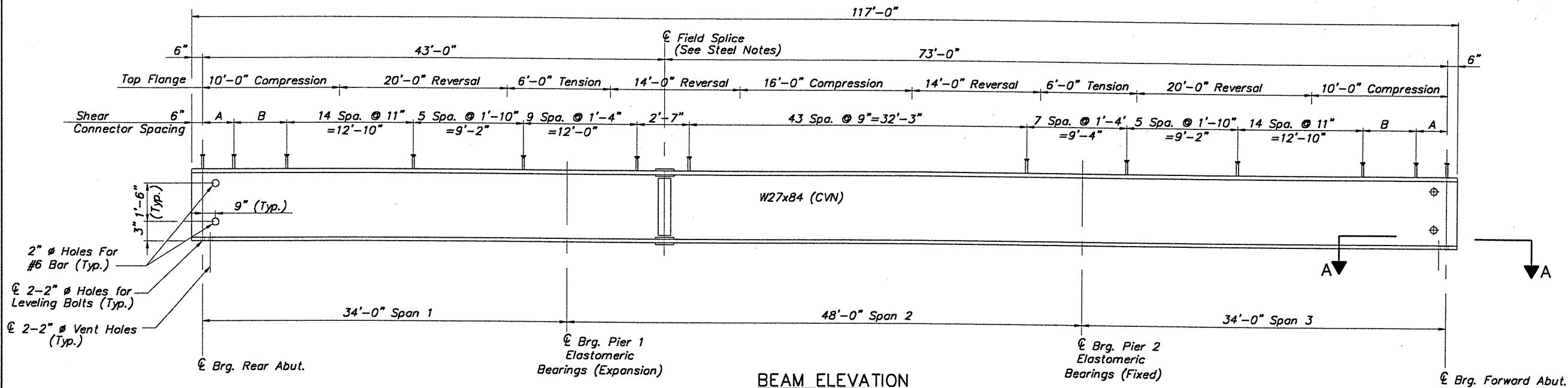
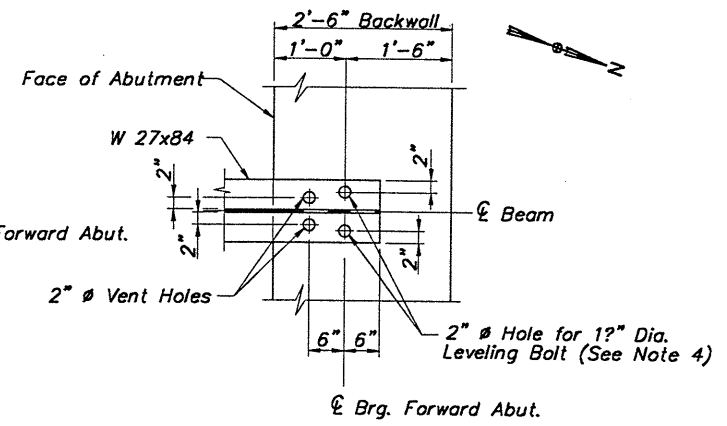


H:\CT\97260\CAD\97260B21.DWG PLOT SCALE 1:64



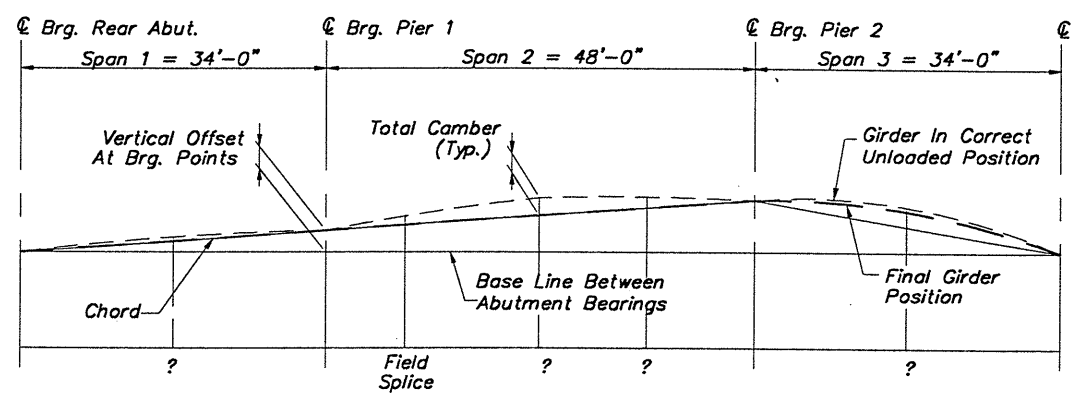
**BEAM ELEVATION**

A - 5 Spa. @ 7"=2'-11"  
 B - 6 Spa. @ 10"=5'-0"



**SECTION A-A**

(Forward Abutment as Shown, Rear Abutment Opposite Hand)



**CAMBER DIAGRAM**

Point	INTERIOR BEAMS					FASCIA BEAMS				
	Span 1		Span 2		Span 3	Span 1		Span 2		Span 3
	? Span	Field Splice	? Span	? Span	? Span	? Span	Field Splice	? Span	? Span	? Span
Deflection due to Weight of Steel	0	0	?	0	0	0	0	?	0	0
Deflection due to Remaining Dead Load	?	?	?	?	?	?	?	?	?	?
Adjustment Required for Vertical Curve	0	0	0	0	?	0	0	0	0	?
Required Shop Camber	?	?	?	?	?	?	?	?	?	?

NOTE: Deflections And Vertical Curve Adjustments Are Given To The Nearest ? Inch.

Vertical Offsets @ Bearing Points			
Rear Abut.	Pier 1	Pier 2	Forward Abut.
0	?"	1?"	0

**STEEL NOTES:**

ALL STRUCTURAL STEEL Shall be ASTM A588 Grade 50, Unless Noted Otherwise.  
 A588 STEEL is to be Left Unpainted. The Outside Surfaces and Bottom Surfaces of the Bottom Flanges of Fascia Beams Shall be Abrasively Blast Cleaned to SSPC-SP6 Commercial Blast in the Fabrication Shop. All A588 Steel Shall be Cleaned per Requirements of Supplemental Specification 863.30.

ALL FIELD SPLICES Shall Be Made With 1 1/2" High Strength Bolts Which Shall Conform To ASTM A325, Type III, Unless Noted Otherwise. For Field Splice Details and Notes, See ODOT Std. Dwg. BS-1-93 Sheets 1 and 3 of 3.

WHERE a Shape or Plate is Designed (CVN) the Material Shall Meet Specified Minimum Notch Toughness Requirements as Specified in 711.01.

WELDED ATTACHMENT of Supports for Concrete Deck Finishing Machine May Be Made to Areas of the Fascia Beam Top Flanges Designated "Compression". Attachments Shall Not Be Made To Areas Designated "Tension". Fillet Welds To Compression Flanges Shall Be Not Closer Than 1" From Edge of Flange, Be Not More Than 2" Long, And Be Not Smaller Than The Minimum Size Required By AASHTO.

**NOTES:**

- For Bridge Transverse Section See Sheet 14/16.
- For Steel Framing Plan, See Sheet 10/16.
- For Elastomeric Bearing Details, See Sheet 16/16.
- Leveling Bolts Shall be 1 1/2" Dia. (6"-7" UNC) With Two Nuts and Two 3"x3"x?" Washers Per Bolt. Contractor Shall Furnish Bolt Lengths According to Dimension A, and Providing 1" (Minimum) Thread Projection Above the Top Nut. For Dimension A, See Section A-A on Sheet 13/16. Payment for Labor, Materials and Installation Shall be Included in Item 863-Structural Steel, Misc.: 1 1/2" Dia. Bolts.
- Notation: Brg.-Bearing; Abut.-Abutment; Typ.-Typical; Pl-Plate; Spa.-Spaces; CVN-Charpy V Notch; E.F.-Each Face.

**CT Consultants, Inc.**  
 Engineers - Architects - Planners  
 12/30/99  
 J.E.A. 12/30/99  
 I.A.S. 12/30/99  
 I.A.S. 12/30/99  
 I.A.S. 12/30/99  
 J.P.R. 12/30/99  
 R.L.B. 12/30/99  
 J.P.R. 12/30/99  
**BEAM ELEVATION & DETAILS**  
 KIRTLAND-CHARDON ROAD BRIDGE  
 OVER EAST BRANCH CHAGRIN RIVER  
**LAK-615-0.00**  
 11 / 16  
 69  
 95