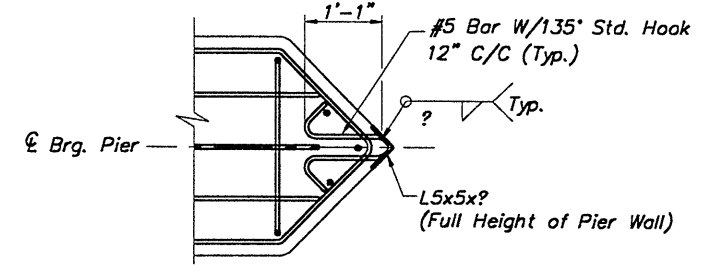
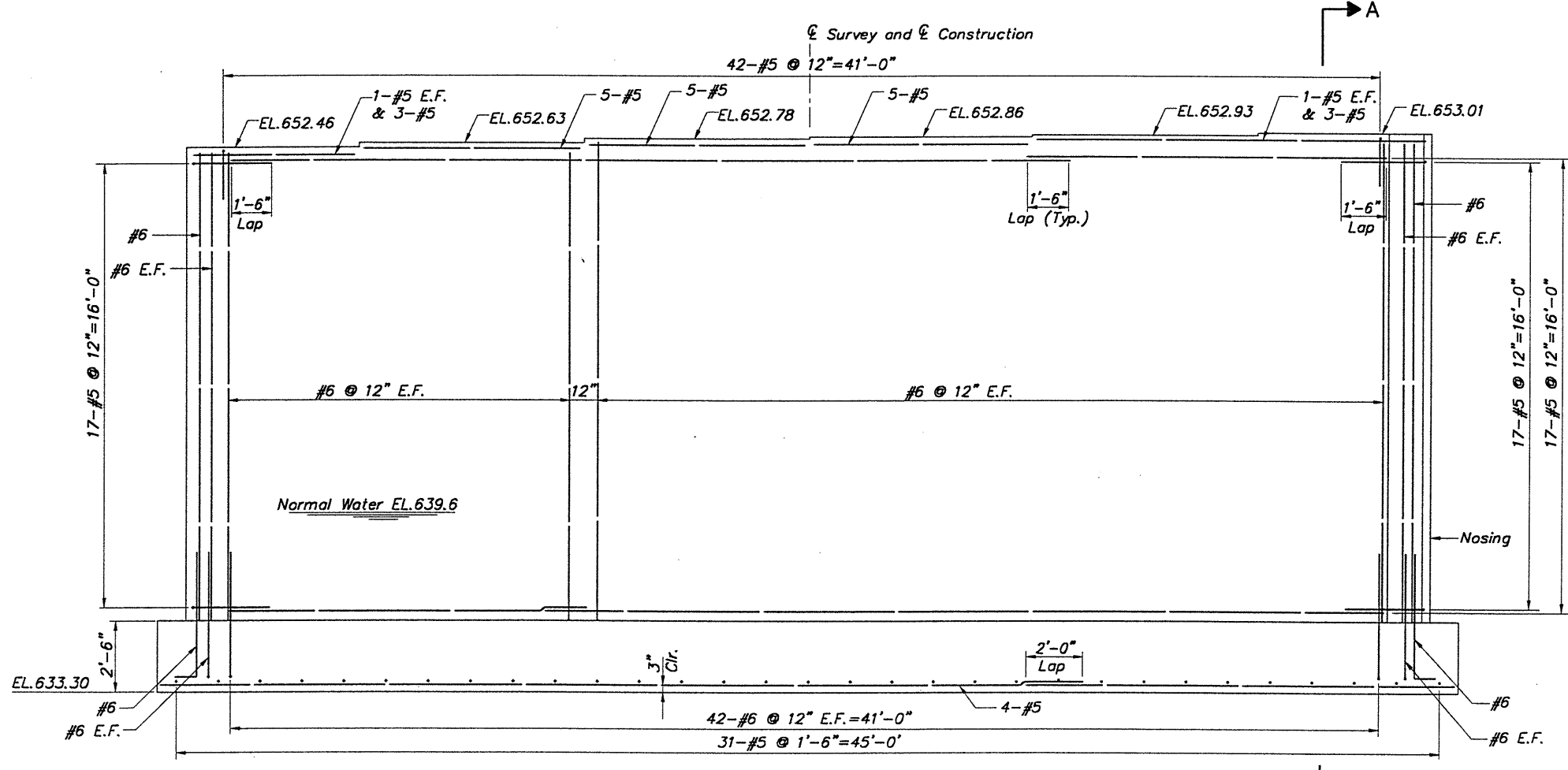


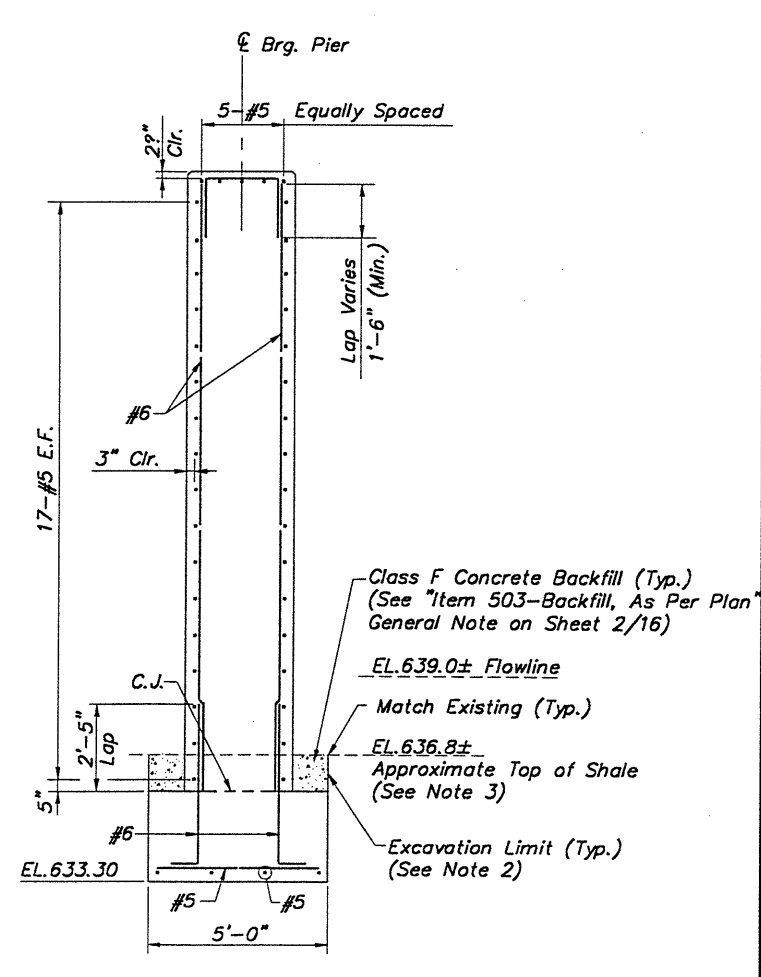
PIER 1 PLAN



PIER NOSING DETAIL



PIER 1 ELEVATION



SECTION A-A

NOTES:

1. Structural Steel Components for the Pier Nosing Shall be A36 Steel, Galvanized Per 711.02. Payment for Material, Fabrication and Installation Shall be Under the Lump Sum Bid for Item 863-Structural Steel Members, Miscellaneous Level Fabrication, As Per Plan.

2. Pier Footing Excavation: Any Excavation Done Beyond the Established Pier Footing Excavation Limits Shall be Filled With Class F Concrete Backfill at the Contractor's Expense.

3. Repair of Damaged River Bottom: All Holes or Trenches in the Shale River Bottom Resulting From Construction Activities Performed Near the Pier Footing Shall be Filled With Class F Concrete Backfill at the Contractor's Expense.

4. NOTATION: C.J.- Construction Joint; EL.- Elevation; Min.-Minimum; Typ.-Typical; Clr.-Clear; Sta.-Station; Brg.-Bearing; E.F.-Each Face.

H:\CT\97260\CAD\97260925.DWG PLOT SCALE 1:32

CT Consultants, Inc.
Engineers - Architects - Planners
STRUCTURE FILE NUMBER

DESIGNED	J.P.R.	CHECKED	I.A.S.
DRAWN	R.L.B.	REVIEWED	R.L.B.
REVIEWED	J.E.A.	DATE	12/30/99

PIER 1 PLAN AND ELEVATION
KIRTLAND CHARDON ROAD BRIDGE
OVER EAST BRANCH CHAGRIN RIVER

LAK-615-0.00

8 / 16

66
95